



SZABO SCANDIC

Part of Europa Biosite

Produktinformation



Forschungsprodukte & Biochemikalien



Zellkultur & Verbrauchsmaterial



Diagnostik & molekulare Diagnostik



Laborgeräte & Service

Weitere Information auf den folgenden Seiten!
See the following pages for more information!



Lieferung & Zahlungsart

siehe unsere [Liefer- und Versandbedingungen](#)

Zuschläge

- Mindermengenzuschlag
- Trockeneiszuschlag
- Gefahrgutzuschlag
- Expressversand

SZABO-SCANDIC HandelsgmbH

Quellenstraße 110, A-1100 Wien

T. +43(0)1 489 3961-0

F. +43(0)1 489 3961-7

mail@szabo-scandic.com

www.szabo-scandic.com

[linkedin.com/company/szaboscandic](https://www.linkedin.com/company/szaboscandic) 

Datasheet for 100-401-C87**NMDA R2B Antibody****Overview**

Description:	Anti-NMDA R2B (RABBIT) Antibody - 100-401-C87
Item No.:	100-401-C87
Size:	50 µL
Applications:	WB
Reactivity:	Human, Mouse, Rat
Host Species:	Rabbit

Product Details

Background:	NMDA R2B Antibody detects NMDA R2B protein. The NMDA receptor (NMDAR) plays an essential role in memory, neuronal development and it has also been implicated in several disorders of the central nervous system including Alzheimer's, epilepsy and ischemic neuronal cell death. The NMDA receptor is also one of the principal molecular targets for alcohol in the CNS. The NMDAR is also potentiated by protein phosphorylation. The rat NMDAR1 (NR1) was the first subunit of the NMDAR to be cloned. The NR1 protein can form NMDA activated channels when expressed in <i>Xenopus</i> oocytes but the currents in such channels are much smaller than those seen in situ. Channels with more physiological characteristics are produced when the NR1 subunit is combined with one or more of the NMDAR2 (NR2 A-D) subunits. Anti-NMDA R2B Antibody is ideal for investigators involved in Neuroscience, Signal Transduction, and Cell Signaling Research.
Synonyms:	Glutamate [NMDA] receptor subunit epsilon-2, N-methyl D-aspartate receptor subtype 2B, NMDAR2B, NR2B, Grin2b
Host Species:	Rabbit
Clonality:	Polyclonal
Format:	Antiserum

Target Details

Gene Name:	Grin2b
Reactivity:	Human, Mouse, Rat

Immunogen Type:	Recombinant Protein
Immunogen:	Anti-NMDA R2B Antibody was produced by repeated immunizations with a fusion protein from the C-terminal region of the NR2B subunit.
Purity/Specificity:	Anti-NMDA R2B antibody is directed against NMDA R2B protein. The antibody was prepared from monospecific neat serum. Anti-NMDA R2B antibodies are specific for the ~180kDa NR2B subunit of the NMDA receptor. Anti-NMDA R2B antibodies exhibit no reactivity towards the NR2A and NR2C subunits. Immunolabeling is blocked by pre-adsorption of antibody with the fusion protein used to generate the antibody. Reactivity is expected against mouse and human.
Relevant Links:	<ul style="list-style-type: none">• UniProtKB - Q00960• GenelD - 24410• UniProtKB - Q00960.1

Application Details

Tested Applications:	WB
Application Note:	Anti-NMDA R2B Antibody has been tested in Western Blotting. Expect a band of approximately 180kDa in size corresponding to the NR2B subunit of the NMDA receptor in appropriate cell lysate or extract. A dilution of 1:1000 is recommended in western blotting although specific conditions for reactivity should be optimized by the end user.
Assay Dilutions:	All assays should be optimized by the user. Recommended dilutions (if any) may be listed below.
WB:	1:1000

Formulation

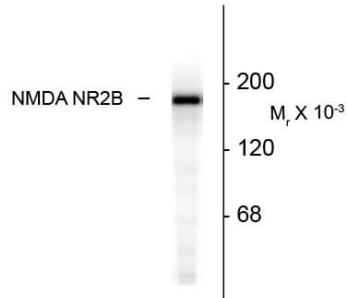
Physical State:	Liquid
Concentration:	Titred value sufficient to run approximately 10 mini blots.

Shipping & Handling

Shipping Condition:	Dry Ice
Storage Condition:	Store vial at -20° C prior to opening. This product is stable at 4° C as an undiluted liquid. For extended storage, aliquot contents and freeze at -20° C or below. Avoid cycles of freezing and thawing. Dilute only prior to immediate use.
Expiration:	Expiration date is one (1) year from date of receipt.

Images

Anti-NMDA Receptor, NR2B Subunit



Western blot of rat hippocampal lysate showing specific immunolabeling of the 180k NR2B subunit of the NMDA receptor.

Western Blot

Western Blot of Anti-NMDA R2B (Rabbit) Antibody. Lane 1: rat hippocampal lysate. Lane 2: none. Load: 10 µg per lane. Primary antibody: NMDA R2B antibody at 1:400 for overnight at 4°C. Secondary antibody: IRDye800™ rabbit secondary antibody at 1:10,000 for 45 min at RT. Block: 5% BLOTTO overnight at 4°C. Predicted/Observed size: ~180k, ~180k for NMDA receptor. Other band(s): none.

Disclaimer

This product is for research use only and is not intended for therapeutic or diagnostic applications. Please contact a technical service representative for more information. All products of animal origin manufactured by Rockland Immunochemicals are derived from starting materials of North American origin. Collection was performed in United States Department of Agriculture (USDA) inspected facilities and all materials have been inspected and certified to be free of disease and suitable for exportation. All properties listed are typical characteristics and are not specifications. All suggestions and data are offered in good faith but without guarantee as conditions and methods of use of our products are beyond our control. All claims must be made within 30 days following the date of delivery. The prospective user must determine the suitability of our materials before adopting them on a commercial scale. Suggested uses of our products are not recommendations to use our products in violation of any patent or as a license under any patent of Rockland Immunochemicals, Inc. If you require a commercial license to use this material and do not have one, then return this material, unopened to: Rockland Inc., P.O. BOX 5199, Limerick, Pennsylvania, USA.