



# SZABO SCANDIC

Part of Europa Biosite

## Produktinformation



Forschungsprodukte & Biochemikalien



Zellkultur & Verbrauchsmaterial



Diagnostik & molekulare Diagnostik



Laborgeräte & Service

Weitere Information auf den folgenden Seiten!  
See the following pages for more information!



### Lieferung & Zahlungsart

siehe unsere [Liefer- und Versandbedingungen](#)

### Zuschläge

- Mindermengenzuschlag
- Trockeneiszuschlag
- Gefahrgutzuschlag
- Expressversand

### SZABO-SCANDIC HandelsgmbH

Quellenstraße 110, A-1100 Wien

T. +43(0)1 489 3961-0

F. +43(0)1 489 3961-7

[mail@szabo-scandic.com](mailto:mail@szabo-scandic.com)

[www.szabo-scandic.com](http://www.szabo-scandic.com)

[linkedin.com/company/szaboscandic](https://www.linkedin.com/company/szaboscandic) 

**Datasheet for 100-401-C92****Synapsin I Antibody****Overview**

|                      |   |
|----------------------|---|
| <b>Description:</b>  | Anti-Synapsin I (RABBIT) Antibody - 100-401-C92 |
| <b>Item No.:</b>     | 100-401-C92                                     |
| <b>Size:</b>         | 50 µL   |
| <b>Applications:</b> | WB  |
| <b>Reactivity:</b>   | Human, Mouse, Rat, Bovine                       |
| <b>Host Species:</b> | Rabbit  |

**Product Details**

|                      |   |
|----------------------|---|
| <b>Background:</b>   | Synapsin I plays a key role in synaptic plasticity in the brain (Feng et al., 2002; Nayak et al., 1996). This effect is due in large part to the ability of the synapsins to regulate the availability of synaptic vesicles for release. In addition to its role in plasticity, the expression of synapsin I is a precise indicator of synapse formation. Thus, Synapsin I immunocytochemistry provides a valuable tool for the study of synaptogenesis. The role of synapsin in synaptic plasticity and in synaptogenesis is regulated by phosphorylation. Anti-Synapsin I Antibody is ideal for investigators involved in Cell Signaling, Neuroscience, Signal Transduction research. |
| <b>Synonyms:</b>     | Synapsin I, SYN1  |
| <b>Host Species:</b> | Rabbit  |
| <b>Clonality:</b>    | Polyclonal  |
| <b>Format:</b>       | Antiserum   |

**Target Details**

|                        |   |
|------------------------|---|
| <b>Gene Name:</b>      | SYN1  |
| <b>Reactivity:</b>     | Human, Mouse, Rat, Bovine   |
| <b>Immunogen Type:</b> | Native Protein  |
| <b>Immunogen:</b>      | Anti-Synapsin I Antibody was produced in rabbit by repeated immunizations with native bovine synapsin I protein purified from bovine brain. |

**Purity/Specificity:** Anti-Synapsin I antibody was prepared from monospecific neat serum. This antibody is directed against bovine synapsin I. Anti-Synapsin I is specific for the ~78kDa synapsin I protein doublet. Immunolabeling blocked by preadsorption of the antibody with the protein used to generate the antibody. Reactivity is reported against human, mouse and rat.

**Relevant Links:**

- [UniProtKB - P17599](#)
- [GeneID - 281510](#)

## Application Details

**Tested Applications:** WB

**Application Note:** Anti-Synapsin I antibody has been tested in Western Blotting. Expect ~78kDa. Specific conditions for reactivity should be optimized by the end user.

**Assay Dilutions:** All assays should be optimized by the user. Recommended dilutions (if any) may be listed below.

**WB:** 1:1000

## Formulation

**Physical State:** Liquid

**Concentration:** Titrated value sufficient to run approximately 10 mini blots.

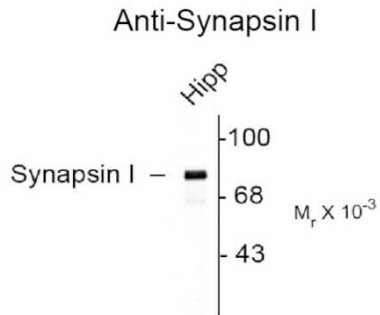
## Shipping & Handling

**Shipping Condition:** Dry Ice

**Storage Condition:** Store vial at -20° C prior to opening. This product is stable at 4° C as an undiluted liquid. For extended storage, aliquot contents and freeze at -20° C or below. Avoid cycles of freezing and thawing. Dilute only prior to immediate use.

**Expiration:** Expiration date is one (1) year from date of receipt.

## Images



Western blot of rat hippocampal (Hipp) lysate showing specific immunolabeling of the ~78k synapsin I doublet protein.

#### Western Blot

Western Blot of Anti-Synapsin I (Rabbit) Antibody. Lane 1: rat hippocampal lysate. Lane 2: none. Load: 10  $\mu$ g per lane. Primary antibody: Synapsin I antibody at 1:400 for overnight at 4°C. Secondary antibody: IRDye800™ rabbit secondary antibody at 1:10,000 for 45 min at RT. Block: 5% BLOTTO overnight at 4°C. Predicted/Observed size: ~78k, ~78k for synapsin I doublet protein. Other band(s): none.

## Disclaimer

This product is for research use only and is not intended for therapeutic or diagnostic applications. Please contact a technical service representative for more information. All products of animal origin manufactured by Rockland Immunochemicals are derived from starting materials of North American origin. Collection was performed in United States Department of Agriculture (USDA) inspected facilities and all materials have been inspected and certified to be free of disease and suitable for exportation. All properties listed are typical characteristics and are not specifications. All suggestions and data are offered in good faith but without guarantee as conditions and methods of use of our products are beyond our control. All claims must be made within 30 days following the date of delivery. The prospective user must determine the suitability of our materials before adopting them on a commercial scale. Suggested uses of our products are not recommendations to use our products in violation of any patent or as a license under any patent of Rockland Immunochemicals, Inc. If you require a commercial license to use this material and do not have one, then return this material, unopened to: Rockland Inc., P.O. BOX 5199, Limerick, Pennsylvania, USA.