



SZABO SCANDIC

Part of Europa Biosite

Produktinformation



Forschungsprodukte & Biochemikalien



Zellkultur & Verbrauchsmaterial



Diagnostik & molekulare Diagnostik



Laborgeräte & Service

Weitere Information auf den folgenden Seiten!
See the following pages for more information!



Lieferung & Zahlungsart

siehe unsere [Liefer- und Versandbedingungen](#)

Zuschläge

- Mindermengenzuschlag
- Trockeneiszuschlag
- Gefahrgutzuschlag
- Expressversand

SZABO-SCANDIC HandelsgmbH

Quellenstraße 110, A-1100 Wien

T. +43(0)1 489 3961-0

F. +43(0)1 489 3961-7

mail@szabo-scandic.com

www.szabo-scandic.com

[linkedin.com/company/szaboscandic](https://www.linkedin.com/company/szaboscandic) 

Datasheet for 100-401-D16

ChAT (Choline Acetyltransferase) Antibody

Overview

Description:	Anti-ChAT (Choline Acetyltransferase) (RABBIT) Antibody - 100-401-D16
Item No.:	100-401-D16
Size:	100 µL
Applications:	IHC, WB
Reactivity:	Mouse, Rat, Non-Human Primates
Host Species:	Rabbit

Product Details

Background:	ChAT antibody recognizes choline acetyltransferase which is a neuronal enzyme which catalyzes the reaction between Acetyl CoA and choline resulting in the formation of acetylcholine. ChAT is found primarily in cholinergic neurons making it a valuable marker for diseases associated with decreased cholinergic function such as Schizophrenia, Alzheimer disease (AD) and Down syndrome. Decreased choline acetyltransferase activity in particular has been shown in Schizophrenic subjects. It has furthermore been demonstrated that in patients with AD, there are significantly lower levels of cortical ChAT that correlate with severity of the disease as measured by loss of neuropsychological function. Anti-ChAT antibody is ideal for investigators involved in Cell Signaling, Neuroscience, Signal Transduction research.
Synonyms:	acetyl CoA:choline O-acetyltransferase, CHAT, CHOACTase, Choline acetylase, choline acetyltransferase, Choline O-acetyltransferase, CLAT, CMS1A, CMS1A2
Host Species:	Rabbit
Clonality:	Polyclonal
Format:	Antiserum

Target Details

Gene Name:	CHAT
Reactivity:	Mouse, Rat, Non-Human Primates
Immunogen Type:	Native Protein

Immunogen:	Anti-ChAT Antibody was produced in rabbit by repeated immunizations with native choline acetyltransferase purified from human placenta
Purity/Specificity:	Anti-ChAT antibody is neat antiserum prepared from monospecific antiserum by delipidation and defibrination. Reactivity against ChAT occurs from human sources. However, reactivity is also expected against mouse, rat and non-human primates.
Relevant Links:	<ul style="list-style-type: none">• UniProtKB - P28329• GeneID - 1103• UniProtKB - P28329.4

Application Details

Tested Applications:	IHC, WB
Application Note:	Anti-ChAT antibody has been tested in western blot and IHC and is suitable for use in ELISA. Specific conditions for reactivity should be optimized by the end user. Expect a ~ 68/70 kDa band corresponding to choline acetyltransferase protein by Western Blot in the appropriate lysate or tissue.
Assay Dilutions:	All assays should be optimized by the user. Recommended dilutions (if any) may be listed below.
IHC:	1:100
WB:	1:1000

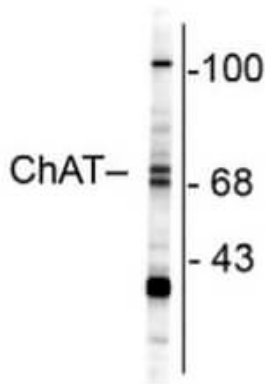
Formulation

Physical State:	Liquid
Concentration:	Titred value sufficient to run approximately 10 mini blots.
Buffer:	None

Shipping & Handling

Shipping Condition:	Dry Ice
Storage Condition:	Store vial at -20° C prior to opening. This product is stable at 4° C as an undiluted liquid. For extended storage, aliquot contents and freeze at -20° C or below. Avoid cycles of freezing and thawing. Dilute only prior to immediate use.
Expiration:	Expiration date is one (1) year from date of receipt.

Images



Western Blot

Western Blot of Rabbit Anti-ChAT antibody. Lane 1: rat brain. Lane 2: none. Load: 10 µg per lane. Primary antibody: Choline Acetyltransferase antibody at 1:1000 for overnight at 4°C. Secondary antibody: IRDye800™ rabbit secondary antibody at 1:10,000 for 45 min at RT. Block: 5% BLOTTO overnight at 4°C. Predicted/Observed size: ~68/70k, ~68/70k for choline acetyltransferase protein. Other band(s): ChAT splice variants and isoforms.

Disclaimer

This product is for research use only and is not intended for therapeutic or diagnostic applications. Please contact a technical service representative for more information. All products of animal origin manufactured by Rockland Immunochemicals are derived from starting materials of North American origin. Collection was performed in United States Department of Agriculture (USDA) inspected facilities and all materials have been inspected and certified to be free of disease and suitable for exportation. All properties listed are typical characteristics and are not specifications. All suggestions and data are offered in good faith but without guarantee as conditions and methods of use of our products are beyond our control. All claims must be made within 30 days following the date of delivery. The prospective user must determine the suitability of our materials before adopting them on a commercial scale. Suggested uses of our products are not recommendations to use our products in violation of any patent or as a license under any patent of Rockland Immunochemicals, Inc. If you require a commercial license to use this material and do not have one, then return this material, unopened to: Rockland Inc., P.O. BOX 5199, Limerick, Pennsylvania, USA.