



SZABO SCANDIC

Part of Europa Biosite

Produktinformation



Forschungsprodukte & Biochemikalien



Zellkultur & Verbrauchsmaterial



Diagnostik & molekulare Diagnostik



Laborgeräte & Service

Weitere Information auf den folgenden Seiten!
See the following pages for more information!



Lieferung & Zahlungsart

siehe unsere [Liefer- und Versandbedingungen](#)

Zuschläge

- Mindermengenzuschlag
- Trockeneiszuschlag
- Gefahrgutzuschlag
- Expressversand

SZABO-SCANDIC HandelsgmbH

Quellenstraße 110, A-1100 Wien

T. +43(0)1 489 3961-0

F. +43(0)1 489 3961-7

mail@szabo-scandic.com

www.szabo-scandic.com

[linkedin.com/company/szaboscandic](https://www.linkedin.com/company/szaboscandic) 

Datasheet for 100-401-D21**CNPase Antibody****Overview**

Description:	Anti-CNP (2,3-cyclic nucleotide-3-phosphodiesterase) (RABBIT) Antibody - 100-401-D21
Item No.:	100-401-D21
Size:	50 µL
Applications:	IHC, WB
Reactivity:	Human, Mouse, Rat, Rabbit, Sheep
Host Species:	Rabbit

Product Details

Background:	CNP antibody recognizes CNP or 2,3-cyclic nucleotide-3-phosphodiesterase which is a membrane bound, microtubule associated protein that is among the most abundant myelin proteins of the CNS. It is thought that CNP may serve as a regulator of tubulin polymerization and of microtubule distribution. It was recently found that CNP may also function as a possible linker protein anchoring microtubules to the plasma membrane via a 13 residue C-terminal CNP fragment. Anti-CNP antibody is ideal for investigators involved in Cell Signaling, Neuroscience, Signal Transduction research.
Synonyms:	CNPase
Host Species:	Rabbit
Clonality:	Polyclonal
Format:	Antiserum

Target Details

Gene Name:	CNP
Reactivity:	Human, Mouse, Rat, Rabbit, Sheep
Immunogen Type:	Native Protein
Immunogen:	Anti-CNP Antibody was produced in rabbit by repeated immunizations with endogenous rabbit 2,3 cyclic nucleotide-3-phospho-diesterase

Purity/Specificity: Anti-CNP antibody is directed against rabbit CNP. was prepared as neat antiserum by delipdation and defibrination from monospecific antiserum. Anti-CNP antibody recognizes CNP from rabbit, mouse, human, rat and sheep sources. Cross reactivity with CNP from other species has not been determined.

Relevant Links:

- [UniProtKB - G1T512](#)

Application Details

Tested Applications: IHC, WB

Application Note: Anti-CNP has been tested in western blot and IHC and is suitable for usage in ELISA. Specific conditions for reactivity should be optimized by the end user. Expect a 46kDa band by western blot corresponding to CNP protein in the appropriate cell lysate of tissue.

Assay Dilutions: All assays should be optimized by the user. Recommended dilutions (if any) may be listed below.

ELISA: 1:10,000

IHC: 1:1000

WB: 1:1000

Formulation

Physical State: Liquid

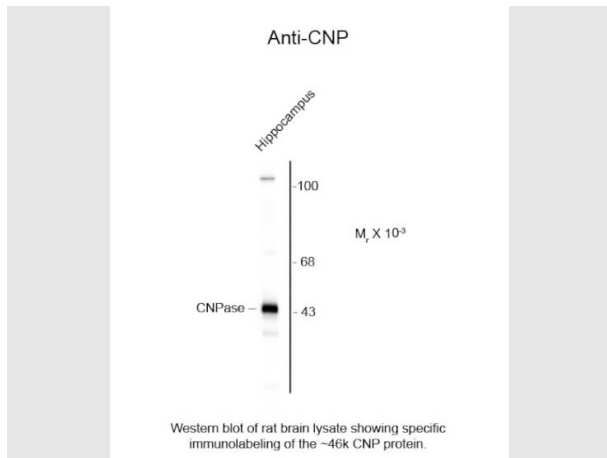
Shipping & Handling

Shipping Condition: Dry Ice

Storage Condition: Store vial at -20° C prior to opening. This product is stable at 4° C as an undiluted liquid. For extended storage, aliquot contents and freeze at -20° C or below. Avoid cycles of freezing and thawing. Dilute only prior to immediate use.

Expiration: Expiration date is one (1) year from date of receipt.

Images



Western Blot

Western Blot of Rabbit Anti-CNP (2,3-cyclic nucleotide-3-phosphodiesterase) (Rabbit) Antibody. Lane 1: rat brain lysate. Lane 2: none. Load: 10 µg per lane. Primary antibody: CNP antibody at 1:1000 for overnight at 4°C. Secondary antibody: IRDye800™ rabbit secondary antibody at 1:10,000 for 45 min at RT. Block: 5% BLOTTO overnight at 4°C. Predicted/Observed size: ~ 46k, ~ 46k for CNP protein. Other band(s): none.

References

- Megumi HI. et al. Trophic factors are essential for the survival of grafted oligodendrocyte progenitors and for neuroprotection after perinatal excitotoxicity. *Neural Regeneration Research* (2020)

Disclaimer

This product is for research use only and is not intended for therapeutic or diagnostic applications. Please contact a technical service representative for more information. All products of animal origin manufactured by Rockland Immunochemicals are derived from starting materials of North American origin. Collection was performed in United States Department of Agriculture (USDA) inspected facilities and all materials have been inspected and certified to be free of disease and suitable for exportation. All properties listed are typical characteristics and are not specifications. All suggestions and data are offered in good faith but without guarantee as conditions and methods of use of our products are beyond our control. All claims must be made within 30 days following the date of delivery. The prospective user must determine the suitability of our materials before adopting them on a commercial scale. Suggested uses of our products are not recommendations to use our products in violation of any patent or as a license under any patent of Rockland Immunochemicals, Inc. If you require a commercial license to use this material and do not have one, then return this material, unopened to: Rockland Inc., P.O. BOX 5199, Limerick, Pennsylvania, USA.