



# SZABO SCANDIC

Part of Europa Biosite

## Produktinformation



Forschungsprodukte & Biochemikalien



Zellkultur & Verbrauchsmaterial



Diagnostik & molekulare Diagnostik



Laborgeräte & Service

Weitere Information auf den folgenden Seiten!  
See the following pages for more information!



### Lieferung & Zahlungsart

siehe unsere [Liefer- und Versandbedingungen](#)

### Zuschläge

- Mindermengenzuschlag
- Trockeneiszuschlag
- Gefahrgutzuschlag
- Expressversand

### SZABO-SCANDIC HandelsgmbH

Quellenstraße 110, A-1100 Wien

T. +43(0)1 489 3961-0

F. +43(0)1 489 3961-7

[mail@szabo-scandic.com](mailto:mail@szabo-scandic.com)

[www.szabo-scandic.com](http://www.szabo-scandic.com)

[linkedin.com/company/szaboscandic](https://www.linkedin.com/company/szaboscandic) 

**Datasheet for 100-401-D29****DsbA-L Antibody****Overview**

<b>Description:</b>	Anti-DsbA-L (Disulfide-bond-A oxidoreductase-like protein) (RABBIT) Antibody - 100-401-D29
<b>Item No.:</b>	100-401-D29
<b>Size:</b>	100 µL
<b>Applications:</b>	IHC, WB
<b>Reactivity:</b>	Human, Mouse
<b>Host Species:</b>	Rabbit

**Product Details**

<b>Background:</b>	DsbA-L Antibody detects Disulfide-bond-A oxidoreductase-like protein (DsbA-L, previously named as GST Kappa) which is an adiponectin-interacting protein. DsbA-L is highly expressed in adipose tissue, and its expression level is negatively correlated with obesity in mice and humans. DsbA-L expression in 3T3-L1 adipocytes is stimulated by the insulin sensitizer rosiglitazone and inhibited by the inflammatory cytokine TNFalpha. Polymorphism of DsbA-L gene has recently been implicated in insulin secretion and body fat distribution. Overexpression of DsbA-L promotes adiponectin multimerization while suppressing DsbA-L expression by RNAi markedly and selectively reduces adiponectin levels and secretion in 3T3-L1 adipocytes. Recent studies identify DsbA-L as a key regulator for adiponectin biosynthesis. Anti-DsbA-L Antibody is ideal for investigators involved in Cell Signaling and Cell Metabolism.
<b>Synonyms:</b>	Glutathione S-transferase kappa 1, GST 13-13, GST class-kappa, GSTK1-1, Glutathione S-transferase subunit 13, Disulfide-bond-A oxidoreductase-like protein, DsbA-L
<b>Host Species:</b>	Rabbit
<b>Clonality:</b>	Polyclonal
<b>Format:</b>	Antiserum

**Target Details**

<b>Gene Name:</b>	Gstk1
<b>Reactivity:</b>	Human, Mouse
<b>Immunogen Type:</b>	Recombinant Protein

<b>Immunogen:</b>	Anti-DsbA-L Antibody was produced in rabbit by repeated immunizations with full length recombinant mouse DsbA-L protein
<b>Purity/Specificity:</b>	Anti-DsbA-L antibody is directed against DsbA-L. Anti-DsbA-L antibody is neat antiserum prepared from monospecific antiserum by delipidation and defibrination. Reactivity against DsbA-L occurs from mouse and human sources. Reactivity against DsbA-L from other sources is unknown.
<b>Relevant Links:</b>	<ul style="list-style-type: none"><li>• <a href="#">UniProtKB - Q9DCM2</a></li><li>• <a href="#">NCBI - NP_083831.1</a></li><li>• <a href="#">GeneID - 76263</a></li></ul>

## Application Details

<b>Tested Applications:</b>	IHC, WB
<b>Application Note:</b>	Anti-DsbA-L Antibody has been tested by western blot and IHC and is suitable for usage in ELISA. Specific conditions for reactivity should be optimized by the end user. It is suggested that you add 1% BSA to the antibody dilution buffer. Anti-DsbA-L is specific for the ~25 kDa DsbA-L protein in Western blots of 3T3-L1 adipocytes and mouse white and brown adipose tissue lysate samples.
<b>Assay Dilutions:</b>	All assays should be optimized by the user. Recommended dilutions (if any) may be listed below.
<b>ELISA:</b>	1:20,000
<b>IHC:</b>	1:200
<b>WB:</b>	1:2000

## Formulation

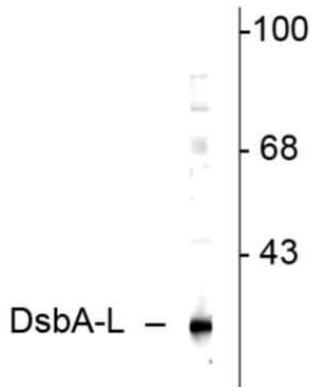
<b>Physical State:</b>	Liquid
<b>Concentration:</b>	Titred value sufficient to run approximately 10 mini blots.
<b>Stabilizer:</b>	40% (v/v) Glycerol

## Shipping & Handling

<b>Shipping Condition:</b>	Dry Ice
<b>Storage Condition:</b>	Store vial at -20° C prior to opening. This product is stable at 4° C as an undiluted liquid. For extended storage, aliquot contents and freeze at -20° C or below. Avoid cycles of freezing and thawing. Dilute only prior to immediate use.

**Expiration:** Expiration date is one (1) year from date of receipt.

## Images



### Western Blot

Western Blot of Rabbit Anti-DsbA-L Antibody. Lane 1: mouse adipose tissue. Lane 2: none. Load: 10 µg per lane. Primary antibody: DsbA-L antibody at 1:1000 for overnight at 4°C. Secondary antibody: IRDye800™ rabbit secondary antibody at 1:10,000 for 45 min at RT. Block: 5% BLOTTO overnight at 4°C. Predicted/Observed size: ~25 kDa, ~25 kDa for DsbA-L protein. Other band(s): none.

## References

- Yagi T et al. Low-protein diet enhances adiponectin secretion in rats. *Biosci Biotechnol Biochem.* (2019)

## Disclaimer

This product is for research use only and is not intended for therapeutic or diagnostic applications. Please contact a technical service representative for more information. All products of animal origin manufactured by Rockland Immunochemicals are derived from starting materials of North American origin. Collection was performed in United States Department of Agriculture (USDA) inspected facilities and all materials have been inspected and certified to be free of disease and suitable for exportation. All properties listed are typical characteristics and are not specifications. All suggestions and data are offered in good faith but without guarantee as conditions and methods of use of our products are beyond our control. All claims must be made within 30 days following the date of delivery. The prospective user must determine the suitability of our materials before adopting them on a commercial scale. Suggested uses of our products are not recommendations to use our products in violation of any patent or as a license under any patent of Rockland Immunochemicals, Inc. If you require a commercial license to use this material and do not have one, then return this material, unopened to: Rockland Inc., P.O. BOX 5199, Limerick, Pennsylvania, USA.