



# SZABO SCANDIC

Part of Europa Biosite

## Produktinformation



Forschungsprodukte & Biochemikalien



Zellkultur & Verbrauchsmaterial



Diagnostik & molekulare Diagnostik



Laborgeräte & Service

Weitere Information auf den folgenden Seiten!  
See the following pages for more information!



### Lieferung & Zahlungsart

siehe unsere [Liefer- und Versandbedingungen](#)

### Zuschläge

- Mindermengenzuschlag
- Trockeneiszuschlag
- Gefahrgutzuschlag
- Expressversand

### SZABO-SCANDIC HandelsgmbH

Quellenstraße 110, A-1100 Wien

T. +43(0)1 489 3961-0

F. +43(0)1 489 3961-7

[mail@szabo-scandic.com](mailto:mail@szabo-scandic.com)

[www.szabo-scandic.com](http://www.szabo-scandic.com)

[linkedin.com/company/szaboscandic](https://www.linkedin.com/company/szaboscandic) 

**Datasheet for 100-401-D40****Fractin Antibody****Overview**

<b>Description:</b>	Anti-Fractin (RABBIT) Antibody - 100-401-D40
<b>Item No.:</b>	100-401-D40
<b>Size:</b>	100 µL
<b>Applications:</b>	IHC, WB
<b>Reactivity:</b>	Human, Rat
<b>Host Species:</b>	Rabbit

**Product Details**

<b>Background:</b>	Fractin Antibody detects human Fractin (fragment of actin) which is a caspase-specific cleavage product of actin and serves as a novel marker of apoptosis-related events. The antibody has been shown to detect the processes and cell bodies of degenerating neurons and plaque-associated microglia in Alzheimer's disease. It has recently been reported that Fractin may have a functional role in apoptotic signaling in oligodendrocytes. Anti-Fractin Antibody is ideal for investigators involved in Cell Apoptosis and, more generally in Neuroscience.
<b>Synonyms:</b>	Fragment of actin
<b>Host Species:</b>	Rabbit
<b>Clonality:</b>	Polyclonal
<b>Format:</b>	Antiserum

**Target Details**

<b>Gene Name:</b>	fragment of Actin
<b>Reactivity:</b>	Human, Rat
<b>Immunogen Type:</b>	Conjugated Peptide
<b>Immunogen:</b>	Anti-Fractin Antibody was produced in rabbit by repeated immunizations with Fractin- Synthetic peptide corresponding to amino acid residues from the C-terminal region conjugated to KLH.

**Purity/Specificity:** Anti-Fractin antibody is directed against human Fractin. Anti-Fractin antibodies were prepared from monospecific neat serum. Anti-Fractin antibody is specific for the ~32 kDa fractin protein in Western blots with no reactivity to intact actin. There is often a ladder of smaller bands in cells or culture or in vivo preparations due to further degradation by other proteases. Reactivity is expected against human and rat.

**Relevant Links:**

- [UniProtKB - P60709](#)
- [NCBI - ABD66582.1](#)
- [GeneID - 60](#)

## Application Details

**Tested Applications:** IHC, WB

**Application Note:** Anti-Fractin (Rabbit) Antibody has been tested by western blot, ICC, and IHC. Excepted reactivity to the 32 kDa fractin protein in Western blots. Specific conditions for reactivity should be optimized by the end user.

**Assay Dilutions:** All assays should be optimized by the user. Recommended dilutions (if any) may be listed below.

**IHC:** 1:100

**WB:** 1:1000

## Formulation

**Physical State:** Liquid

**Concentration:** Titrated value sufficient to run approximately 10 mini blots.

**Buffer:** None

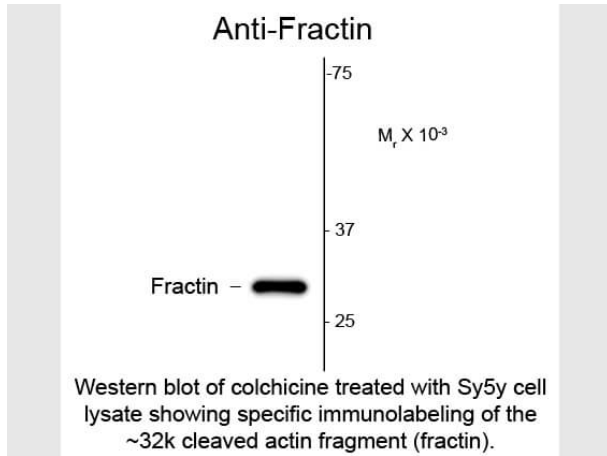
## Shipping & Handling

**Shipping Condition:** Dry Ice

**Storage Condition:** Store vial at -20° C prior to opening. This product is stable at 4° C as an undiluted liquid. For extended storage, aliquot contents and freeze at -20° C or below. Avoid cycles of freezing and thawing. Dilute only prior to immediate use.

**Expiration:** Expiration date is one (1) year from date of receipt.

## Images

**Western Blot**

Western Blot of Rabbit Anti-Fractin (Rabbit) Antibody. Lane 1: colchicine treated Sy5y cell lysate. Lane 2: none. Load: 10 µg per lane. Primary antibody: Fractin antibody at 1:1000 for overnight at 4°C. Secondary antibody: IRDye800™ rabbit secondary antibody at 1:10,000 for 45 min at RT. Block: 5% BLOTTO overnight at 4°C. Predicted/Observed size: ~ 32k , ~ 32k for cleaved actin fragment (fractin). Other band(s): none.

**Disclaimer**

This product is for research use only and is not intended for therapeutic or diagnostic applications. Please contact a technical service representative for more information. All products of animal origin manufactured by Rockland Immunochemicals are derived from starting materials of North American origin. Collection was performed in United States Department of Agriculture (USDA) inspected facilities and all materials have been inspected and certified to be free of disease and suitable for exportation. All properties listed are typical characteristics and are not specifications. All suggestions and data are offered in good faith but without guarantee as conditions and methods of use of our products are beyond our control. All claims must be made within 30 days following the date of delivery. The prospective user must determine the suitability of our materials before adopting them on a commercial scale. Suggested uses of our products are not recommendations to use our products in violation of any patent or as a license under any patent of Rockland Immunochemicals, Inc. If you require a commercial license to use this material and do not have one, then return this material, unopened to: Rockland Inc., P.O. BOX 5199, Limerick, Pennsylvania, USA.