



# SZABO SCANDIC

Part of Europa Biosite

## Produktinformation



Forschungsprodukte & Biochemikalien



Zellkultur & Verbrauchsmaterial



Diagnostik & molekulare Diagnostik



Laborgeräte & Service

Weitere Information auf den folgenden Seiten!  
See the following pages for more information!



### Lieferung & Zahlungsart

siehe unsere [Liefer- und Versandbedingungen](#)

### Zuschläge

- Mindermengenzuschlag
- Trockeneiszuschlag
- Gefahrgutzuschlag
- Expressversand

### SZABO-SCANDIC HandelsgmbH

Quellenstraße 110, A-1100 Wien

T. +43(0)1 489 3961-0

F. +43(0)1 489 3961-7

[mail@szabo-scandic.com](mailto:mail@szabo-scandic.com)

[www.szabo-scandic.com](http://www.szabo-scandic.com)

[linkedin.com/company/szaboscandic](https://www.linkedin.com/company/szaboscandic) 

## Datasheet for 100-401-D71

**MeCP2 Phospho S80 Antibody****Overview**

<b>Description:</b>	Anti-MeCP2 pS80 (RABBIT) Antibody - 100-401-D71
<b>Item No.:</b>	100-401-D71
<b>Size:</b>	100 µL
<b>Applications:</b>	IHC, WB
<b>Reactivity:</b>	Human, Mouse, Rat
<b>Host Species:</b>	Rabbit

**Product Details**

<b>Background:</b>	Anti-MeCP2 pS80 antibody detects MeCP2 when phosphorylated at Ser80. MECP2 (Methyl-CpG Binding Protein 2) is a chromosomal protein that binds to methylated DNA. It can bind specifically to a single methyl-CpG pair and is not influenced by sequences flanking the methyl-CpGs. MECP2 has been shown to mediate transcriptional repression through interaction with histone deacetylase and the corepressor SIN3A. Defects in MECP2 are the cause of Rett syndrome (RTT). RTT is an X-linked dominant disease, it is a progressive neurologic developmental disorder and one of the most common causes of mental retardation in females. Recent studies have reported a new phosphorylation site at Ser80. Phosphorylation and dephosphorylation of this site may be involved in modulating the dynamic function of MECP2 in neurons transiting between resting and active states within neural circuits that underlie behaviors.
<b>Synonyms:</b>	Methyl-CpG-binding protein 2, MeCp-2 protein
<b>Host Species:</b>	Rabbit
<b>Clonality:</b>	Polyclonal
<b>Format:</b>	Antiserum

**Target Details**

<b>Gene Name:</b>	MECP2
<b>Reactivity:</b>	Human, Mouse, Rat
<b>PTM Specificity:</b>	Phosphorylation

<b>Immunogen Type:</b>	Conjugated Peptide
<b>Immunogen:</b>	Anti-MeCP2 pS80 Antibody was produced in rabbit by repeated immunizations with MeCP Ser80 - Synthetic peptide corresponding to amino acid residues surrounding Ser 80 conjugated to KLH.
<b>Purity/Specificity:</b>	Anti-MeCP2 pS80 antibody was prepared from monospecific neat serum. This antibody is specific for the ~75 kDa MECP2 protein phosphorylated at Ser 80 in Western blots of human, rat and mouse brain extracts. Reactivity is expected against mouse and rat.
<b>Relevant Links:</b>	<ul style="list-style-type: none"><li>• <a href="#">UniProtKB - P51608</a></li><li>• <a href="#">GenelD - 4204</a></li><li>• <a href="#">UniProtKB - P51608.1</a></li></ul>

## Application Details

<b>Tested Applications:</b>	IHC, WB
<b>Application Note:</b>	Anti-MeCP2 pS80 (Rabbit) has been tested in Western Blotting and IHC. Expect ~75kDa in WB. Anti-MeCP2 pS80 antibodies have been used successfully for IHS on mouse brain sections. Specific conditions for reactivity should be optimized by the end user. Researchers should determine optimal titers for applications that are not stated below.
<b>Assay Dilutions:</b>	All assays should be optimized by the user. Recommended dilutions (if any) may be listed below.
<b>IHC:</b>	1:100
<b>WB:</b>	1:1000

## Formulation

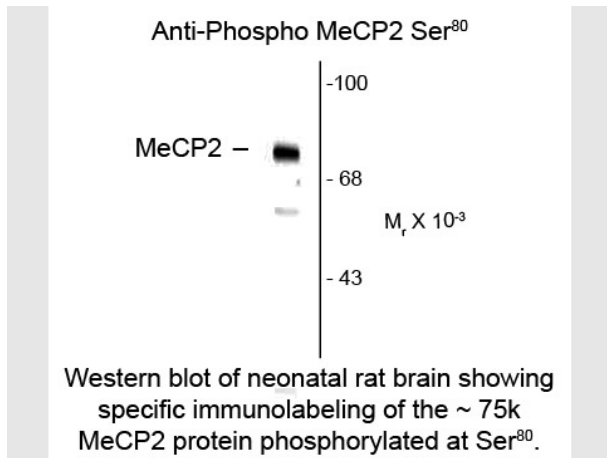
<b>Physical State:</b>	Liquid
<b>Concentration:</b>	Titred value sufficient to run approximately 10 mini blots.
<b>Buffer:</b>	0.01 M HEPES, 0.15 M Sodium Chloride, pH 7.5
<b>Stabilizer:</b>	0.1 mg/ml Bovine Serum Albumin (BSA) - IgG and Protease free, 50% (v/v) Glycerol

## Shipping & Handling

<b>Shipping Condition:</b>	Dry Ice
<b>Storage Condition:</b>	Store vial at -20° C prior to opening. This product is stable at 4° C as an undiluted liquid. For extended storage, aliquot contents and freeze at -20° C or below. Avoid cycles of freezing and thawing. Dilute only prior to immediate use.

**Expiration:** Expiration date is one (1) year from date of receipt.

## Images



### Western Blot

Western Blot of Rabbit Anti-MeCP2 pS80 Antibody. Lane 1: neonatal rat brain. Lane 2: none. Load: 10 µg per lane. Primary antibody: MeCP2 pS80 antibody at 1:1000 for overnight at 4°C. Secondary antibody: IRDye800™ rabbit secondary antibody at 1:10,000 for 45 min at RT. Block: 5% BLOTTO overnight at 4°C. Predicted/Observed size: ~75k, ~75k for MeCP2 protein phosphorylated at Ser80. Other band(s): none.

## Disclaimer

This product is for research use only and is not intended for therapeutic or diagnostic applications. Please contact a technical service representative for more information. All products of animal origin manufactured by Rockland Immunochemicals are derived from starting materials of North American origin. Collection was performed in United States Department of Agriculture (USDA) inspected facilities and all materials have been inspected and certified to be free of disease and suitable for exportation. All properties listed are typical characteristics and are not specifications. All suggestions and data are offered in good faith but without guarantee as conditions and methods of use of our products are beyond our control. All claims must be made within 30 days following the date of delivery. The prospective user must determine the suitability of our materials before adopting them on a commercial scale. Suggested uses of our products are not recommendations to use our products in violation of any patent or as a license under any patent of Rockland Immunochemicals, Inc. If you require a commercial license to use this material and do not have one, then return this material, unopened to: Rockland Inc., P.O. BOX 5199, Limerick, Pennsylvania, USA.