



SZABO SCANDIC

Part of Europa Biosite

Produktinformation



Forschungsprodukte & Biochemikalien



Zellkultur & Verbrauchsmaterial



Diagnostik & molekulare Diagnostik



Laborgeräte & Service

Weitere Information auf den folgenden Seiten!
See the following pages for more information!



Lieferung & Zahlungsart

siehe unsere [Liefer- und Versandbedingungen](#)

Zuschläge

- Mindermengenzuschlag
- Trockeneiszuschlag
- Gefahrgutzuschlag
- Expressversand

SZABO-SCANDIC HandelsgmbH

Quellenstraße 110, A-1100 Wien

T. +43(0)1 489 3961-0

F. +43(0)1 489 3961-7

mail@szabo-scandic.com

www.szabo-scandic.com

[linkedin.com/company/szaboscandic](https://www.linkedin.com/company/szaboscandic) 

Datasheet for 100-401-E45

Testicular Receptor 2 (TR2) Antibody**Overview**

Description:	Anti-Testicular Receptor 2 (TR2) (RABBIT) Antibody - 100-401-E45
Item No.:	100-401-E45
Size:	100 µL
Applications:	WB
Reactivity:	Human, Mouse, Rat
Host Species:	Rabbit

Product Details

Background:	TR2 antibody detects Testicular receptor 2 (TR2), which is a member of the orphan nuclear receptor family. It is widely expressed at a low level throughout the adult testis. TR2 represses transcription and binds DNA directly interacting with HDAC3 and HDAC4 via DNA-binding domains. TR2 has also been implicated in regulation of estrogen receptor activity in mammary glands. In addition, TR2 has recently been shown to form a heterodimer with TR4 that can bind to the direct repeat 6 element of the hepatitis B virus (HBV) enhancer II region thus suppressing HBV gene expression. Anti-TR2 Antibody is ideal for investigators involved in Cell Signaling, Neuroscience, and Stem Cell research.
Synonyms:	mTR2, Nuclear receptor subfamily 2 group C member 1, Orphan nuclear receptor TR2, Testicular receptor 2, Tr2, Tr2-11, Nr2c1
Host Species:	Rabbit
Clonality:	Polyclonal
Format:	Antiserum

Target Details

Gene Name:	Nr2c1
Reactivity:	Human, Mouse, Rat
Immunogen Type:	Recombinant Protein
Immunogen:	Anti-TR2 Antibody was produced in rabbit by repeated immunizations with TR2 fusion protein from the N-terminal region of the Testicular Receptor 2 protein.

Purity/Specificity:	Anti-TR2 antibody is directed against mouse Testicular Receptor 2 protein. Anti-TR2 antibody is provided as monospecific neat serum. Reactivity is expected against human and rat.
Relevant Links:	<ul style="list-style-type: none">• UniProtKB - Q505F1• GeneID - 22025• UniProtKB - Q505F1.3

Application Details

Tested Applications:	WB
Application Note:	Anti-Testicular Receptor 2 (Rabbit) antibody has been tested in Western Blots. Anti-Testicular Receptor 2 antibodies are specific for the ~64 kDa TR2 protein in Western blots of testes and nuclear extracts from MEL cell lines. Researchers should determine optimal titers for applications that are not stated below.
Assay Dilutions:	All assays should be optimized by the user. Recommended dilutions (if any) may be listed below.
WB:	1:1000

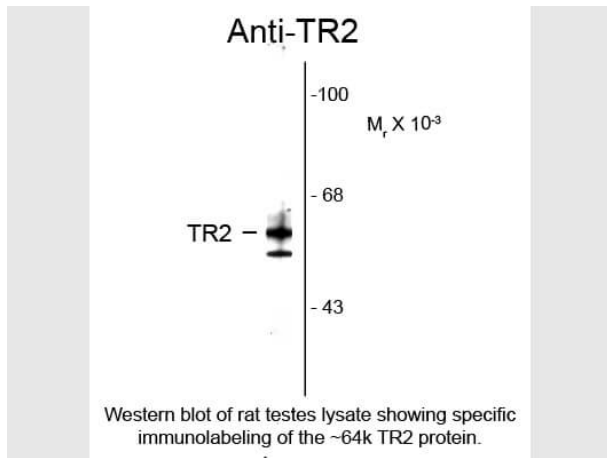
Formulation

Physical State:	Liquid
Concentration:	Titred value sufficient to run approximately 10 mini blots.

Shipping & Handling

Shipping Condition:	Dry Ice
Storage Condition:	Store vial at -20° C prior to opening. This product is stable at 4° C as an undiluted liquid. For extended storage, aliquot contents and freeze at -20° C or below. Avoid cycles of freezing and thawing. Dilute only prior to immediate use.
Expiration:	Expiration date is one (1) year from date of receipt.

Images

**Western Blot**

Western Blot of Rabbit Anti-Testicular Receptor 2 (TR2) Antibody. Lane 1: rat testes. Lane 2: none. Load: 10 μ g per lane. Primary antibody: TR 2 antibody at 1:1000 for overnight at 4°C. Secondary antibody: IRDye800™ rabbit secondary antibody at 1:10,000 for 45 min at RT. Block: 5% BLOTTO overnight at 4°C. Predicted/Observed size: ~64 kDa, ~64 kDa for TR-2 protein. Other band(s): TR2 splice variants and isoforms.

Disclaimer

This product is for research use only and is not intended for therapeutic or diagnostic applications. Please contact a technical service representative for more information. All products of animal origin manufactured by Rockland Immunochemicals are derived from starting materials of North American origin. Collection was performed in United States Department of Agriculture (USDA) inspected facilities and all materials have been inspected and certified to be free of disease and suitable for exportation. All properties listed are typical characteristics and are not specifications. All suggestions and data are offered in good faith but without guarantee as conditions and methods of use of our products are beyond our control. All claims must be made within 30 days following the date of delivery. The prospective user must determine the suitability of our materials before adopting them on a commercial scale. Suggested uses of our products are not recommendations to use our products in violation of any patent or as a license under any patent of Rockland Immunochemicals, Inc. If you require a commercial license to use this material and do not have one, then return this material, unopened to: Rockland Inc., P.O. BOX 5199, Limerick, Pennsylvania, USA.