



SZABO SCANDIC

Part of Europa Biosite

Produktinformation



Forschungsprodukte & Biochemikalien



Zellkultur & Verbrauchsmaterial



Diagnostik & molekulare Diagnostik



Laborgeräte & Service

Weitere Information auf den folgenden Seiten!
See the following pages for more information!



Lieferung & Zahlungsart

siehe unsere [Liefer- und Versandbedingungen](#)

Zuschläge

- Mindermengenzuschlag
- Trockeneiszuschlag
- Gefahrgutzuschlag
- Expressversand

SZABO-SCANDIC HandelsgmbH

Quellenstraße 110, A-1100 Wien

T. +43(0)1 489 3961-0

F. +43(0)1 489 3961-7

mail@szabo-scandic.com

www.szabo-scandic.com

[linkedin.com/company/szaboscandic](https://www.linkedin.com/company/szaboscandic) 

Datasheet for 100-401-E82**Aha1 Antibody****Overview**

Description:	Anti-Aha1 (RABBIT) Antibody - 100-401-E82
Item No.:	100-401-E82
Size:	100 µL
Applications:	IHC, WB
Reactivity:	Human, Mouse, Rat
Host Species:	Rabbit

Product Details

Background:	Aha1 is a member of the Hsp90 cochaperone family, and is thought to stimulate Hsp90 ATPase activity by competing with p23 and other co-chaperones for Hsp90 binding. It may affect a step in the endoplasmic reticulum to Golgi trafficking. Aha1 also interacts with HSPCA/Hsp90 and with the cytoplasmic tail of the vesicular stomatitis virus glycoproteins (VSV G). Aha1 is expressed in numerous tissues, including the brain, heart, skeletal muscle, and kidney, and at low levels, the liver and placenta. Aha1 might be a potential therapeutic strategy to increase sensitivity to HSP inhibitors.
Synonyms:	Aha1, SHSA1, HspC322, p38, Activator of 90 kDa heat shock protein ATPase homolog 1
Host Species:	Rabbit
Clonality:	Polyclonal
Format:	Antiserum

Target Details

Gene Name:	Ahsa1
Reactivity:	Human, Mouse, Rat
Immunogen Type:	Recombinant Protein
Immunogen:	Aha1 Antibody was produced from whole rabbit serum prepared by repeated immunizations with Mouse Aha1.

Purity/Specificity: Anti-Aha 1 Antibody was purified by Protein A chromatography. A BLAST analysis was used to suggest cross-reactivity with Aha 1 from Human, Mouse, and Rat based on 100% homology with the immunizing sequence. Cross-reactivity with Aha1 from other sources has not been determined. Heat Shock research.

Relevant Links:

- [NCBI - NP_666148.1](#)
- [GeneID - 217737](#)
- [UniProtKB - Q8BK64](#)

Application Details

Tested Applications: IHC, WB

Application Note: Anti-Aha1 Antibody has been tested in western blot, ICC, and IHC and is suitable for use in ELISA, IF microscopy and IP. Expect a band approximately ~38kDa on specific lysates. Specific conditions for reactivity should be optimized by the end user.

Assay Dilutions: All assays should be optimized by the user. Recommended dilutions (if any) may be listed below.

ELISA: 1:200

IHC: 1:1000

IP: User Optimized

WB: 0.5-1:1000

Formulation

Physical State: Liquid (sterile filtered)

Concentration: 85 mg/mL by Refractometry

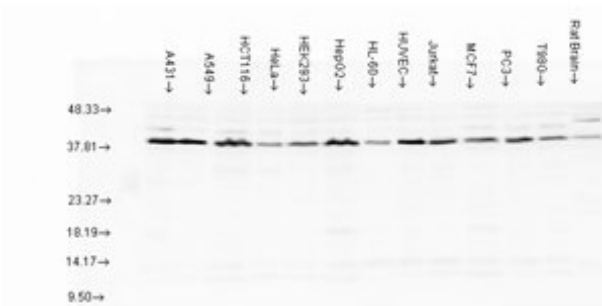
Shipping & Handling

Shipping Condition: Dry Ice

Storage Condition: Store vial at -20° C prior to opening. Aliquot contents and freeze at -20° C or below for extended storage. Avoid cycles of freezing and thawing. Centrifuge product if not completely clear after standing at room temperature. This product is stable for several weeks at 4° C as an undiluted liquid. Dilute only prior to immediate use.

Expiration: Expiration date is one (1) year from date of receipt.

Images



Western Blot

Western Blot of Rabbit anti-Aha1 antibody. Lane 1: A431 lysate. Lane 2: A549 lysate. Lane 3: HCT116 lysate. Lane 4: HeLa lysate. Lane 5: Hek293 lysate. Lane 6: HepG2 lysate. Lane 7: HL-6D lysate. Lane 8: HUVEC lysate. Lane 9: Jurkat lysate. Lane 10: MCF7 lysate. Lane 11: PC3 lysate. Lane 12: T98G lysate. Lane 13: Rat Brain lysate. Load: 1ug per lane. Primary antibody: Aha1 antibody at 1:1000 for overnight at 4°C. Secondary antibody: Goat anti Rabbit IgG HRP at 1:10,000 for 30 min at RT. Block: 5% Blotto overnight at 4°C. Predicated/Observed size: 38.1 kDa/38.1kDa for Aha1.

References

- Jinwal U et al. Reconstructing the Hsp90/Tau Machine. *Current Enzyme Inhibition* (2013)

Disclaimer

This product is for research use only and is not intended for therapeutic or diagnostic applications. Please contact a technical service representative for more information. All products of animal origin manufactured by Rockland Immunochemicals are derived from starting materials of North American origin. Collection was performed in United States Department of Agriculture (USDA) inspected facilities and all materials have been inspected and certified to be free of disease and suitable for exportation. All properties listed are typical characteristics and are not specifications. All suggestions and data are offered in good faith but without guarantee as conditions and methods of use of our products are beyond our control. All claims must be made within 30 days following the date of delivery. The prospective user must determine the suitability of our materials before adopting them on a commercial scale. Suggested uses of our products are not recommendations to use our products in violation of any patent or as a license under any patent of Rockland Immunochemicals, Inc. If you require a commercial license to use this material and do not have one, then return this material, unopened to: Rockland Inc., P.O. BOX 5199, Limerick, Pennsylvania, USA.