



SZABO SCANDIC

Part of Europa Biosite

Produktinformation



Forschungsprodukte & Biochemikalien



Zellkultur & Verbrauchsmaterial



Diagnostik & molekulare Diagnostik



Laborgeräte & Service

Weitere Information auf den folgenden Seiten!
See the following pages for more information!



Lieferung & Zahlungsart

siehe unsere [Liefer- und Versandbedingungen](#)

Zuschläge

- Mindermengenzuschlag
- Trockeneiszuschlag
- Gefahrgutzuschlag
- Expressversand

SZABO-SCANDIC HandelsgmbH

Quellenstraße 110, A-1100 Wien

T. +43(0)1 489 3961-0

F. +43(0)1 489 3961-7

mail@szabo-scandic.com

www.szabo-scandic.com

[linkedin.com/company/szaboscandic](https://www.linkedin.com/company/szaboscandic) 

Datasheet for 100-401-F54**HSP22 Antibody****Overview**

Description:	Anti-HSP22 (RABBIT) Antibody - 100-401-F54
Item No.:	100-401-F54
Size:	100 µL
Applications:	IF, IHC, IP, WB
Reactivity:	Human, Mouse, Rat
Host Species:	Rabbit

Product Details

Background:	Hsp22 (HSPB8) is a 196-amino acid protein that is a member of the small heat shock protein super-family and the human protein is most closely related to Hsp27. Similar to most other sHSPs, Hsp22 is predominately transcribed in skeletal muscle and heart, as well as the placenta. Hsp22 is a monomeric protein which interacts with HSPB1. It displays temperature-dependent chaperone activity. In a two hybrid screen, HspB8 interacted preferentially with a triple aspartate form of Hsp27 which mimics Hsp27 phosphorylated at Ser15, Ser78, and Ser82, as compared to wild-type Hsp27. HSPB8 has two binding domains (N and C Terminal) that are specific for different binding partners, and has the ability to bind itself and other sHSPs. The chaperone-like activity is of great importance to the function of Hsp22 in various processes including proliferation, apoptosis and macroautophagy. Mutations in the HSPB8 gene are associated with the inherited peripheral neuropathies, autosomal dominant distal hereditary motor neuropathy type IIA (dSMA) and axonal Charcot-Marie-Tooth disease type 2L (CMT2L).
Synonyms:	Alpha crystallin C chain, CMT2L, CRYAC, DHMN2, H11, Heat shock 22kDa protein 8, HMN2, HSB8, HspB8, Heat shock protein beta-8, E2IG1, HSP22, E2-induced gene 1 protein, Protein kinase H11
Host Species:	Rabbit
Clonality:	Polyclonal
Format:	Antiserum

Target Details

Gene Name:	HSPB8
-------------------	-------

Reactivity:	Human, Mouse, Rat
Immunogen Type:	Recombinant Protein
Immunogen:	Hsp22 Antibody was produced from whole rabbit serum prepared by repeated immunizations raised against human Hsp22.
Purity/Specificity:	Anti-Hsp22 Antibody was prepared from monospecific antiserum by delipidation and defibrination. A BLAST analysis was used to suggest cross-reactivity with Hsp22 from Human, Mouse, and Rat based on 100% homology with the immunizing sequence. Not yet tested on other species. Does not cross-react with Hsp27 or alpha-crystallin. Cross-reactivity with Hsp22 from other sources has not been determined. Heat Shock research.
Relevant Links:	<ul style="list-style-type: none">• NCBI - NP_055180.1• GeneID - 26353• UniProtKB - Q9UJY1

Application Details

Tested Applications:	IF, IHC, IP, WB
Application Note:	Anti-Hsp22 Antibody has been tested in WB, IF, IHC, and IP. Expect a band approximately ~22kDa on specific lysates. Specific conditions for reactivity should be optimized by the end user.
Assay Dilutions:	All assays should be optimized by the user. Recommended dilutions (if any) may be listed below.
IF:	User Optimized
IP:	User Optimized
WB:	1:1000

Formulation

Physical State:	Liquid (sterile filtered)
Concentration:	85 mg/mL by Refractometry

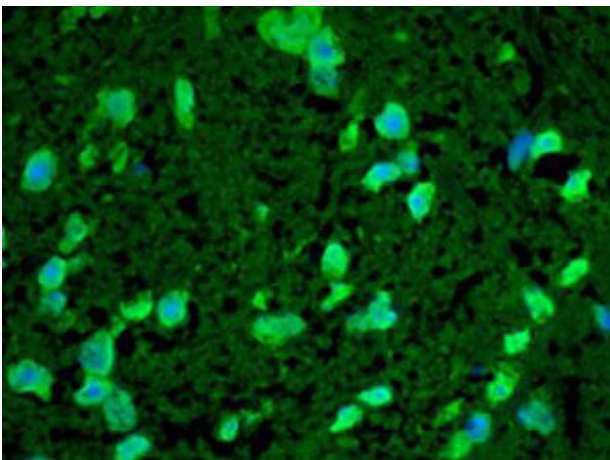
Shipping & Handling

Shipping Condition:	Dry Ice
----------------------------	---------

Storage Condition: Store vial at -20° C prior to opening. Aliquot contents and freeze at -20° C or below for extended storage. Avoid cycles of freezing and thawing. Centrifuge product if not completely clear after standing at room temperature. This product is stable for several weeks at 4° C as an undiluted liquid. Dilute only prior to immediate use.

Expiration: Expiration date is one (1) year from date of receipt.

Images



Immunofluorescence Microscopy

Immunofluorescence of rabbit anti-Hsp22 antibody. Tissue: mouse spinal cord sections. Antigen retrieval: not required. Primary Antibody: Hsp22 antibody at 10ug/ml for 1h at RT. Secondary antibody: Alexa 488 rabbit secondary at 1:10,000 for 45 min at RT. Localization: nuclear. Staining: Hsp22 as green fluorescent signal merged with DAPI counterstain.



Western Blot

Western Blot of rabbit anti-Hsp22 antibody. Lane 1: rat skeletal muscle. Lane 2: none. Load: 35 µg per lane. Primary antibody: Hsp22 antibody at 1:1000 for overnight at 4°C. Secondary antibody: IRDye800™ rabbit secondary antibody at 1:10,000 for 45 min at RT. Block: 5% BLOTTO overnight at 4°C. Predicted/Observed size: 21.6 kDa/~23 kDa, 40kDa for Hsp22. Other band(s): Hsp22 splice variant and isoform.

Disclaimer

This product is for research use only and is not intended for therapeutic or diagnostic applications. Please contact a technical service representative for more information. All products of animal origin manufactured by Rockland Immunochemicals are derived from starting materials of North American origin. Collection was performed in United States Department of Agriculture (USDA) inspected facilities and all materials have been inspected and certified to be free of disease and suitable for exportation. All properties listed are typical characteristics and are not specifications. All suggestions and data are offered in good faith but without guarantee as conditions and methods of use of our products are beyond our control. All claims must be made within 30 days following the date of delivery. The prospective user must determine the suitability of our materials before adopting them on a commercial scale. Suggested uses of our products are not recommendations to use our products in violation of any patent or as a license under any patent of Rockland Immunochemicals, Inc. If you require a commercial license to use this material and do not have one, then return this material, unopened to: Rockland Inc., P.O. BOX 5199, Limerick, Pennsylvania, USA.