



SZABO SCANDIC

Part of Europa Biosite

Produktinformation



Forschungsprodukte & Biochemikalien



Zellkultur & Verbrauchsmaterial



Diagnostik & molekulare Diagnostik



Laborgeräte & Service

Weitere Information auf den folgenden Seiten!
See the following pages for more information!



Lieferung & Zahlungsart

siehe unsere [Liefer- und Versandbedingungen](#)

Zuschläge

- Mindermengenzuschlag
- Trockeneiszuschlag
- Gefahrgutzuschlag
- Expressversand

SZABO-SCANDIC HandelsgmbH

Quellenstraße 110, A-1100 Wien

T. +43(0)1 489 3961-0

F. +43(0)1 489 3961-7

mail@szabo-scandic.com

www.szabo-scandic.com

[linkedin.com/company/szaboscandic](https://www.linkedin.com/company/szaboscandic) 

Datasheet for 100-401-GJ0S**ALG6 Antibody****Overview**

Description:	Anti-ALG6 (RABBIT) Antibody - 100-401-GJ0S
Item No.:	100-401-GJ0S
Size:	25 µL
Applications:	ELISA, IHC, WB
Reactivity:	Human
Host Species:	Rabbit

Product Details

Background:	Anti-ALG6 antibody was designed, produced, and validated as part of the Joy Cappel Young Investigator Award (JCYIA). Dolichyl pyrophosphate Man9GlcNAc2 alpha-1,3-glycosyltransferase is an enzyme that is encoded by the ALG6 gene in humans. This gene encodes ALG6/ALG8 member of glycosyltransferase family. The encoded protein catalyzes the addition of the first glucose residue to the growing lipid-linked oligosaccharide precursor of N-linked glycosylation. Mutations in this gene are associated with congenital disorders of glycosylation type. Anti-ALG6 is ideal for researchers interested in Infectious disease, especially HIV and hepatitis virus infections. Anti-ALG6 antibody is applicable to methods for diagnosis and, in particular, to methods for diagnosing infections using biomarkers targeting exosomes secreted in bodily fluids.
Synonyms:	rabbit anti-ALG6 Antibody, rabbit anti-ALG-6 Antibody, Dolichyl pyrophosphate Man9GlcNAc2 alpha-1,3-glycosyltransferase, Asparagine-linked glycosylation protein 6 homolog, Dol-P-Glc:Man(9)GlcNAc(2)-PP-Dol alpha-1,3-glycosyltransferase, Dolichyl-P-Glc:Man9GlcNAc2-PP-dolichyl glycosyltransferase, ALG6 Antibody, My046
Host Species:	Rabbit
Clonality:	Polyclonal
Format:	IgG

Target Details

Gene Name:	ALG6
Reactivity:	Human

Immunogen Type:	Conjugated Peptide
Immunogen:	This whole rabbit serum was prepared by repeated immunizations with a synthetic peptide, corresponding to a region near the N-terminus of human ALG6 protein, conjugated to KLH.
Purity/Specificity:	ALG6 Antibody antiserum is directed against human ALG6. A 58 kDa band is detected when assayed by immunoblot. Cross reactivity is expected against human ALG6 protein based on a 100% homology of the amino acid sequence of the immunogen between rat, mouse, drosophila, and pongo abelii.
Relevant Links:	<ul style="list-style-type: none">• UniProtKB - Q9Y672

Application Details

Tested Applications:	ELISA, IHC, WB
Application Note:	Anti-ALG6 antibody has been tested in ELISA, western blot, and immunohistochemistry. Specific conditions for reactivity should be optimized by the end user. Expect a band approximately 58kDa in size corresponding to ALG6 protein by Western blotting in the appropriate cell lysate or extract.
Assay Dilutions:	All assays should be optimized by the user. Recommended dilutions (if any) may be listed below.
ELISA:	1:45,000
IHC:	4µg/mL
WB:	1:1000

Formulation

Physical State:	Liquid (sterile filtered)
Concentration:	80 mg/mL by Refractometry
Buffer:	0.02 M Potassium Phosphate, 0.15 M Sodium Chloride, pH 7.2
Preservative:	0.01% (w/v) Sodium Azide
Stabilizer:	None

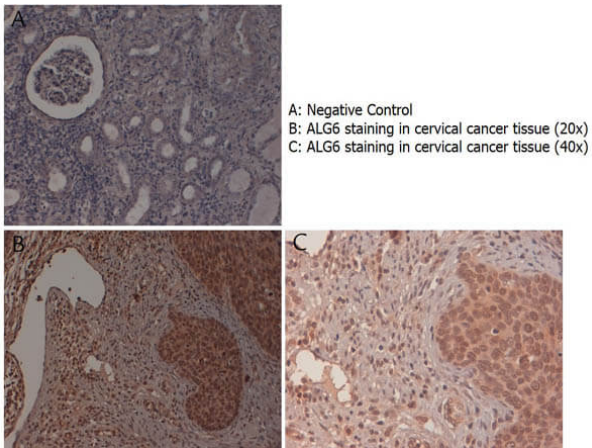
Shipping & Handling

Shipping Condition:	Dry Ice
----------------------------	---------

Storage Condition: Store vial at -20° C or below prior to opening. This vial contains a relatively low volume of reagent (25 µL). To minimize loss of volume dilute 1:10 by adding 225 µL of the buffer stated above directly to the vial. Recap, mix thoroughly and briefly centrifuge to collect the volume at the bottom of the vial. Use this intermediate dilution when calculating final dilutions as recommended below. Store the vial at -20°C or below after dilution. Avoid cycles of freezing and thawing.

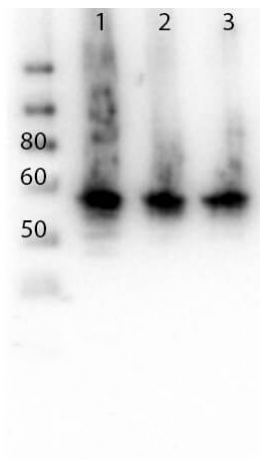
Expiration: Expiration date is one (1) year from date of receipt.

Images



Immunohistochemistry

Immunohistochemistry with anti-ALG6 antibody showing ALG6 staining in the squamous epithelium of the uterine cervix as well as in inflammatory elements diffused in the stroma of human cervical cancer tissue at 20x and 40x (B & C). Formalin fixed/paraffin embedded sections were subjected to heat induced epitope retrieval (HIER) at pH 6.2 and then incubated with rabbit anti-human ALG6 antibody at 4.0 µg/ml for 60 minutes. The reaction was developed using MACH 1 universal HRP polymer detection system and visualized with 3'3-diamino-benzidine substrate (DAB).



Western Blot

Western Blot of Rabbit anti-ALG6 antibody. Lane 1: HeLa Whole Cell lysate (p/n W09-000-364). Lane 2: MOLT4 Whole Cell lysate (p/n W09-001-GK2). Lane 3: K-562 Whole Cell lysate (p/n W09-001-GJ7). Load: 10 µg per lane. Primary antibody: ALG6 antibody at 1:500 for overnight at 4°C. Secondary antibody: Peroxidase rabbit secondary antibody (p/n 611-103-122) at 1:40,000 for 30 min at RT. Block: TBS-Casein overnight at 4°C. Predicted/Observed size: 58 kDa ALG-6.

Disclaimer

This product is for research use only and is not intended for therapeutic or diagnostic applications. Please contact a technical service representative for more information. All products of animal origin manufactured by Rockland Immunochemicals are derived from starting materials of North American origin. Collection was performed in United States Department of Agriculture (USDA) inspected facilities and all materials have been inspected and certified to be free of disease and suitable for exportation. All properties listed are typical characteristics and are not specifications. All suggestions and data are offered in good faith but without guarantee as conditions and methods of use of our products are beyond our control. All claims must be made within 30 days following the date of delivery. The prospective user must determine the suitability of our materials before adopting them on a commercial scale. Suggested uses of our products are not recommendations to use our products in violation of any patent or as a license under any patent of Rockland Immunochemicals, Inc. If you require a commercial license to use this material and do not have one, then return this material, unopened to: Rockland Inc., P.O. BOX 5199, Limerick, Pennsylvania, USA.