



SZABO SCANDIC

Part of Europa Biosite

Produktinformation



Forschungsprodukte & Biochemikalien



Zellkultur & Verbrauchsmaterial



Diagnostik & molekulare Diagnostik



Laborgeräte & Service

Weitere Information auf den folgenden Seiten!
See the following pages for more information!



Lieferung & Zahlungsart

siehe unsere [Liefer- und Versandbedingungen](#)

Zuschläge

- Mindermengenzuschlag
- Trockeneiszuschlag
- Gefahrgutzuschlag
- Expressversand

SZABO-SCANDIC HandelsgmbH

Quellenstraße 110, A-1100 Wien

T. +43(0)1 489 3961-0

F. +43(0)1 489 3961-7

mail@szabo-scandic.com

www.szabo-scandic.com

[linkedin.com/company/szaboscandic](https://www.linkedin.com/company/szaboscandic) 

Datasheet for 100-401-H91**Lysyl Oxidase Antibody****Overview**

Description:	Anti-Lysyl Oxidase (RABBIT) Antibody - 100-401-H91
Item No.:	100-401-H91
Size:	100 µL
Applications:	IF, IHC, IP, WB
Reactivity:	Human, Mouse
Host Species:	Rabbit

Product Details

Background: Anti-Lysyl Oxidase antibody detects human Lysyl Oxidase. Lysyl Oxidase (LOX) belongs to a heterogeneous family of enzymes that oxidize primary amine substrates to reactive aldehydes. It plays a vital role in the formation and repair of ECM. Localized both in the cytosol and nucleus, it catalyzes the oxidation and deamination of epsilon-NH₂ group of lysine and hydroxylysine residues to alpha-amino adipic-delta-semialdehyde. This is the first step that initiates the covalent cross-linking of collagen and tropoelastin resulting in the formation of insoluble collagen and elastic fibers in the extracellular matrix. LOX is a multifunctional enzyme having diverse biological functions such as developmental regulation, tumor suppression, cell motility and cellular senescence. Deficiency of LOX is seen in certain carcinomas and 3X-linked recessive human connective tissue disorders—Cutis Laxa. Anti-Lysyl Oxidase antibody is ideal for investigators involved in cytokines and growth factors.

Synonyms:	Lysyl oxidase, LOX, Protein-lysine-6 oxidase
Host Species:	Rabbit
Clonality:	Polyclonal
Format:	Antiserum

Target Details

Gene Name:	LOX
Reactivity:	Human, Mouse
Immunogen Type:	Native Protein

Immunogen:	Lysyl Oxidase Antibody was produced from whole rabbit serum prepared by repeated immunizations with the human protein Lysyl Oxidase at an internal amino acid sequence.
Purity/Specificity:	Anti-Lysyl Oxidase Antibody is crude rabbit sera. A BLAST analysis was used to suggest cross-reactivity with Anti-Lysyl Oxidase from human, bovine, chimpanzee, mouse and rat 100% homology with the immunizing sequence. Predicted reactivity with chicken, dog, pig, and xenopus. Cross-reactivity with Anti-Lysyl Oxidase from other sources has not been determined.
Relevant Links:	<ul style="list-style-type: none">• UniProtKB - P28300• NCBI - NP_002308.2• GeneID - 4015

Application Details

Tested Applications:	IF, IHC, IP, WB
Application Note:	Anti-Lysyl Oxidase antibody has been tested in WB, ICC/IF, IHC-F, IHC-P, IP. Expect a band approximately 31kDa on specific lysates. Specific conditions for reactivity should be optimized by the end user.
Assay Dilutions:	All assays should be optimized by the user. Recommended dilutions (if any) may be listed below.
IF:	User Optimized
IHC:	1:100
IP:	User Optimized
WB:	1:250-1:1000

Formulation

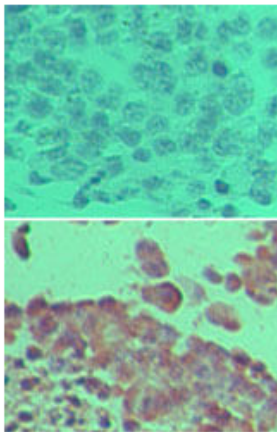
Physical State:	Liquid
Preservative:	0.05% (w/v) Sodium Azide
Stabilizer:	50% (v/v) Glycerol

Shipping & Handling

Shipping Condition:	Dry Ice
----------------------------	---------

Storage Condition:	Store vial at -20° C prior to opening. Aliquot contents and freeze at -20° C or below for extended storage. Avoid cycles of freezing and thawing. Centrifuge product if not completely clear after standing at room temperature. This product is stable for several weeks at 4° C as an undiluted liquid. Dilute only prior to immediate use.
Expiration:	Expiration date is one (1) year from date of receipt.

Images



Immunohistochemistry

Immunohistochemistry of Rabbit anti-Lysyl Oxidase (LOX) antibody. Tissue: mouse skin. Fixation: formalin fixed paraffin embedded. Antigen retrieval: not required. Primary antibody: Top: isotype control, Bottom: Lysyl Oxidase antibody at 1:100 for 1 h at RT. Secondary antibody: Peroxidase rabbit secondary antibody at 1:10,000 for 45 min at RT. Staining: Tissue stained with X-gal (blue) prior to embedding, LOX staining brown, with nuclear red counterstain.

Disclaimer

This product is for research use only and is not intended for therapeutic or diagnostic applications. Please contact a technical service representative for more information. All products of animal origin manufactured by Rockland Immunochemicals are derived from starting materials of North American origin. Collection was performed in United States Department of Agriculture (USDA) inspected facilities and all materials have been inspected and certified to be free of disease and suitable for exportation. All properties listed are typical characteristics and are not specifications. All suggestions and data are offered in good faith but without guarantee as conditions and methods of use of our products are beyond our control. All claims must be made within 30 days following the date of delivery. The prospective user must determine the suitability of our materials before adopting them on a commercial scale. Suggested uses of our products are not recommendations to use our products in violation of any patent or as a license under any patent of Rockland Immunochemicals, Inc. If you require a commercial license to use this material and do not have one, then return this material, unopened to: Rockland Inc., P.O. BOX 5199, Limerick, Pennsylvania, USA.