



SZABO SCANDIC

Part of Europa Biosite

Produktinformation



Forschungsprodukte & Biochemikalien



Zellkultur & Verbrauchsmaterial



Diagnostik & molekulare Diagnostik



Laborgeräte & Service

Weitere Information auf den folgenden Seiten!
See the following pages for more information!



Lieferung & Zahlungsart

siehe unsere [Liefer- und Versandbedingungen](#)

Zuschläge

- Mindermengenzuschlag
- Trockeneiszuschlag
- Gefahrgutzuschlag
- Expressversand

SZABO-SCANDIC HandelsgmbH

Quellenstraße 110, A-1100 Wien

T. +43(0)1 489 3961-0

F. +43(0)1 489 3961-7

mail@szabo-scandic.com

www.szabo-scandic.com

[linkedin.com/company/szaboscandic](https://www.linkedin.com/company/szaboscandic) 

Datasheet for 100-401-I35**TRIF Antibody****Overview**

Description:	Anti-TRIF (RABBIT) Antibody - 100-401-I35
Item No.:	100-401-I35
Size:	200 µL
Applications:	IF, IHC, IP, WB
Reactivity:	Mouse
Host Species:	Rabbit

Product Details

Background:	Anti-TRIF antibody detects mouse TRIF. TICAM (Toll-interleukin 1 receptor domain (TIR)-containing adaptor molecule-1) or TRIF (Toll/IL-1 receptor domain-containing adapter inducing IFN-beta) plays an essential role in the MyD88-independent signaling of TLR3. Anti-TRIF antibody is ideal for investigators involved in cytokines and growth factor research.
Synonyms:	Trif, TIR domain-containing adapter molecule 1, TICAM-1, Proline-rich, vinculin and TIR domain-containing protein B, Putative NF-kappa-B-activating protein 502H, Toll-interleukin-1 receptor domain-containing adapter protein inducing interferon beta, TIR domain-containing adapter protein inducing IFN-beta
Host Species:	Rabbit
Clonality:	Polyclonal
Format:	Antiserum

Target Details

Gene Name:	Ticam1
Reactivity:	Mouse
Immunogen Type:	Conjugated Peptide
Immunogen:	TRIF Antibody was produced from whole rabbit serum prepared by repeated immunizations with a synthetic peptide corresponding to internal amino acids of the mouse protein TRIF.

Purity/Specificity: Anti-TRIF antibody is sera. A BLAST analysis was used to suggest cross-reactivity with Anti-TRIF from mouse based on 100% homology with the immunizing sequence. Cross-reactivity with Anti-TRIF from other sources has not been determined.

Relevant Links:

- [UniProtKB - Q80UF7](#)
- [NCBI - NP_778154.1](#)
- [GeneID - 106759](#)

Application Details

Tested Applications: IF, IHC, IP, WB

Application Note: Anti-TRIF antibody has been tested by WB, ICC/IF, IHC, IHC-P, and IP. Expect a band approximately 76kDa on specific lysates. Specific conditions for reactivity should be optimized by the end user.

Assay Dilutions: All assays should be optimized by the user. Recommended dilutions (if any) may be listed below.

IF: User Optimized

IHC: User Optimized

IP: User Optimized

WB: 1:500-1:1000

Formulation

Physical State: Liquid

Buffer: 0.02 M Potassium Phosphate, 0.15 M Sodium Chloride, pH 7.2

Preservative: 0.05% (w/v) Sodium Azide

Stabilizer: 0.05% BSA

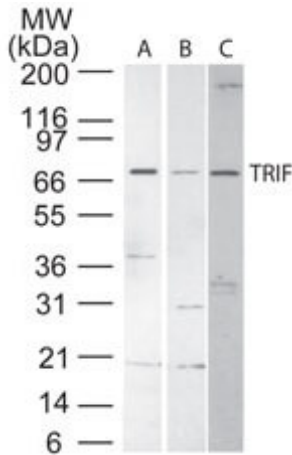
Shipping & Handling

Shipping Condition: Dry Ice

Storage Condition: Store vial at -20° C prior to opening. Aliquot contents and freeze at -20° C or below for extended storage. Avoid cycles of freezing and thawing. Centrifuge product if not completely clear after standing at room temperature. This product is stable for several weeks at 4° C as an undiluted liquid. Dilute only prior to immediate use.

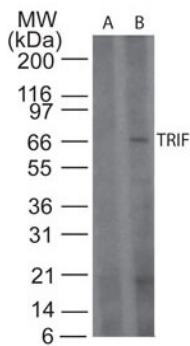
Expiration: Expiration date is one (1) year from date of receipt.

Images



Western Blot

Western Blot of Rabbit anti-TRIF antibody. Lane A: mouse intestine lysate. Lane B: mouse spleen lysate. Lane C: RAW lysate. Load: 30 µg per lane. Primary antibody: TRIF antibody at 1:1000 for overnight at 4°C. Secondary antibody: IRDye800™ rabbit secondary antibody at 1:10,000 for 45 min at RT. Block: 5% BLOTTO overnight at 4°C. Predicted/Observed size: ~70 kDa for TRIF. Other band(s): none.



Western Blot

Western Blot of Rabbit anti-TRIF antibody. Lane A: mouse spleen lysate in the presence of immunizing peptide. Lane B: mouse spleen lysate. Load: 30 µg per lane. Primary antibody: TRIF antibody at 1:1000 for overnight at 4°C. Secondary antibody: IRDye800™ rabbit secondary antibody at 1:10,000 for 45 min at RT. Block: 5% BLOTTO overnight at 4°C. Predicted/Observed size: ~70 kDa for TRIF. Other band(s): none.

Disclaimer

This product is for research use only and is not intended for therapeutic or diagnostic applications. Please contact a technical service representative for more information. All products of animal origin manufactured by Rockland Immunochemicals are derived from starting materials of North American origin. Collection was performed in United States Department of Agriculture (USDA) inspected facilities and all materials have been inspected and certified to be free of disease and suitable for exportation. All properties listed are typical characteristics and are not specifications. All suggestions and data are offered in good faith but without guarantee as conditions and methods of use of our products are beyond our control. All claims must be made within 30 days following the date of delivery. The prospective user must determine the suitability of our materials before adopting them on a commercial scale. Suggested uses of our products are not recommendations to use our products in violation of any patent or as a license under any patent of Rockland Immunochemicals, Inc. If you require a commercial license to use this material and do not have one, then return this material, unopened to: Rockland Inc., P.O. BOX 5199, Limerick, Pennsylvania, USA.