



SZABO SCANDIC

Part of Europa Biosite

Produktinformation



Forschungsprodukte & Biochemikalien



Zellkultur & Verbrauchsmaterial



Diagnostik & molekulare Diagnostik



Laborgeräte & Service

Weitere Information auf den folgenden Seiten!
See the following pages for more information!



Lieferung & Zahlungsart

siehe unsere [Liefer- und Versandbedingungen](#)

Zuschläge

- Mindermengenzuschlag
- Trockeneiszuschlag
- Gefahrgutzuschlag
- Expressversand

SZABO-SCANDIC HandelsgmbH

Quellenstraße 110, A-1100 Wien

T. +43(0)1 489 3961-0

F. +43(0)1 489 3961-7

mail@szabo-scandic.com

www.szabo-scandic.com

[linkedin.com/company/szaboscandic](https://www.linkedin.com/company/szaboscandic) 

Datasheet for 100-401-J03

Myosin-6 Antibody**Overview**

Description:	Anti-Myosin 6 (RABBIT) Antibody - 100-401-J03
Item No.:	100-401-J03
Size:	100 µL
Applications:	WB
Reactivity:	Human, Pig
Host Species:	Rabbit

Product Details

Background: Myosin VI is a myosin superfamily member with unique and intriguing features that allow it to fill a still-expanding number of cell biological roles. This actin-based motor produces force that acts towards the minus end of actin filaments, which is the opposite direction to all other characterized myosins.

In mammalian cells, myosin VI is localized to endocytic vesicles, membrane ruffles, the cytosol and the Golgi complex. Its motor function is essential for several physiological functions of the cell, including normal rates of endocytosis, maintenance of Golgi morphology and protein secretion. Myosin VI regulates epithelial cell migration and plays a role in the maintenance of adhesive cellular contacts within epithelial cell layers. It is highly expressed in ovarian cancers and prostate cancers and its expression level, which is upregulated by DNA damage in a p53-dependent manner, correlates with the potential of the tumor to disseminate.

More recently, myosin VI has been found involved in EGFR endocytosis through a clathrin dependent mechanism.

Synonyms:	rabbit anti-Myosin-6 Antibody, MyosinVI, Unconventional myosin 6
Host Species:	Rabbit
Clonality:	Polyclonal
Format:	Antiserum

Target Details

Gene Name: MYO6

Reactivity:	Human, Pig
Immunogen Type:	Recombinant Protein
Immunogen:	Anti-Myosin-6 was prepared from whole rabbit serum produced by repeated immunizations with full length myosin-6 construct expressed in SF9 insect cells corresponding to porcine myosyn-6 protein.
Purity/Specificity:	Anti-Myosin-6 is directed against the myosin-6 protein. The product was prepared from monospecific antiserum by delipidation and defibrination. A BLAST analysis was used to suggest reactivity with 94% human Myosin VI. Cross-reactivity with myosin6 from other sources have not been determined.
Relevant Links:	<ul style="list-style-type: none">• UniProtKB - Q29122• NCBI - NP_999186.1• GeneID - 397085

Application Details

Tested Applications:	WB
Application Note:	Myosin-6 antibody has been tested by western blot. For western blots expect a band of approximately 150 kDa in size corresponding to full length and ~85kDa and ~60kDa for truncated myosin-6 protein. Specific conditions for reactivity should be optimized by the end user. This antibody is suitable for use in ELISA.
Assay Dilutions:	All assays should be optimized by the user. Recommended dilutions (if any) may be listed below.
ELISA:	1:10,000
WB:	1:1000

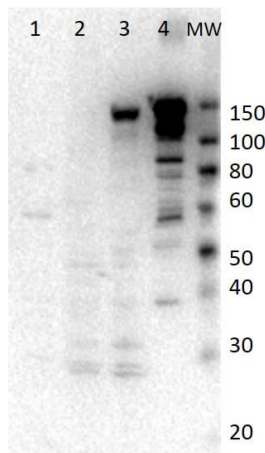
Formulation

Physical State:	Liquid (sterile filtered)
Concentration:	25 mg/mL by Refractometry
Buffer:	0.02 M Potassium Phosphate, 0.15 M Sodium Chloride, pH 7.2
Preservative:	0.01% (w/v) Sodium Azide
Stabilizer:	None

Shipping & Handling

Shipping Condition:	Dry Ice
Storage Condition:	Store vial at -20° C prior to opening. Aliquot contents and freeze at -20° C or below for extended storage. Avoid cycles of freezing and thawing. Centrifuge product if not completely clear after standing at room temperature. This product is stable for several weeks at 4° C as an undiluted liquid. Dilute only prior to immediate use.
Expiration:	Expiration date is one (1) year from date of receipt.

Images



Western Blot

Western Blot of Rabbit anti-Myosin-6 antibody. Lane 1: SF9 cell lysate of truncated smooth myosin. Lane 2: Jurkat lysate (p/n W09-001-370). Lane 3: LnCap lysate (p/n W09-001-GJ9). Lane 4: Recombinant myosin VI. Load: 20µg per lane for cell lysate. 50ng of recombinant protein. Primary antibody: Myosin 6 antibody at 1:1000 for overnight at 4°C. Secondary antibody: HRP rabbit secondary antibody at 1:40,000 for 60 min at RT. Block: 5% BLOTTO overnight at 4°C. Predicted/Observed size: 150 kDa for Myo6.

Disclaimer

This product is for research use only and is not intended for therapeutic or diagnostic applications. Please contact a technical service representative for more information. All products of animal origin manufactured by Rockland Immunochemicals are derived from starting materials of North American origin. Collection was performed in United States Department of Agriculture (USDA) inspected facilities and all materials have been inspected and certified to be free of disease and suitable for exportation. All properties listed are typical characteristics and are not specifications. All suggestions and data are offered in good faith but without guarantee as conditions and methods of use of our products are beyond our control. All claims must be made within 30 days following the date of delivery. The prospective user must determine the suitability of our materials before adopting them on a commercial scale. Suggested uses of our products are not recommendations to use our products in violation of any patent or as a license under any patent of Rockland Immunochemicals, Inc. If you require a commercial license to use this material and do not have one, then return this material, unopened to: Rockland Inc., P.O. BOX 5199, Limerick, Pennsylvania, USA.