



SZABO SCANDIC

Part of Europa Biosite

Produktinformation



Forschungsprodukte & Biochemikalien



Zellkultur & Verbrauchsmaterial



Diagnostik & molekulare Diagnostik



Laborgeräte & Service

Weitere Information auf den folgenden Seiten!
See the following pages for more information!



Lieferung & Zahlungsart

siehe unsere [Liefer- und Versandbedingungen](#)

Zuschläge

- Mindermengenzuschlag
- Trockeneiszuschlag
- Gefahrgutzuschlag
- Expressversand

SZABO-SCANDIC HandelsgmbH

Quellenstraße 110, A-1100 Wien

T. +43(0)1 489 3961-0

F. +43(0)1 489 3961-7

mail@szabo-scandic.com

www.szabo-scandic.com

[linkedin.com/company/szaboscandic](https://www.linkedin.com/company/szaboscandic) 

Datasheet for 100-401-J05

HMW E.Coli Host Cell Proteins Antibody**Overview**

Description:	Anti-High Molecular Weight E. coli Protein Host Cell Protein (HCP) Antibody - 100-401-J05
Item No.:	100-401-J05
Size:	100 µL
Applications:	2D-PAGE, ELISA, WB
Reactivity:	E. coli
Host Species:	Rabbit

Product Details

Background:	Anti-HMW Host Cell Proteins Antibody recognizes high molecular weight protein fractions from E.coli. This antibody has been analyzed by 2D electrophoresis western blot to assure highest possible coverage of E.coli HCP. Host Cell Proteins are process-related impurities derived from a host cell expression system that may be present in trace amounts in a final drug substance. HCP Antibodies are used to detect impurities in biologically-based therapeutics. Detecting impurities often unseen by 1-D electrophoresis, a 2D electrophoresis western blot analysis delivers more complete insight into the immunocoverage of protein components of the host cell lysate.
Synonyms:	rabbit anti-E.Coli Host Cell Protein antibody, HCP antibody, Anti-HCP, Anti-Host Cell Protein, high molecular weight E.Coli HCP proteins antibody, HMW HCP, 2D detection antibody
Host Species:	Rabbit
Clonality:	Polyclonal
Format:	Antiserum

Target Details

Reactivity:	E. coli
Immunogen Type:	Native Protein
Immunogen:	Anti-HMW E.Coli Host Cell Proteins Antibody was prepared by repeated immunizations with a mixture high molecular weight (HMW) proteins from E.Coli (BL21).

Purity/Specificity: This whole rabbit antiserum was prepared by delipidation and defibrination followed by the addition of buffer salts and preservative. Reactivity is directed against E.coli Host Cell Proteins. Cross-reactivity with other species is likely but has not been determined. Reactivity against homologues from other sources is not known.

Application Details

Tested Applications:	2D-PAGE, ELISA, WB
Application Note:	Anti-HMW Host Cell Proteins Antibody detects over 250 E.coli HMW proteins and has been tested in 2D, western blotting, and ELISA.
Assay Dilutions:	All assays should be optimized by the user. Recommended dilutions (if any) may be listed below.
ELISA:	1:1000 - 1:2000
WB:	1:500 - 1:1000

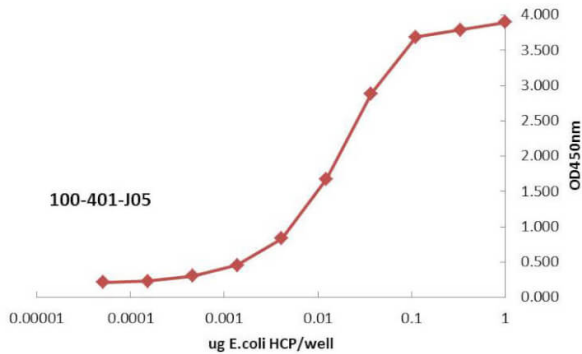
Formulation

Physical State:	Liquid (sterile filtered)
Concentration:	77.5 mg/mL by Refractometry
Buffer:	0.02 M Potassium Phosphate, 0.15 M Sodium Chloride, pH 7.2
Preservative:	0.01% (w/v) Sodium Azide
Stabilizer:	None

Shipping & Handling

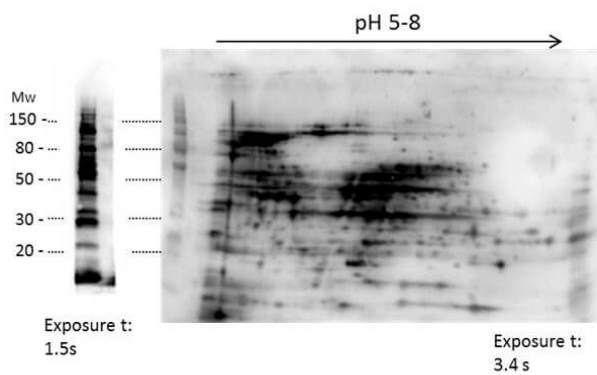
Shipping Condition:	Dry Ice
Storage Condition:	Store HMW Host Cell Proteins Antibody at -20° C prior to opening. Aliquot contents and freeze at -20° C or below for extended storage. Avoid cycles of freezing and thawing. Centrifuge product if not completely clear after standing at room temperature. This product is stable for several weeks at 4° C as an undiluted liquid. Dilute only prior to immediate use.
Expiration:	Expiration date is one (1) year from date of receipt.

Images



ELISA

ELISA of Rabbit anti-High Molecular Weight Host Cell Protein antibody. Antigen: BSA conjugates of HMW HCP. Coating amount: 1 µg per well titrated 1:3 in 1XPBS. Primary antibody: Anti-HMW-HCP antibody at 100 ng/well. Secondary antibody: Peroxidase rabbit secondary antibody at 1:10,000. Substrate: TMB (p/n TMBE-0100) for 30min.



Western Blot

2D Western Blot of anti-E.coli High Molecular Weight Host Cell Protein antibody. Load: 35 µg HMW HCP. Primary antibody: Rabbit anti-HMW-HCP antibody at 1:200 for overnight at 4°C. Secondary antibody: Goat anti-rabbit secondary antibody at 1:10,000 for 30 min at RT. Block: MB-070 for 1 hour at RT.

Disclaimer

This product is for research use only and is not intended for therapeutic or diagnostic applications. Please contact a technical service representative for more information. All products of animal origin manufactured by Rockland Immunochemicals are derived from starting materials of North American origin. Collection was performed in United States Department of Agriculture (USDA) inspected facilities and all materials have been inspected and certified to be free of disease and suitable for exportation. All properties listed are typical characteristics and are not specifications. All suggestions and data are offered in good faith but without guarantee as conditions and methods of use of our products are beyond our control. All claims must be made within 30 days following the date of delivery. The prospective user must determine the suitability of our materials before adopting them on a commercial scale. Suggested uses of our products are not recommendations to use our products in violation of any patent or as a license under any patent of Rockland Immunochemicals, Inc. If you require a commercial license to use this material and do not have one, then return this material, unopened to: Rockland Inc., P.O. BOX 5199, Limerick, Pennsylvania, USA.