



# SZABO SCANDIC

Part of Europa Biosite

## Produktinformation



Forschungsprodukte & Biochemikalien



Zellkultur & Verbrauchsmaterial



Diagnostik & molekulare Diagnostik



Laborgeräte & Service

Weitere Information auf den folgenden Seiten!  
See the following pages for more information!



### Lieferung & Zahlungsart

siehe unsere [Liefer- und Versandbedingungen](#)

### Zuschläge

- Mindermengenzuschlag
- Trockeneiszuschlag
- Gefahrgutzuschlag
- Expressversand

### SZABO-SCANDIC HandelsgmbH

Quellenstraße 110, A-1100 Wien

T. +43(0)1 489 3961-0

F. +43(0)1 489 3961-7

[mail@szabo-scandic.com](mailto:mail@szabo-scandic.com)

[www.szabo-scandic.com](http://www.szabo-scandic.com)

[linkedin.com/company/szaboscandic](https://www.linkedin.com/company/szaboscandic) 

**Datasheet for 100-401-J07****E.coli HCP Antibody****Overview**

<b>Description:</b>	Anti-E.Coli Host Cell Protein (HCP) (RABBIT) Antibody - 100-401-J07
<b>Item No.:</b>	100-401-J07
<b>Size:</b>	100 µL
<b>Applications:</b>	2D-PAGE, ELISA, WB
<b>Reactivity:</b>	E. coli
<b>Host Species:</b>	Rabbit

**Product Details**

<b>Background:</b>	Anti-Host Cell Proteins Antibody recognizes high and low molecular weight protein fractions from E.coli. This antibody has been validated by 2D electrophoresis western blot to assure highest possible coverage of E.coli HCP. Host Cell Proteins are process-related impurities derived from a host cell expression system that may be present in trace amounts in a final drug substance. HCP Antibodies are used to detect impurities in biologically-based therapeutics. Detecting impurities often unseen by 1-D electrophoresis, a 2D electrophoresis western blot analysis delivers more complete insight into the immunocoverage of protein components of the host cell lysate.
<b>Synonyms:</b>	rabbit anti-E.Coli Host Cell Protein antibody, HCP antibody, Anti-HCP, Anti-Host Cell Protein, ECP antibody, Anti-ECP, 2D detection antibody
<b>Host Species:</b>	Rabbit
<b>Clonality:</b>	Polyclonal
<b>Format:</b>	Antiserum

**Target Details**

<b>Reactivity:</b>	E. coli
<b>Immunogen Type:</b>	Native Protein
<b>Immunogen:</b>	Anti-Host Cell Proteins Antibody was prepared blending antibodies that have been separately developed by repeated immunizations with a mixture of high molecular weight (HMW) and a mixture of low molecular weight (LMW) proteins from E.Coli (BL21).

**Purity/Specificity:** E.coli HCP Antibody is directed against high molecular weight and low molecular weight E.coli Host Cell Proteins. This whole rabbit antiserum was prepared by delipidation and defibrination followed by the addition of buffer salts and preservative. The anti-sera reactivity is directed against E.coli Host Cell Proteins. Cross-reactivity with other species is likely but has not been determined. Reactivity against homologues from other sources is not known.

**Relevant Links:** • [100-401-J07 SDS](#)

## Application Details

**Tested Applications:** 2D-PAGE, ELISA, WB

**Application Note:** Anti-Host Cell Proteins Antibody detects over 300 E.coli proteins and has been tested in ELISA, 2D-Page and Western blot.

**Assay Dilutions:** All assays should be optimized by the user. Recommended dilutions (if any) may be listed below.

**ELISA:** 1:1000 - 1:2000

**WB:** 1:500 - 1:1000

## Formulation

**Physical State:** Liquid (sterile filtered)

**Concentration:** 90 mg/mL by Refractometry

**Buffer:** 0.02 M Potassium Phosphate, 0.15 M Sodium Chloride, pH 7.2

**Preservative:** 0.01% (w/v) Sodium Azide

**Stabilizer:** None

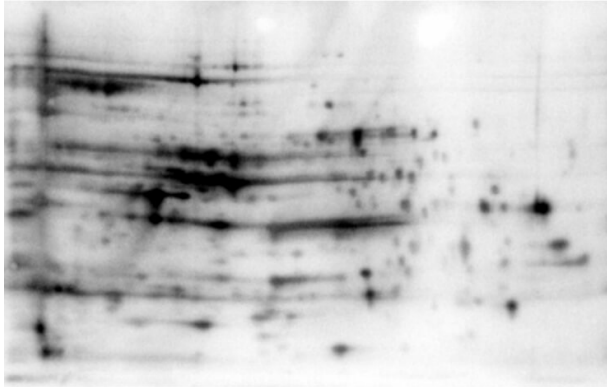
## Shipping & Handling

**Shipping Condition:** Dry Ice

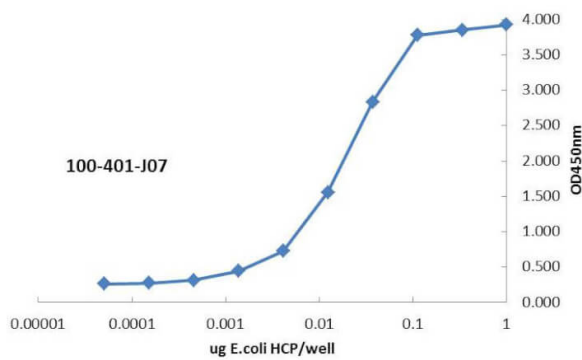
**Storage Condition:** Store Host Cell Proteins Antibody at -20° C prior to opening. Aliquot contents and freeze at -20° C or below for extended storage. Avoid cycles of freezing and thawing. Centrifuge product if not completely clear after standing at room temperature. This product is stable for several weeks at 4° C as an undiluted liquid. Dilute only prior to immediate use.

**Expiration:** Expiration date is one (1) year from date of receipt.

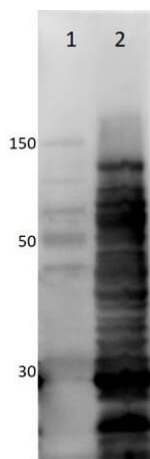
## Images


**Western Blot**

2D Western Blot of anti-E.coli HCP antibody. Load: 35 µg Total HCP. pH: 5-8. Primary antibody: Rabbit anti-HCP antibody at 1:200 for overnight at 4°C. Secondary antibody: Goat anti-rabbit secondary antibody at 1:10,000 for 30 min at RT. Block: MB-070 for 1 hour at RT.


**ELISA**

ELISA of Rabbit anti-Host Cell Protein antibody. Antigen: BSA conjugates of HCP. Coating amount: 1 µg per well titrated 1:3 in 1XPBS. Primary antibody: Anti-HCP antibody at 100 ng/well. Secondary antibody: Peroxidase rabbit secondary antibody at 1:10,000. Substrate: TMB (p/n TMBE-0100) for 30min.


**Western Blot**

Western Blot of Rabbit anti-HCP antibody. Lane 1: Molecular Weight. Lane 2: Total HCP. Load: 10µg per lane. Primary antibody: Rabbit anti-HCP cocktail at 1:1000 for overnight at 4°C. Secondary antibody: Goat anti-rabbit secondary antibody (p/n 611-103-122) at 1:10,000 for 30 min at RT. Block: (p/n MB-070) for 1 hour at RT.

**Disclaimer**

This product is for research use only and is not intended for therapeutic or diagnostic applications. Please contact a technical service representative for more information. All products of animal origin manufactured by Rockland Immunochemicals are derived from starting materials of North American origin. Collection was performed in United States Department of Agriculture (USDA) inspected facilities and all materials have been inspected and certified to be free of disease and suitable for exportation. All properties listed are typical characteristics and are not specifications. All suggestions and data are offered in good faith but without guarantee as conditions and methods of use of our products are beyond our control. All claims must be made within 30 days following the date of delivery. The prospective user must determine the suitability of our materials before adopting them on a commercial scale. Suggested uses of our products are not recommendations to use our products in violation of any patent or as a license under any patent of Rockland Immunochemicals, Inc. If you require a commercial license to use this material and do not have one, then return this material, unopened to: Rockland Inc., P.O. BOX 5199, Limerick, Pennsylvania, USA.