



SZABO SCANDIC

Part of Europa Biosite

Produktinformation



Forschungsprodukte & Biochemikalien



Zellkultur & Verbrauchsmaterial



Diagnostik & molekulare Diagnostik



Laborgeräte & Service

Weitere Information auf den folgenden Seiten!
See the following pages for more information!



Lieferung & Zahlungsart

siehe unsere [Liefer- und Versandbedingungen](#)

Zuschläge

- Mindermengenzuschlag
- Trockeneiszuschlag
- Gefahrgutzuschlag
- Expressversand

SZABO-SCANDIC HandelsgmbH

Quellenstraße 110, A-1100 Wien

T. +43(0)1 489 3961-0

F. +43(0)1 489 3961-7

mail@szabo-scandic.com

www.szabo-scandic.com

[linkedin.com/company/szaboscandic](https://www.linkedin.com/company/szaboscandic) 

Datasheet for 100-401-N93**TET2 Antibody****Overview**

| | |
|----------------------|---|
| Description: | Anti-TET2 (RABBIT) Antibody - 100-401-N93 |
| Item No.: | 100-401-N93 |
| Size: | 100 µL |
| Applications: | WB |
| Reactivity: | Human |
| Host Species: | Rabbit |

Product Details

| | |
|----------------------|--|
| Background: | Tet2 antibody is a dioxygenase enzyme which is associated with the addition of the hydroxyl group to 5-methylcystosine (5mC) to form 5-hydroxymethylcystosine. Tet2 mediates the formation of 5-formylcystosine from 5hmC and subsequently 5fC to 5-carboxylcystosine, and consequently Tet2 plays an active role in catalyzing those conversions which have been suggested as the first step for active mammalian DNA de-methylation. Tet2 enzyme aids in the epigenetic modification of mammalian cystosine bases, ultimately affecting transcriptional regulation. Additionally methylcystosine dioxygenase Tet2 recruits O-GlcNAc transferase OGT enzyme to CpG-rich transcription start sites of the gene, encouraging H2B GlcNAcylation by OGT. Anti-TET2 antibodies are ideal for researchers interested in Epigenetics, Cancer, Chromatin Research and Histone research. |
| Synonyms: | rabbit anti-TET2 Antibody, Tet2 antibody, Methylcystosine dioxygenase TET2, KIAA1546 antibody, myeloproliferative disorder antibody, MPD antibody, hematopoietic cell antibody, TET2 antibody, Tet oncogene 2 antibody, MDS antibody, TET2_HUMAN antibody |
| Host Species: | Rabbit |
| Clonality: | Polyclonal |
| Format: | Antiserum |

Target Details

| | |
|--------------------|-------|
| Gene Name: | TET2 |
| Reactivity: | Human |

| | |
|----------------------------|---|
| Immunogen Type: | Recombinant Protein |
| Immunogen: | TET2 antibody was prepared from whole rabbit serum produced by repeated immunizations with a human TET-2 domain containing the N-terminal 156 amino acids of the protein. |
| Purity/Specificity: | Anti-TET2 Antibody was prepared from whole rabbit antiserum by delipidation and defibrination. The antiserum was further cross-absorbed against MBP by chromatography. It is directed against, and shows specific reactivity for human Tet2 protein. Cross reactivity with Tet1 and Tet3 has not been determined. |
| Relevant Links: | <ul style="list-style-type: none">• UniProtKB - Q6N021• NCBI - NP_001120680.1• GenelD - 54790 |

Application Details

| | |
|-----------------------------|---|
| Tested Applications: | WB |
| Application Note: | Tet2 antibody has been tested by Western Blot. Specific conditions for reactivity should be optimized by the end user. Expect band at ~230kDa and ~150kDa (isoforms). This antibody is suitable for use by ELISA. |
| Assay Dilutions: | All assays should be optimized by the user. Recommended dilutions (if any) may be listed below. |
| ELISA: | 1:50,000 |
| WB: | 1:5000 |

Formulation

| | |
|------------------------|--|
| Physical State: | Liquid (sterile filtered) |
| Concentration: | 72.50 mg/mL by Refractometry |
| Buffer: | 0.02 M Potassium Phosphate, 0.15 M Sodium Chloride, pH 7.2 |
| Preservative: | 0.01% (w/v) Sodium Azide |
| Stabilizer: | None |

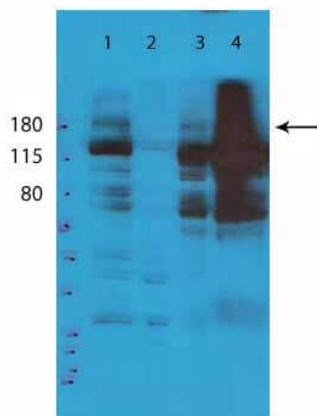
Shipping & Handling

| | |
|----------------------------|---------|
| Shipping Condition: | Dry Ice |
|----------------------------|---------|

Storage Condition: Store vial at -20° C prior to opening. Aliquot contents and freeze at -20° C or below for extended storage. Avoid cycles of freezing and thawing. Centrifuge product if not completely clear after standing at room temperature. This product is stable for several weeks at 4° C as an undiluted liquid. Dilute only prior to immediate use.

Expiration: Expiration date is one (1) year from date of receipt.

Images



Western Blot

Western Blot of Rabbit Anti-Tet2 Antibody. Lane 1: Whole Cell Extract. Lane 2: Cytosolic Extract. Lane 3: Nuclear Extract. Lane 4: Chromatin Fraction. Load: 35 µg per lane of HEK293T. Primary antibody: TET2 antibody at 1:5000 for 5 hours at room temperature. Secondary antibody: HRP rabbit secondary antibody at 1:10,000 for 45 min at RT. Block: 5% BLOTTO overnight at 4°C. Predicted/Observed size: ~230 and ~150kDa. Other band(s): nonspecific.

Disclaimer

This product is for research use only and is not intended for therapeutic or diagnostic applications. Please contact a technical service representative for more information. All products of animal origin manufactured by Rockland Immunochemicals are derived from starting materials of North American origin. Collection was performed in United States Department of Agriculture (USDA) inspected facilities and all materials have been inspected and certified to be free of disease and suitable for exportation. All properties listed are typical characteristics and are not specifications. All suggestions and data are offered in good faith but without guarantee as conditions and methods of use of our products are beyond our control. All claims must be made within 30 days following the date of delivery. The prospective user must determine the suitability of our materials before adopting them on a commercial scale. Suggested uses of our products are not recommendations to use our products in violation of any patent or as a license under any patent of Rockland Immunochemicals, Inc. If you require a commercial license to use this material and do not have one, then return this material, unopened to: Rockland Inc., P.O. BOX 5199, Limerick, Pennsylvania, USA.