



# SZABO SCANDIC

Part of Europa Biosite

## Produktinformation



Forschungsprodukte & Biochemikalien



Zellkultur & Verbrauchsmaterial



Diagnostik & molekulare Diagnostik



Laborgeräte & Service

Weitere Information auf den folgenden Seiten!  
See the following pages for more information!



### Lieferung & Zahlungsart

siehe unsere [Liefer- und Versandbedingungen](#)

### Zuschläge

- Mindermengenzuschlag
- Trockeneiszuschlag
- Gefahrgutzuschlag
- Expressversand

### SZABO-SCANDIC HandelsgmbH

Quellenstraße 110, A-1100 Wien

T. +43(0)1 489 3961-0

F. +43(0)1 489 3961-7

[mail@szabo-scandic.com](mailto:mail@szabo-scandic.com)

[www.szabo-scandic.com](http://www.szabo-scandic.com)

[linkedin.com/company/szaboscandic](https://www.linkedin.com/company/szaboscandic) 

**Datasheet for 100-401-N95S****IFN Induced GTPase-like Protein Antibody****Overview**

<b>Description:</b>	Anti-IFN Induced GTPase-like Protein (RABBIT) Antibody - 100-401-N95S
<b>Item No.:</b>	100-401-N95S
<b>Size:</b>	25 µL
<b>Applications:</b>	ELISA, WB
<b>Reactivity:</b>	Mouse
<b>Host Species:</b>	Rabbit

**Product Details**

<b>Background:</b>	This antibody is designed, produced, and validated as part of a collaboration between Rockland and the National Cancer Institute (NCI). IFN Induced GTPase Like Protein is a novel protein involved in intracellular defense. It is suggested that IFN-induced GTPase may be an indicator for Lupus or other immunogenic abnormalities. Anti-IFN Induced GTPase Like Protein Antibody is ideal for researchers interested in autoimmune disease and apoptosis research.
<b>Synonyms:</b>	rabbit anti-IFN Induced GTPase-like Protein Antibody, interferon-gamma induced, Interferon-gamma-inducible GTPase Ifgga3 protein
<b>Host Species:</b>	Rabbit
<b>Clonality:</b>	Polyclonal
<b>Format:</b>	IgG

**Target Details**

<b>Gene Name:</b>	Gm4841
<b>Reactivity:</b>	Mouse
<b>Immunogen Type:</b>	Conjugated Peptide
<b>Immunogen:</b>	IFN Induced GTPase Like Protein was prepared from whole rabbit serum produced by repeated immunizations with a synthetic peptide corresponding to a N-terminal region of mouse IFN Induced GTPase Like Protein.

**Purity/Specificity:** Anti-IFN Induced GTPase Like Protein Antibody was prepared from monospecific, delipidated and defibrinated antiserum, with addition of sodium azide to 0.01%. A BLAST analysis was used to suggest cross-reactivity with IFN Induced GTPase Like Protein from mouse based on a 100% homology with the immunizing sequence. Reactivity against homologues from other sources is not known.

**Relevant Links:**

- [UniProtKB - E9QAA8](#)
- [NCBI - NP\\_001030031.2](#)
- [GeneID - 225594](#)

## Application Details

**Tested Applications:** ELISA, WB

**Application Note:** Anti-IFN Induced GTPase Like Protein has been tested by ELISA and Western Blot. Expect a band at ~48 kDa by western blotting in the appropriate cell lysate or extract.

**Assay Dilutions:** All assays should be optimized by the user. Recommended dilutions (if any) may be listed below.

**ELISA:** 1:2000 - 1:10,000

**WB:** 1:500-1:1000

## Formulation

**Physical State:** Liquid (sterile filtered)

**Concentration:** 80 mg/mL by Refractometry

**Buffer:** 0.02 M Potassium Phosphate, 0.5 M Sodium Chloride, pH 7.2

**Preservative:** 0.01% (w/v) Sodium Azide

**Stabilizer:** None

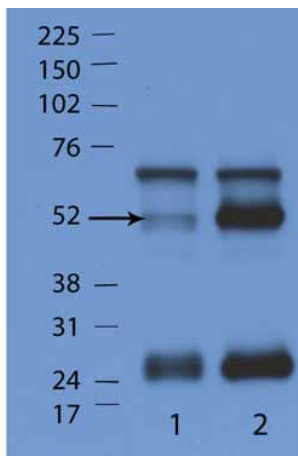
## Shipping & Handling

**Shipping Condition:** Dry Ice

**Storage Condition:** Store vial at -20° C or below prior to opening. This vial contains a relatively low volume of reagent (25 µL). To minimize loss of volume dilute 1:10 by adding 225 µL of the buffer stated above directly to the vial. Recap, mix thoroughly and briefly centrifuge to collect the volume at the bottom of the vial. Use this intermediate dilution when calculating final dilutions as recommended below. Store the vial at -20°C or below after dilution. Avoid cycles of freezing and thawing.

**Expiration:** Expiration date is one (1) year from date of receipt.

## Images



### Western Blot

Western Blot of Rabbit Anti-IFN GTPase antibody. Lane 1: WT mouse spleen lysate. Lane 2: IFN gamma gene KO mouse spleen lysate. Load: 35 µg per lane. Primary antibody: IFN GTPases antibody at 1:1000 for overnight at 4°C. Secondary antibody: IRDye800™ rabbit secondary antibody at 1:10,000 for 45 min at RT. Block: 5% BLOTTO overnight at 4°C. Predicted/Observed size: [KO gene results in chronic and persistent IFN gamma protein in the sera] ~52kDa for IFN GTPases antibody. Other band(s): nonspecific.

## Disclaimer

This product is for research use only and is not intended for therapeutic or diagnostic applications. Please contact a technical service representative for more information. All products of animal origin manufactured by Rockland Immunochemicals are derived from starting materials of North American origin. Collection was performed in United States Department of Agriculture (USDA) inspected facilities and all materials have been inspected and certified to be free of disease and suitable for exportation. All properties listed are typical characteristics and are not specifications. All suggestions and data are offered in good faith but without guarantee as conditions and methods of use of our products are beyond our control. All claims must be made within 30 days following the date of delivery. The prospective user must determine the suitability of our materials before adopting them on a commercial scale. Suggested uses of our products are not recommendations to use our products in violation of any patent or as a license under any patent of Rockland Immunochemicals, Inc. If you require a commercial license to use this material and do not have one, then return this material, unopened to: Rockland Inc., P.O. BOX 5199, Limerick, Pennsylvania, USA.