



SZABO SCANDIC

Part of Europa Biosite

Produktinformation



Forschungsprodukte & Biochemikalien



Zellkultur & Verbrauchsmaterial



Diagnostik & molekulare Diagnostik



Laborgeräte & Service

Weitere Information auf den folgenden Seiten!
See the following pages for more information!



Lieferung & Zahlungsart

siehe unsere [Liefer- und Versandbedingungen](#)

Zuschläge

- Mindermengenzuschlag
- Trockeneiszuschlag
- Gefahrgutzuschlag
- Expressversand

SZABO-SCANDIC HandelsgmbH

Quellenstraße 110, A-1100 Wien

T. +43(0)1 489 3961-0

F. +43(0)1 489 3961-7

mail@szabo-scandic.com

www.szabo-scandic.com

[linkedin.com/company/szaboscandic](https://www.linkedin.com/company/szaboscandic)

Datasheet for 100-401-P00S**ABCB8 Antibody****Overview**

Description:	Anti-ABCB8 (RABBIT) Antibody - 100-401-P00S
Item No.:	100-401-P00S
Size:	25 µL
Applications:	ELISA, WB
Reactivity:	Human
Host Species:	Rabbit

Product Details

Background: This antibody is designed, produced, and validated as part of a collaboration between Rockland and the National Cancer Institute (NCI) and is suitable for Cancer Research and drug resistance. ABCB8 is designed, produced, and validated as part of a collaboration between Rockland and the National Cancer Institute (NCI). It has been found that ABC transporters are involved in multidrug resistance through their ability to control the presence of drugs in cells. Multidrug resistance is currently being looked at in particular reference to cancer that is resistant to treatment. ABCB8 seems to have particularly high resistance rates in renal cancer and cancer of the central nervous system. Another significant aspect of ABCB8 is that it is a mitochondrial transporter. There are very few ABC transporters localized to the mitochondria which implies information about them could be extremely important. ABCB8 may also be localized to other parts of the cell which are yet to be determined. Anti-ABCB8 antibody is ideal for researchers interested in Cancer Research and drug resistance.

Synonyms:	Rabbit anti-ABCB8 antibody, ATP-binding cassette sub-family B member 8 mitochondrial, Mitochondrial ATP-binding cassette 1, M-ABC1, ABCB-8, ABCB
Host Species:	Rabbit
Clonality:	Polyclonal
Format:	IgG

Target Details

Gene Name:	ABCB8
Reactivity:	Human

Immunogen Type:	Conjugated Peptide
Immunogen:	ABCB8 was prepared from whole rabbit serum produced by repeated immunizations with a synthetic peptide corresponding to a internal portion of human ABCB8.
Purity/Specificity:	Anti-ABCB8 Antibody was prepared from monospecific, delipidated and defibrinated antiserum, with addition of sodium azide to 0.01%. A BLAST analysis was used to suggest cross-reactivity with ABCB8 from human, mouse, and rat based on a 100% homology with the immunizing sequence. Reactivity against homologues from other sources is not known. The antibody detects ABCB8 in cell lysates.
Relevant Links:	<ul style="list-style-type: none">• UniProtKB - Q9NUT2• NCBI - NP_009119.2• GeneID - 11194

Application Details

Tested Applications:	ELISA, WB
Application Note:	Anti-ABCB8 antibody has been tested by ELISA and western blotting. Specific conditions for reactivity should be optimized by the end user. Expect band approximately 79.9 kDa in size corresponding to ABCB8 by western blotting in the appropriate cell lysate or extract. This antibody is suitable for use in ELISA.
Assay Dilutions:	All assays should be optimized by the user. Recommended dilutions (if any) may be listed below.
ELISA:	1:20,000-1:50,000
WB:	1:250-1:500

Formulation

Physical State:	Liquid (sterile filtered)
Concentration:	80 mg/mL by Refractometry
Buffer:	0.02 M Potassium Phosphate, 0.15 M Sodium Chloride, pH 7.2
Preservative:	0.01% (w/v) Sodium Azide
Stabilizer:	None

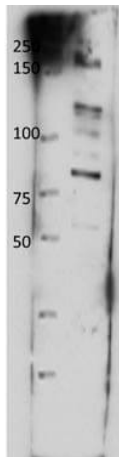
Shipping & Handling

Shipping Condition:	Dry Ice
----------------------------	---------

Storage Condition: Store vial at -20° C or below prior to opening. This vial contains a relatively low volume of reagent (25 µL). To minimize loss of volume dilute 1:10 by adding 225 µL of the buffer stated above directly to the vial. Recap, mix thoroughly and briefly centrifuge to collect the volume at the bottom of the vial. Use this intermediate dilution when calculating final dilutions as recommended below. Store the vial at -20°C or below after dilution. Avoid cycles of freezing and thawing.

Expiration: Expiration date is one (1) year from date of receipt.

Images



Western Blot

Western Blot of Rabbit anti-ABCB8 antibody. Lane 1: Molecular weight marker. Lane 2: B8 crude membrane prep. Load: 10 µg per lane. Primary antibody: ABCB8 antibody at 1:500 for overnight at 4°C. Secondary antibody: IRDye800™ rabbit secondary antibody at 1:10,000 for 45 min at RT. Block: 5% BLOTTO overnight at 4°C. Predicted/Observed size: 80 kDa for ABCB8.

Disclaimer

This product is for research use only and is not intended for therapeutic or diagnostic applications. Please contact a technical service representative for more information. All products of animal origin manufactured by Rockland Immunochemicals are derived from starting materials of North American origin. Collection was performed in United States Department of Agriculture (USDA) inspected facilities and all materials have been inspected and certified to be free of disease and suitable for exportation. All properties listed are typical characteristics and are not specifications. All suggestions and data are offered in good faith but without guarantee as conditions and methods of use of our products are beyond our control. All claims must be made within 30 days following the date of delivery. The prospective user must determine the suitability of our materials before adopting them on a commercial scale. Suggested uses of our products are not recommendations to use our products in violation of any patent or as a license under any patent of Rockland Immunochemicals, Inc. If you require a commercial license to use this material and do not have one, then return this material, unopened to: Rockland Inc., P.O. BOX 5199, Limerick, Pennsylvania, USA.