



# SZABO SCANDIC

Part of Europa Biosite

## Produktinformation



Forschungsprodukte & Biochemikalien



Zellkultur & Verbrauchsmaterial



Diagnostik & molekulare Diagnostik



Laborgeräte & Service

Weitere Information auf den folgenden Seiten!  
See the following pages for more information!



### Lieferung & Zahlungsart

siehe unsere [Liefer- und Versandbedingungen](#)

### Zuschläge

- Mindermengenzuschlag
- Trockeneiszuschlag
- Gefahrgutzuschlag
- Expressversand

### SZABO-SCANDIC HandelsgmbH

Quellenstraße 110, A-1100 Wien

T. +43(0)1 489 3961-0

F. +43(0)1 489 3961-7

[mail@szabo-scandic.com](mailto:mail@szabo-scandic.com)

[www.szabo-scandic.com](http://www.szabo-scandic.com)

[linkedin.com/company/szaboscandic](https://www.linkedin.com/company/szaboscandic) 

**Datasheet for 100-401-P13S****MMTV Antibody****Overview**

<b>Description:</b>	Anti-MMTV (RABBIT) Antibody - 100-401-P13S
<b>Item No.:</b>	100-401-P13S
<b>Size:</b>	25 µL
<b>Applications:</b>	WB
<b>Reactivity:</b>	Virus
<b>Host Species:</b>	Rabbit

**Product Details**

<b>Background:</b>	This antibody is designed, produced, and validated as part of a collaboration between Rockland and the National Cancer Institute (NCI) and is suitable for Cancer, Enzyme, and Viral research. Mouse mammary tumor virus surface protein binds the virus to the receptor of the host cells triggering transmembrane protein refolding. This activates the fusion peptide and the structure coils and repeats positioning the fusion peptide near the C-terminus region. In turn increasing close proximity and then fusion of viral and cell membranes. Anti-MMTV is ideal for researchers interested in Cancer, Viral, and Enzyme research.
<b>Synonyms:</b>	rabbit anti-MMTV Antibody, rabbit anti-mouse mammary tumor virus surface protein antibody, Envelope glycoprotein gp70, Surface protein, Glycoprotein 52, Transmembrane protein, Glycoprotein 36, Mouse mammary tumor virus (strain GR) (MMTV)
<b>Host Species:</b>	Rabbit
<b>Clonality:</b>	Polyclonal
<b>Format:</b>	Antiserum

**Target Details**

<b>Gene Name:</b>	env
<b>Reactivity:</b>	Virus
<b>Immunogen Type:</b>	Native Protein
<b>Immunogen:</b>	MMTV was prepared from whole rabbit serum produced by repeated immunizations with a full length sequence for mouse mammary tumor virus surface protein tagged with His.

**Purity/Specificity:** Mouse mammary tumor virus surface protein antibody was prepared from monospecific, delipidated and defibrinated antiserum, with addition of sodium azide to 0.01% and cross adsorbed with 6X HIS. A BLAST analysis was used to suggest cross-reactivity with MMTV from mouse based on a 100% homology with the immunizing sequence. Reactivity against homologues from other sources is not known.

**Relevant Links:**

- [100-401-P13 SDS](#)
- [UniProtKB - P03374](#)
- [NCBI - M15122](#)

## Application Details

**Tested Applications:** WB

**Application Note:** Anti-MMTV Antibody has been tested for use in western blotting. Specific conditions for reactivity should be optimized by the end user. Expect band approximately 41.2 kDa in size corresponding to MMTV surface protein by western blotting in the appropriate cell lysate or extract.

**Assay Dilutions:** All assays should be optimized by the user. Recommended dilutions (if any) may be listed below.

**ELISA:** 1:10,000-1:20,000

**WB:** 1:1000-1:2000

## Formulation

**Physical State:** Liquid (sterile filtered)

**Concentration:** 66mg/mL by Refractometry

**Buffer:** 0.02 M Potassium Phosphate, 0.15 M Sodium Chloride, pH 7.2

**Preservative:** 0.01% (w/v) Sodium Azide

**Stabilizer:** None

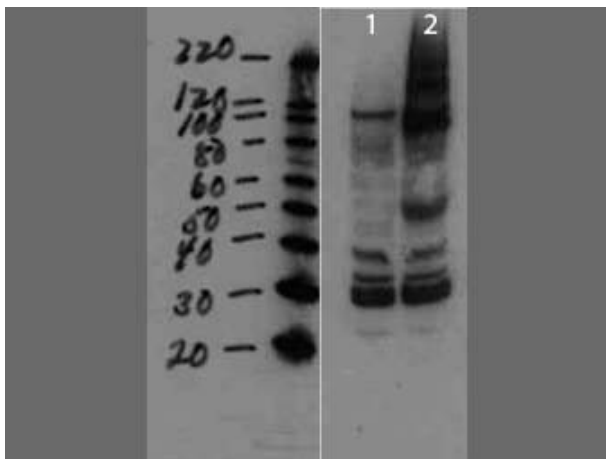
## Shipping & Handling

**Shipping Condition:** Dry Ice

**Storage Condition:** Store vial at -20° C or below prior to opening. This vial contains a relatively low volume of reagent (25 µL). To minimize loss of volume dilute 1:10 by adding 225 µL of the buffer stated above directly to the vial. Recap, mix thoroughly and briefly centrifuge to collect the volume at the bottom of the vial. Use this intermediate dilution when calculating final dilutions as recommended below. Store the vial at -20°C or below after dilution. Avoid cycles of freezing and thawing.

**Expiration:** Expiration date is one (1) year from date of receipt.

## Images



### Western Blot

Western Blot of Rabbit anti-MMTV antibody. Lane 1: cell lysate negative control. Lane 2: cell lysate spiked with purified virus. Load: 10 µg per lane. Primary antibody: Mouse Mammary Tumor Virus Surface Protein antibody at 1:1000 for overnight at 4°C. Secondary antibody: IRDye800™ rabbit secondary antibody at 1:10,000 for 45 min at RT. Block: 5% BLOTTO overnight at 4°C. Predicted/Observed size: ~41.2kDa for MMTV. Other bands: higher bands not unexpected since proteins are made from a larger precursor.

## Disclaimer

This product is for research use only and is not intended for therapeutic or diagnostic applications. Please contact a technical service representative for more information. All products of animal origin manufactured by Rockland Immunochemicals are derived from starting materials of North American origin. Collection was performed in United States Department of Agriculture (USDA) inspected facilities and all materials have been inspected and certified to be free of disease and suitable for exportation. All properties listed are typical characteristics and are not specifications. All suggestions and data are offered in good faith but without guarantee as conditions and methods of use of our products are beyond our control. All claims must be made within 30 days following the date of delivery. The prospective user must determine the suitability of our materials before adopting them on a commercial scale. Suggested uses of our products are not recommendations to use our products in violation of any patent or as a license under any patent of Rockland Immunochemicals, Inc. If you require a commercial license to use this material and do not have one, then return this material, unopened to: Rockland Inc., P.O. BOX 5199, Limerick, Pennsylvania, USA.