



SZABO SCANDIC

Part of Europa Biosite

Produktinformation



Forschungsprodukte & Biochemikalien



Zellkultur & Verbrauchsmaterial



Diagnostik & molekulare Diagnostik



Laborgeräte & Service

Weitere Information auf den folgenden Seiten!
See the following pages for more information!



Lieferung & Zahlungsart

siehe unsere [Liefer- und Versandbedingungen](#)

Zuschläge

- Mindermengenzuschlag
- Trockeneiszuschlag
- Gefahrgutzuschlag
- Expressversand

SZABO-SCANDIC HandelsgmbH

Quellenstraße 110, A-1100 Wien

T. +43(0)1 489 3961-0

F. +43(0)1 489 3961-7

mail@szabo-scandic.com

www.szabo-scandic.com

[linkedin.com/company/szaboscandic](https://www.linkedin.com/company/szaboscandic) 

Datasheet for 100-401-P17S**ORAI1 Antibody****Overview**

Description:	Anti-ORAI1 (RABBIT) Antibody - 100-401-P17S
Item No.:	100-401-P17S
Size:	25 µL
Applications:	WB
Reactivity:	Human
Host Species:	Rabbit

Product Details

Background:	The ORAI-1 gene codes for the calcium release-activated calcium (CRAC) channel subunit in humans. The CRAC channel subunit mediates calcium influx when activated by the calcium sensor, STIM1, following depletion of intracellular calcium stores. CRAC channels are the primary pathway for calcium influx in T-cells and promote the immune response to pathogens through activation of the transcription factor NFAT. Defects in this gene can be a cause of immune dysfunction due to inactivation of T-cells.
Synonyms:	rabbit anti-ORAI-1 Antibody, Calcium release-activated calcium channel protein 1, orai-1, Transmembrane protein 142A, ORAI1, CRACM1, TMEM142A
Host Species:	Rabbit
Clonality:	Polyclonal
Format:	IgG

Target Details

Gene Name:	ORAI1
Reactivity:	Human
Immunogen Type:	Recombinant Protein
Immunogen:	This whole rabbit serum was prepared by repeated immunizations with a recombinant fusion protein.

Purity/Specificity: Anti-ORAI-1 antibody is directed against the human ORAI-1. The product was prepared from monospecific antiserum by delipidation and defibrination. The antiserum was further cross-absorbed against MBP by chromatography. Cross-reactivity with ORAI1 from other sources have not been determined.

Relevant Links:

- [GeneID - 84876](#)
- [NCBI - NP_116179.2](#)
- [UniProtKB - Q96D31](#)

Application Details

Tested Applications: WB

Application Note: Anti-ORAI-1 has been tested for use in western blotting. Specific conditions for reactivity should be optimized by the end user. Expect bands approximately 32.7 kDa by western blotting in the appropriate cell lysate or extract.

Assay Dilutions: All assays should be optimized by the user. Recommended dilutions (if any) may be listed below.

WB: 1:1000

Formulation

Physical State: Liquid (sterile filtered)

Concentration: 45 mg/mL

Buffer: 0.01 M Sodium Phosphate, 0.15 M Sodium Chloride, pH 7.2

Preservative: 0.01% (w/v) Sodium Azide

Stabilizer: None

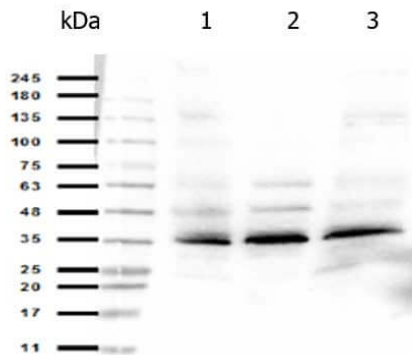
Shipping & Handling

Shipping Condition: Dry Ice

Storage Condition: Store vial at -20° C or below prior to opening. This vial contains a relatively low volume of reagent (25 µL). To minimize loss of volume dilute 1:10 by adding 225 µL of the buffer stated above directly to the vial. Recap, mix thoroughly and briefly centrifuge to collect the volume at the bottom of the vial. Use this intermediate dilution when calculating final dilutions as recommended below. Store the vial at -20°C or below after dilution. Avoid cycles of freezing and thawing.

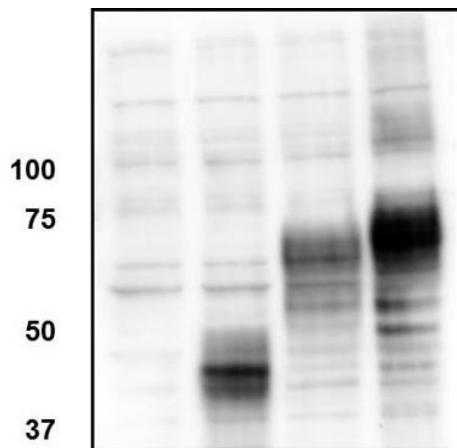
Expiration: Expiration date is one (1) year from date of receipt.

Images



Western Blot

Western Blot of Rabbit anti-ORAI-1 antibody. Marker: Opal Pre-stained ladder (p/n MB-210-0500). Lane 1: MOLT-4 WCL (p/n W09-001-GK2). Lane 2: MDA-MB-435 WCL (p/n W09-001-A39). Lane 3: Jurkat WCL (p/n W09-001-370). Load: 35 µg per lane. Primary antibody: ORAI-1 antibody at 1:1,000 for 3 hrs at RT. Secondary antibody: Peroxidase rabbit secondary antibody (p/n 611-103-122) at 1:30,000 for 60 min at RT. Blocking Buffer: 1% Casein-TTBS for 30 min at RT. Predicted/Observed size: 32 kDa for ORAI-1.



Western Blot

Western Blot of Rabbit anti-ORAI-1 antibody. Lane 1: HEK293 lysate. Lane 2: HEK293/ORAI-1 His transfected. Lane 3: HEK293/ORAI-1 CFP transfected. Lane 4: HEK293/ORAI-1 mCherry transfected. Load: 20 µg per lane. Primary antibody: ORAI1 antibody at 1:1000 for overnight at 4°C. Secondary antibody: Goat Anti-rabbit secondary antibody at 1:10,000 for 45 min at RT. Block: 2.5% BLOTTO overnight at 4°C. Predicted/Observed size: 32.5kDa for ORAI-1 in lane 2.

Disclaimer

This product is for research use only and is not intended for therapeutic or diagnostic applications. Please contact a technical service representative for more information. All products of animal origin manufactured by Rockland Immunochemicals are derived from starting materials of North American origin. Collection was performed in United States Department of Agriculture (USDA) inspected facilities and all materials have been inspected and certified to be free of disease and suitable for exportation. All properties listed are typical characteristics and are not specifications. All suggestions and data are offered in good faith but without guarantee as conditions and methods of use of our products are beyond our control. All claims must be made within 30 days following the date of delivery. The prospective user must determine the suitability of our materials before adopting them on a commercial scale. Suggested uses of our products are not recommendations to use our products in violation of any patent or as a license under any patent of Rockland Immunochemicals, Inc. If you require a commercial license to use this material and do not have one, then return this material, unopened to: Rockland Inc., P.O. BOX 5199, Limerick, Pennsylvania, USA.