



# SZABO SCANDIC

Part of Europa Biosite

## Produktinformation



Forschungsprodukte & Biochemikalien



Zellkultur & Verbrauchsmaterial



Diagnostik & molekulare Diagnostik



Laborgeräte & Service

Weitere Information auf den folgenden Seiten!  
See the following pages for more information!



### Lieferung & Zahlungsart

siehe unsere [Liefer- und Versandbedingungen](#)

### Zuschläge

- Mindermengenzuschlag
- Trockeneiszuschlag
- Gefahrgutzuschlag
- Expressversand

### SZABO-SCANDIC HandelsgmbH

Quellenstraße 110, A-1100 Wien

T. +43(0)1 489 3961-0

F. +43(0)1 489 3961-7

[mail@szabo-scandic.com](mailto:mail@szabo-scandic.com)

[www.szabo-scandic.com](http://www.szabo-scandic.com)

[linkedin.com/company/szaboscandic](https://www.linkedin.com/company/szaboscandic) 

**Datasheet for 100-401-V82****SETD8 Antibody****Overview**

<b>Description:</b>	Anti-SETD8 (RABBIT) Antibody - 100-401-V82
<b>Item No.:</b>	100-401-V82
<b>Size:</b>	100 µL
<b>Applications:</b>	WB
<b>Reactivity:</b>	Human, Mouse
<b>Host Species:</b>	Rabbit

**Product Details**

<b>Background:</b>	SETD8 is a histone methyl transferase that specifically monomethylates 'Lys-20' of histone H4. This histone modification represents a specific tag for epigenetic transcriptional repression and is enriched during mitosis. SETD8 may also play a role in maintaining silent chromatin by preventing the acetylation of the H4 tail. Anti-SETD8 Antibody is ideal for research in Gene Expression, Epigenetics and Chromatin Remodeling.
<b>Synonyms:</b>	N-lysine methyltransferase SETD8, H4-K20-HMTase SETD8, Histone-lysine N-methyltransferase SETD8, Lysine N-methyltransferase 5A, PR/SET domain-containing protein 07, SET domain-containing protein 8, PR-Set7, PR/SET07
<b>Host Species:</b>	Rabbit
<b>Clonality:</b>	Polyclonal
<b>Format:</b>	Antiserum

**Target Details**

<b>Gene Name:</b>	KMT5A
<b>Reactivity:</b>	Human, Mouse
<b>Immunogen Type:</b>	Recombinant Protein
<b>Immunogen:</b>	Anti-SETD8 Antibody was produced in rabbits by repeated immunizations of the full length human SETD8 protein containing a Flag-tagged N-terminus and a His-tagged C terminus.

**Purity/Specificity:** Anti-SETD8 Antibody is monospecific antiserum processed by delipidation and defibrination followed by sterile filtration. Cross reactivity with SETD8 from species other than human and mouse not tested.

**Relevant Links:**

- [UniProtKB - Q9NQR1](#)
- [GeneID - 387893](#)
- [NCBI - NP\\_065115.3](#)

## Application Details

**Tested Applications:** WB

**Application Note:** Anti-SETD8 Antibody has been tested by western blots. Specific conditions for reactivity should be optimized by the end user. Expect a band approximately 40 kDa in the appropriate cell lysate or extract.

**Assay Dilutions:** All assays should be optimized by the user. Recommended dilutions (if any) may be listed below.

**WB:** 1:1,000

## Formulation

**Physical State:** Liquid (sterile filtered)

**Concentration:** neat

**Buffer:** None

**Preservative:** 0.05% (w/v) Sodium Azide

**Stabilizer:** None

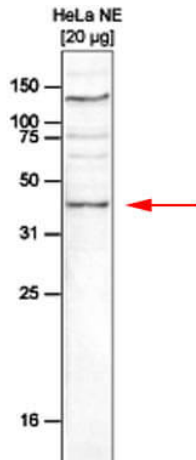
## Shipping & Handling

**Shipping Condition:** Dry Ice

**Storage Condition:** Store vial at -20° C prior to opening. Aliquot contents and freeze at -20° C or below for extended storage. Avoid cycles of freezing and thawing. Centrifuge product if not completely clear after standing at room temperature. This product is stable for several weeks at 4° C as an undiluted liquid. Dilute only prior to immediate use.

**Expiration:** Expiration date is one (1) year from date of receipt.

## Images



### Western Blot

Western Blot results of Rabbit anti-SETD8 antibody. Lane 1: HeLa nuclear extracts cells. Load: 20 µg. Primary antibody: SETD8 antibody at 1:1000 for overnight at 4°C. Secondary antibody: Goat anti-rabbit secondary HRP antibody at 1:10,000 for 45 min at RT. Block: 5% BLOTTO/TBS-Tween overnight at 4°C.

## Disclaimer

This product is for research use only and is not intended for therapeutic or diagnostic applications. Please contact a technical service representative for more information. All products of animal origin manufactured by Rockland Immunochemicals are derived from starting materials of North American origin. Collection was performed in United States Department of Agriculture (USDA) inspected facilities and all materials have been inspected and certified to be free of disease and suitable for exportation. All properties listed are typical characteristics and are not specifications. All suggestions and data are offered in good faith but without guarantee as conditions and methods of use of our products are beyond our control. All claims must be made within 30 days following the date of delivery. The prospective user must determine the suitability of our materials before adopting them on a commercial scale. Suggested uses of our products are not recommendations to use our products in violation of any patent or as a license under any patent of Rockland Immunochemicals, Inc. If you require a commercial license to use this material and do not have one, then return this material, unopened to: Rockland Inc., P.O. BOX 5199, Limerick, Pennsylvania, USA.