



# SZABO SCANDIC

Part of Europa Biosite

## Produktinformation



Forschungsprodukte & Biochemikalien



Zellkultur & Verbrauchsmaterial



Diagnostik & molekulare Diagnostik



Laborgeräte & Service

Weitere Information auf den folgenden Seiten!  
See the following pages for more information!



### Lieferung & Zahlungsart

siehe unsere [Liefer- und Versandbedingungen](#)

### Zuschläge

- Mindermengenzuschlag
- Trockeneiszuschlag
- Gefahrgutzuschlag
- Expressversand

### SZABO-SCANDIC HandelsgmbH

Quellenstraße 110, A-1100 Wien

T. +43(0)1 489 3961-0

F. +43(0)1 489 3961-7

[mail@szabo-scandic.com](mailto:mail@szabo-scandic.com)

[www.szabo-scandic.com](http://www.szabo-scandic.com)

[linkedin.com/company/szaboscandic](https://www.linkedin.com/company/szaboscandic) 

## Datasheet for 100-401-V90

# JMJD2B Antibody

### Overview

<b>Description:</b>	Anti-JMJD2b (RABBIT) Antibody - 100-401-V90
<b>Item No.:</b>	100-401-V90
<b>Size:</b>	100 µL
<b>Applications:</b>	ELISA, IF, WB
<b>Reactivity:</b>	Human
<b>Host Species:</b>	Rabbit

### Product Details

<b>Background:</b>	JMJD2b, belongs to the JMJD2 family of histone demethylases which play an important role in the establishment of the histone code. JMJD2b specifically demethylates the trimethylated K9 of histone H3. It is not able to demethylate K4, K27 and K36 of histone H3, nor K20 of histone H4. Anti-JMJD2b Antibody is ideal for research in Epigenetics and Chromatin Remodeling.
<b>Synonyms:</b>	Lysine-specific demethylase 4B, JmjC domain-containing histone demethylation protein 3B, Jumonji domain-containing protein 2B
<b>Host Species:</b>	Rabbit
<b>Clonality:</b>	Polyclonal
<b>Format:</b>	Antiserum

### Target Details

<b>Gene Name:</b>	KDM4B
<b>Reactivity:</b>	Human
<b>Immunogen Type:</b>	Conjugated Peptide
<b>Immunogen:</b>	Anti-JMJD2B Antibody was produced in rabbits by repeated immunizations with a synthetic peptide containing an amino acid sequence from the internal part of human JMJD2b.
<b>Purity/Specificity:</b>	Anti-JMJD2b Antibody is monospecific antiserum processed by delipidation and defibrination followed by sterile filtration. Cross reactivity with JMJD2b from other species not tested.
<b>Relevant Links:</b>	<ul style="list-style-type: none"><li>• <a href="#">UniProtKB - O94953</a></li></ul>

- [GeneID - 23030](#)
- [NCBI - NP\\_055830.1](#)

## Application Details

<b>Tested Applications:</b>	ELISA, IF, WB
<b>Application Note:</b>	Anti-JMJD2B Antibody has been tested by ELISA, Immunofluorescence and Western Blots. Specific conditions for reactivity should be optimized by the end user. Expect a band approximately 120 kDa in the appropriate cell lysate or extract.
<b>Assay Dilutions:</b>	All assays should be optimized by the user. Recommended dilutions (if any) may be listed below.
<b>ELISA:</b>	1:200
<b>IF:</b>	1:200
<b>WB:</b>	1:1,000

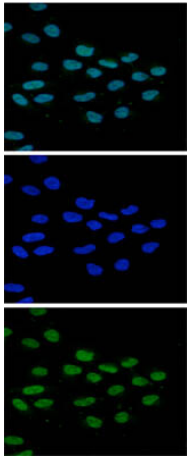
## Formulation

<b>Physical State:</b>	Liquid (sterile filtered)
<b>Concentration:</b>	neat
<b>Buffer:</b>	None
<b>Preservative:</b>	0.05% (w/v) Sodium Azide
<b>Stabilizer:</b>	None

## Shipping & Handling

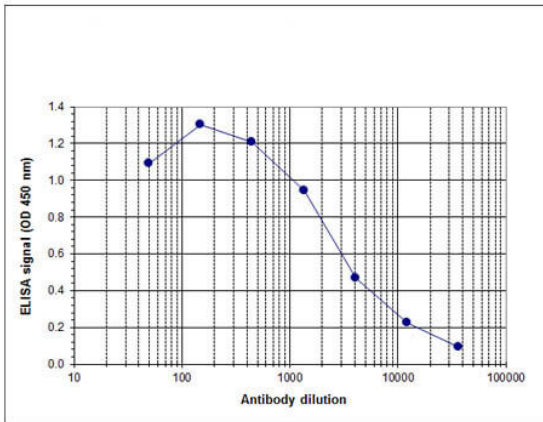
<b>Shipping Condition:</b>	Dry Ice
<b>Storage Condition:</b>	Store vial at -20° C prior to opening. Aliquot contents and freeze at -20° C or below for extended storage. Avoid cycles of freezing and thawing. Centrifuge product if not completely clear after standing at room temperature. This product is stable for several weeks at 4° C as an undiluted liquid. Dilute only prior to immediate use.
<b>Expiration:</b>	Expiration date is one (1) year from date of receipt.

## Images



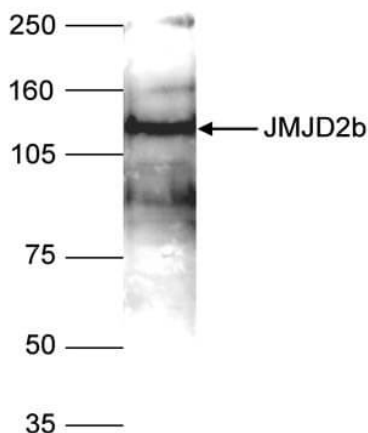
### Immunofluorescence Microscopy

Immunofluorescence Microscopy results of Rabbit anti-JMJD2b antibody. Tissue: HeLa cells. Fixation: 4% formaldehyde for 10' and blocked with PBS/TX-100 containing 5% normal goat serum and 1% BSA. Antigen retrieval: not required. Primary antibody: JMJD2b antibody at 1:200 for 1 h at RT. Secondary antibody: Alexa488 rabbit secondary antibody at 1:10,000 for 45 min at RT. Localization: JMJD2b is nuclear and occasionally cytoplasmic. Staining: JMJD2b as green fluorescent signal with DAPI (blue) nuclear counterstain.



### ELISA

ELISA results of Rabbit anti-JMJD2b antibody. Antigen: BSA conjugated JMJD2b. Coating amount: 0.1 µg per well. Dilution series: serial dilution. Estimated Antibody Titer to be 1:3,000. Substrate: TMB (p/n TMBE-1000).



### Western Blot

Western Blot results of Rabbit anti-JMJD2b antibody. Lane 1: HeLa nuclear extracts cells. Load: 40 µg per lane. Primary antibody: JMJD2b antibody at 1:1000 for overnight at 4°C. Secondary antibody: goat anti-rabbit HRP secondary antibody at 1:10,000 for 45 min at RT. Block: 5% BLOTTO/TBS-Tween overnight at 4°C.

### Disclaimer

This product is for research use only and is not intended for therapeutic or diagnostic applications. Please contact a technical service representative for more information. All products of animal origin manufactured by Rockland Immunochemicals are derived from starting materials of North American origin. Collection was performed in United States Department of Agriculture (USDA) inspected facilities and all materials have been inspected and certified to be free of disease and suitable for exportation. All properties listed are typical characteristics and are not specifications. All suggestions and data are offered in good faith but without guarantee as conditions and methods of use of our products are beyond our control. All claims must be made within 30 days following the date of delivery. The prospective user must determine the suitability of our materials before adopting them on a commercial scale. Suggested uses of our products are not recommendations to use our products in violation of any patent or as a license under any patent of Rockland Immunochemicals, Inc. If you require a commercial license to use this material and do not have one, then return this material, unopened to: Rockland Inc., P.O. BOX 5199, Limerick, Pennsylvania, USA.