



SZABO SCANDIC

Part of Europa Biosite

Produktinformation



Forschungsprodukte & Biochemikalien



Zellkultur & Verbrauchsmaterial



Diagnostik & molekulare Diagnostik



Laborgeräte & Service

Weitere Information auf den folgenden Seiten!
See the following pages for more information!



Lieferung & Zahlungsart

siehe unsere [Liefer- und Versandbedingungen](#)

Zuschläge

- Mindermengenzuschlag
- Trockeneiszuschlag
- Gefahrgutzuschlag
- Expressversand

SZABO-SCANDIC HandelsgmbH

Quellenstraße 110, A-1100 Wien

T. +43(0)1 489 3961-0

F. +43(0)1 489 3961-7

mail@szabo-scandic.com

www.szabo-scandic.com

[linkedin.com/company/szaboscandic](https://www.linkedin.com/company/szaboscandic) 

Datasheet for 100-401-V92**Jarid1b Antibody****Overview**

Description:	Anti-JARID1B (RABBIT) Antibody - 100-401-V92
Item No.:	100-401-V92
Size:	100 µL
Applications:	ELISA, WB
Reactivity:	Mouse
Host Species:	Rabbit

Product Details

Background:	JARID1B is a histone demethylase which specifically demethylates mono-, di, and trimethylated lysine 4 of histone H3. It acts as a transcriptional repressor for the tumor suppressor genes BRCA1 and HOXA5 and has been associated with breast cancer development. In contrast, in melanoma JARID1B itself may function as a tumor suppressor. Anti-Jarid1b Antibody is ideal for research in Epigenetics, Chromatin Remodeling and Cancer.
Synonyms:	Lysine-specific demethylase 5B, Histone demethylase JARID1B, Jumonji/ARID domain-containing protein 1B, PLU-1
Host Species:	Rabbit
Clonality:	Polyclonal
Format:	Antiserum

Target Details

Gene Name:	Kdm5b
Reactivity:	Mouse
Immunogen Type:	Conjugated Peptide
Immunogen:	Anti-Jarid1b Antibody was produced in rabbits by repeated immunizations with a synthetic peptide containing an amino acid sequence from the internal part of mouse Jarid1b.
Purity/Specificity:	Anti-Jarid1b Antibody is monospecific antiserum processed by delipidation and defibrination followed by sterile filtration. Cross reactivity with Jarid1b from other species not tested.

Relevant Links:	<ul style="list-style-type: none">• UniProtKB - Q80Y84• GeneID - 10765• NCBI - NP_006609.3
------------------------	--

Application Details

Tested Applications:	ELISA, WB
Application Note:	Anti-Jarid1b Antibody has been tested by ELISA and Western Blots. Specific conditions for reactivity should be optimized by the end user. Expect a band approximately 175 kDa in the appropriate cell lysate or extract.
Assay Dilutions:	All assays should be optimized by the user. Recommended dilutions (if any) may be listed below.
ELISA:	1:100 - 1:200
WB:	1:500

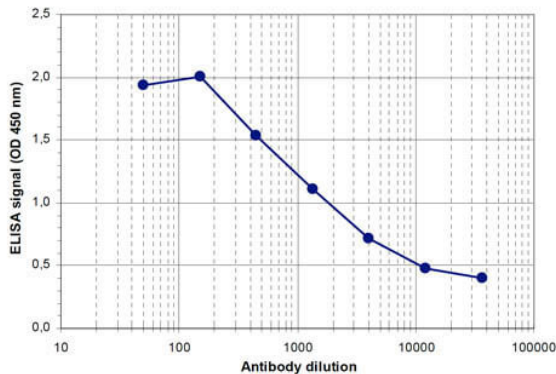
Formulation

Physical State:	Liquid (sterile filtered)
Concentration:	neat
Buffer:	None
Preservative:	0.05% (w/v) Sodium Azide
Stabilizer:	None

Shipping & Handling

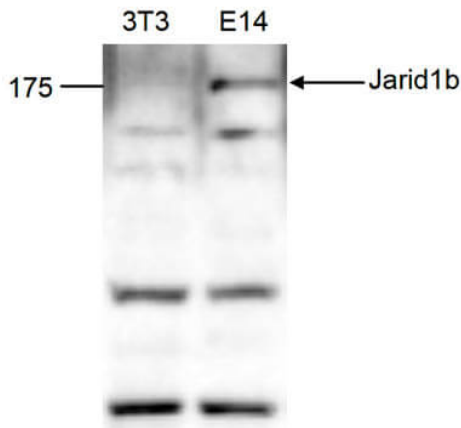
Shipping Condition:	Dry Ice
Storage Condition:	Store vial at -20° C prior to opening. Aliquot contents and freeze at -20° C or below for extended storage. Avoid cycles of freezing and thawing. Centrifuge product if not completely clear after standing at room temperature. This product is stable for several weeks at 4° C as an undiluted liquid. Dilute only prior to immediate use.
Expiration:	Expiration date is one (1) year from date of receipt.

Images



ELISA

ELISA results of Rabbit anti-Jarid1b antibody. Antigen: BSA conjugated Jarid1b. Coating amount: 0.1 µg per well. Dilution series: serial dilution. Estimated Antibody Titer to be 1:2,200. Substrate: TMB (p/n TMBE-1000).



Western Blot

Western Blot results of Rabbit anti-Jarid1b antibody. Lane 1: NIH3T3 cell lysates. Lane 2: embryonic stem cell E14Tg2a lysates. Load: 40 µg per lane. Primary antibody: Jarid1b antibody at 1:500 for overnight at 4°C. Secondary antibody: goat anti-rabbit HRP secondary antibody at 1:10,000 for 45 min at RT. Block: BSA/PBS-Tween overnight at 4°C. Predicted: 179kDa.

Disclaimer

This product is for research use only and is not intended for therapeutic or diagnostic applications. Please contact a technical service representative for more information. All products of animal origin manufactured by Rockland Immunochemicals are derived from starting materials of North American origin. Collection was performed in United States Department of Agriculture (USDA) inspected facilities and all materials have been inspected and certified to be free of disease and suitable for exportation. All properties listed are typical characteristics and are not specifications. All suggestions and data are offered in good faith but without guarantee as conditions and methods of use of our products are beyond our control. All claims must be made within 30 days following the date of delivery. The prospective user must determine the suitability of our materials before adopting them on a commercial scale. Suggested uses of our products are not recommendations to use our products in violation of any patent or as a license under any patent of Rockland Immunochemicals, Inc. If you require a commercial license to use this material and do not have one, then return this material, unopened to: Rockland Inc., P.O. BOX 5199, Limerick, Pennsylvania, USA.