



SZABO SCANDIC

Part of Europa Biosite

Produktinformation



Forschungsprodukte & Biochemikalien



Zellkultur & Verbrauchsmaterial



Diagnostik & molekulare Diagnostik



Laborgeräte & Service

Weitere Information auf den folgenden Seiten!
See the following pages for more information!



Lieferung & Zahlungsart

siehe unsere [Liefer- und Versandbedingungen](#)

Zuschläge

- Mindermengenzuschlag
- Trockeneiszuschlag
- Gefahrgutzuschlag
- Expressversand

SZABO-SCANDIC HandelsgmbH

Quellenstraße 110, A-1100 Wien

T. +43(0)1 489 3961-0

F. +43(0)1 489 3961-7

mail@szabo-scandic.com

www.szabo-scandic.com

[linkedin.com/company/szaboscandic](https://www.linkedin.com/company/szaboscandic) 

Datasheet for 100-401-V93**TASP1 Antibody****Overview**

Description:	Anti-TASP1 (RABBIT) Antibody - 100-401-V93
Item No.:	100-401-V93
Size:	100 µL
Applications:	ELISA, WB
Reactivity:	Human
Host Species:	Rabbit

Product Details

Background:	TASP1 is an endopeptidase which cleaves specific substrates after an aspartate residue. It is required for the posttranslational processing of MLL, a histone methyl transferase which is essential for the maintenance of HOX gene expression and for the transcription factor TFIIA. Therefore, TASP1 may have an important function in the regulation of gene transcription and embryonic development. Anti-TASP1 Antibody is ideal for research in Cell Differentiation and Development, Gene Expression and Epigenetics.
Synonyms:	Threonine aspartase 1, Taspase-1
Host Species:	Rabbit
Clonality:	Polyclonal
Format:	Antiserum

Target Details

Gene Name:	TASP1
Reactivity:	Human
Immunogen Type:	Conjugated Peptide
Immunogen:	Anti-TASP1 Antibody was produced in rabbits by repeated immunizations with three different synthetic peptides of human TASP1: two containing an amino acid sequence from the N-terminal region of the protein and one containing an amino acid sequence from the internal region of the protein.

Purity/Specificity: Anti-TASP1 Antibody is monospecific antiserum processed by delipidation and defibrination followed by sterile filtration. Cross reactivity with TASP1 from other species not tested.

Relevant Links:

- [UniProtKB - Q9H6P5](#)
- [GeneID - 55617](#)
- [NCBI - NP_060184.2](#)

Application Details

Tested Applications: ELISA, WB

Application Note: Anti-TASP1 Antibody has been tested by ELISA and Western Blots. Specific conditions for reactivity should be optimized by the end user. Expect a band approximately 44.5 kDa in the appropriate cell lysate or extract.

Assay Dilutions: All assays should be optimized by the user. Recommended dilutions (if any) may be listed below.

ELISA: 1:1,000

WB: 1:500

Formulation

Physical State: Liquid (sterile filtered)

Concentration: neat

Buffer: None

Preservative: 0.05% (w/v) Sodium Azide

Stabilizer: None

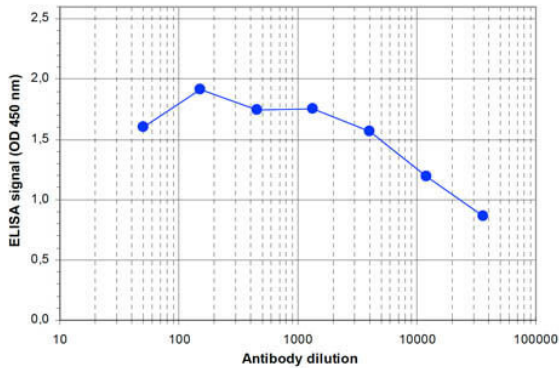
Shipping & Handling

Shipping Condition: Dry Ice

Storage Condition: Store vial at -20° C prior to opening. Aliquot contents and freeze at -20° C or below for extended storage. Avoid cycles of freezing and thawing. Centrifuge product if not completely clear after standing at room temperature. This product is stable for several weeks at 4° C as an undiluted liquid. Dilute only prior to immediate use.

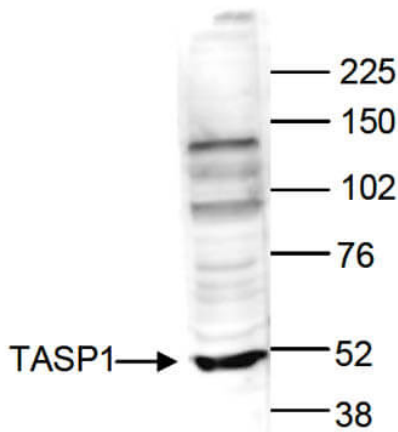
Expiration: Expiration date is one (1) year from date of receipt.

Images



ELISA

ELISA results of Rabbit anti-TASP1 antibody. Antigen: BSA conjugated TASP1. Coating amount: 0.1 µg per well. Dilution series: serial dilution. Estimated Antibody Titer to be 1:43,500. Substrate: TMB (p/n TMBE-1000).



Western Blot

Western Blot results of Rabbit anti-TASP1 antibody. Lane 1: HeLa nuclear extract cells. Load: 40 µg per lane. Primary antibody: TASP1 antibody at 1:500 for overnight at 4°C. Secondary antibody: goat anti-rabbit HRP secondary antibody at 1:10,000 for 45 min at RT. Block: 5% Blotto/TBS-Tween overnight at 4°C. Predicted: 44.5kDa.

Disclaimer

This product is for research use only and is not intended for therapeutic or diagnostic applications. Please contact a technical service representative for more information. All products of animal origin manufactured by Rockland Immunochemicals are derived from starting materials of North American origin. Collection was performed in United States Department of Agriculture (USDA) inspected facilities and all materials have been inspected and certified to be free of disease and suitable for exportation. All properties listed are typical characteristics and are not specifications. All suggestions and data are offered in good faith but without guarantee as conditions and methods of use of our products are beyond our control. All claims must be made within 30 days following the date of delivery. The prospective user must determine the suitability of our materials before adopting them on a commercial scale. Suggested uses of our products are not recommendations to use our products in violation of any patent or as a license under any patent of Rockland Immunochemicals, Inc. If you require a commercial license to use this material and do not have one, then return this material, unopened to: Rockland Inc., P.O. BOX 5199, Limerick, Pennsylvania, USA.