



SZABO SCANDIC

Part of Europa Biosite

Produktinformation



Forschungsprodukte & Biochemikalien



Zellkultur & Verbrauchsmaterial



Diagnostik & molekulare Diagnostik



Laborgeräte & Service

Weitere Information auf den folgenden Seiten!
See the following pages for more information!



Lieferung & Zahlungsart

siehe unsere [Liefer- und Versandbedingungen](#)

Zuschläge

- Mindermengenzuschlag
- Trockeneiszuschlag
- Gefahrgutzuschlag
- Expressversand

SZABO-SCANDIC HandelsgmbH

Quellenstraße 110, A-1100 Wien

T. +43(0)1 489 3961-0

F. +43(0)1 489 3961-7

mail@szabo-scandic.com

www.szabo-scandic.com

[linkedin.com/company/szaboscandic](https://www.linkedin.com/company/szaboscandic) 

Datasheet for 100-401-V94**Setd1a Antibody****Overview**

Description:	Anti-SETD1A (RABBIT) Antibody - 100-401-V94
Item No.:	100-401-V94
Size:	100 µL
Applications:	ELISA, WB
Reactivity:	Human, Mouse
Host Species:	Rabbit

Product Details

Background:	SETD1A is a component of the SET1 histone methyltransferase (HMT) complex. This complex specifically methylates lysine 4 of histone H3, but only if the neighboring lysine 9 residue is not yet methylated. Methylation of H3K4 represents a specific tag for epigenetic transcriptional activation. SETD1A shows a non-overlapping localization with SETD1B, suggesting that both proteins play a specific role in the epigenetic control of chromatin structure and gene expression. Anti-Setd1a Antibody is ideal for research in Epigenetics and Gene Expression.
Synonyms:	Histone-lysine N-methyltransferase SETD1A, Lysine N-methyltransferase 2F, SET domain-containing protein 1A, hSET1A, Set1/Ash2 histone methyltransferase complex subunit SET1
Host Species:	Rabbit
Clonality:	Polyclonal
Format:	Antiserum

Target Details

Gene Name:	Setd1a
Reactivity:	Human, Mouse
Immunogen Type:	Conjugated Peptide
Immunogen:	Anti-Setd1a Antibody was produced in rabbits by repeated immunizations with three different synthetic peptides of mouse Setd1a: two containing an amino acid sequence from the N-terminal region of the protein and one containing an amino acid sequence from the internal region of the protein.

Purity/Specificity: Anti-Setd1a Antibody is monospecific antiserum processed by delipidation and defibrination followed by sterile filtration. Cross reactivity with Setd1a from other species not tested.

Relevant Links:

- [UniProtKB - E9PYH6](#)
- [GeneID - 9739](#)
- [NCBI - NP_055527.1](#)

Application Details

Tested Applications: ELISA, WB

Application Note: Anti-Setd1a Antibody has been tested by ELISA and Western Blots. Specific conditions for reactivity should be optimized by the end user. Expect a band approximately 186 kDa in the appropriate cell lysate or extract.

Assay Dilutions: All assays should be optimized by the user. Recommended dilutions (if any) may be listed below.

ELISA: 1:100

WB: 1:500

Formulation

Physical State: Liquid (sterile filtered)

Concentration: neat

Buffer: None

Preservative: 0.05% (w/v) Sodium Azide

Stabilizer: None

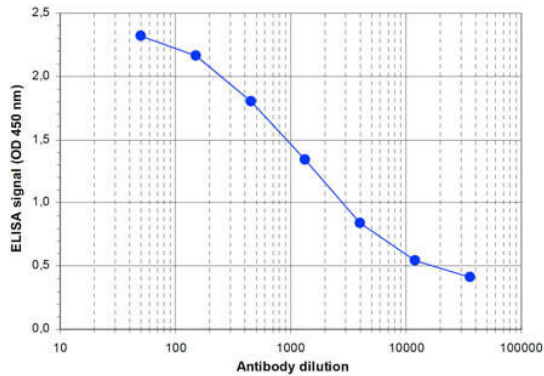
Shipping & Handling

Shipping Condition: Dry Ice

Storage Condition: Store vial at -20° C prior to opening. Aliquot contents and freeze at -20° C or below for extended storage. Avoid cycles of freezing and thawing. Centrifuge product if not completely clear after standing at room temperature. This product is stable for several weeks at 4° C as an undiluted liquid. Dilute only prior to immediate use.

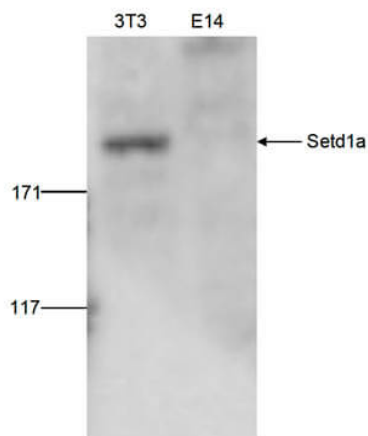
Expiration: Expiration date is one (1) year from date of receipt.

Images



ELISA

ELISA results of Rabbit anti-Setd1a antibody. Antigen: BSA conjugated Setd1a. Coating amount: 0.1 µg per well. Dilution series: serial dilution. Estimated Antibody Titer to be 1:2,500. Substrate: TMB (p/n TMBE-1000).



Western Blot

Western Blot results of Rabbit anti-Setd1a antibody. Lane 1: NIH3T3 cell lysates. Lane 2: embryonic stem cell E14Tg2a lysates. Load: 40 µg per lane. Primary antibody: Setd1a antibody at 1:500 for overnight at 4°C. Secondary antibody: goat anti-rabbit HRP secondary antibody at 1:10,000 for 45 min at RT. Block: BSA/PBS-Tween overnight at 4°C. Predicted: 186kDa.

Disclaimer

This product is for research use only and is not intended for therapeutic or diagnostic applications. Please contact a technical service representative for more information. All products of animal origin manufactured by Rockland Immunochemicals are derived from starting materials of North American origin. Collection was performed in United States Department of Agriculture (USDA) inspected facilities and all materials have been inspected and certified to be free of disease and suitable for exportation. All properties listed are typical characteristics and are not specifications. All suggestions and data are offered in good faith but without guarantee as conditions and methods of use of our products are beyond our control. All claims must be made within 30 days following the date of delivery. The prospective user must determine the suitability of our materials before adopting them on a commercial scale. Suggested uses of our products are not recommendations to use our products in violation of any patent or as a license under any patent of Rockland Immunochemicals, Inc. If you require a commercial license to use this material and do not have one, then return this material, unopened to: Rockland Inc., P.O. BOX 5199, Limerick, Pennsylvania, USA.