



# SZABO SCANDIC

Part of Europa Biosite

## Produktinformation



Forschungsprodukte & Biochemikalien



Zellkultur & Verbrauchsmaterial



Diagnostik & molekulare Diagnostik



Laborgeräte & Service

Weitere Information auf den folgenden Seiten!  
See the following pages for more information!



### Lieferung & Zahlungsart

siehe unsere [Liefer- und Versandbedingungen](#)

### Zuschläge

- Mindermengenzuschlag
- Trockeneiszuschlag
- Gefahrgutzuschlag
- Expressversand

### SZABO-SCANDIC HandelsgmbH

Quellenstraße 110, A-1100 Wien

T. +43(0)1 489 3961-0

F. +43(0)1 489 3961-7

[mail@szabo-scandic.com](mailto:mail@szabo-scandic.com)

[www.szabo-scandic.com](http://www.szabo-scandic.com)

[linkedin.com/company/szaboscandic](https://www.linkedin.com/company/szaboscandic) 

## Datasheet for 100-401-V95

# ZBTB38 Antibody

### Overview

<b>Description:</b>	Anti-ZBTB38 (RABBIT) Antibody - 100-401-V95
<b>Item No.:</b>	100-401-V95
<b>Size:</b>	100 µL
<b>Applications:</b>	ELISA, WB
<b>Reactivity:</b>	Human
<b>Host Species:</b>	Rabbit

### Product Details

<b>Background:</b>	ZBTB38 is a methyl CpG binding protein that binds to DNA sequences containing a single methylated CpG, thereby acting as a transcriptional repressor. It has been found to be highly expressed in the brain and may be involved in the differentiation of late postmitotic neurons. Anti-ZBTB38 Antibody is ideal for research in Epigenetics, Gene Expression and Neuroscience.
<b>Synonyms:</b>	Zinc finger and BTB domain containing 38, CIBZ
<b>Host Species:</b>	Rabbit
<b>Clonality:</b>	Polyclonal
<b>Format:</b>	Antiserum

### Target Details

<b>Gene Name:</b>	ZBTB38
<b>Reactivity:</b>	Human
<b>Immunogen Type:</b>	Conjugated Peptide
<b>Immunogen:</b>	Anti-ZBTB38 Antibody was produced in rabbits by repeated immunizations with three different synthetic peptides of human ZBTB38: two containing an amino acid sequence from the internal region of the protein and one containing an amino acid sequence from the C-terminal region of the protein.
<b>Purity/Specificity:</b>	Anti-ZBTB38 Antibody is monospecific antiserum processed by delipidation and defibrination followed by sterile filtration. Cross reactivity with ZBTB38 from other species not tested.

<b>Relevant Links:</b>	<ul style="list-style-type: none"><li>• <a href="#">UniProtKB - Q8NAP3</a></li><li>• <a href="#">GeneID - 253461</a></li><li>• <a href="#">NCBI - NP_001073881.2</a></li></ul>
------------------------	--

## Application Details

<b>Tested Applications:</b>	ELISA, WB
<b>Application Note:</b>	Anti-ZBTB38 Antibody has been tested by ELISA and Western Blots. Specific conditions for reactivity should be optimized by the end user. Expect a band approximately 138 kDa in the appropriate cell lysate or extract.
<b>Assay Dilutions:</b>	All assays should be optimized by the user. Recommended dilutions (if any) may be listed below.
<b>ELISA:</b>	1:100 - 1:1,000
<b>WB:</b>	1:1,000

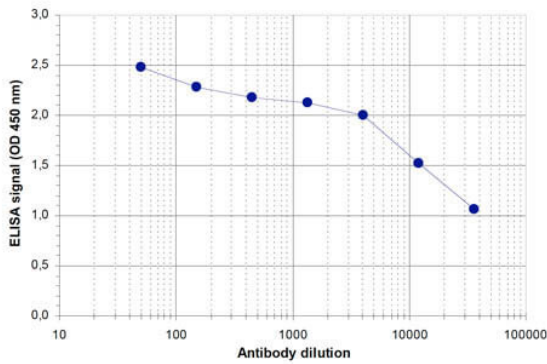
## Formulation

<b>Physical State:</b>	Liquid (sterile filtered)
<b>Concentration:</b>	neat
<b>Buffer:</b>	None
<b>Preservative:</b>	0.05% (w/v) Sodium Azide
<b>Stabilizer:</b>	None

## Shipping & Handling

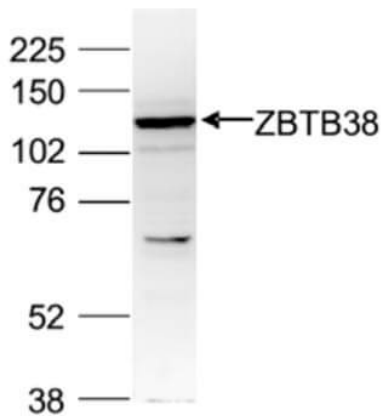
<b>Shipping Condition:</b>	Dry Ice
<b>Storage Condition:</b>	Store vial at -20° C prior to opening. Aliquot contents and freeze at -20° C or below for extended storage. Avoid cycles of freezing and thawing. Centrifuge product if not completely clear after standing at room temperature. This product is stable for several weeks at 4° C as an undiluted liquid. Dilute only prior to immediate use.
<b>Expiration:</b>	Expiration date is one (1) year from date of receipt.

## Images



### ELISA

ELISA results of Rabbit anti-ZBTB38 antibody. Antigen: BSA conjugated ZBTB38. Coating amount: 0.1 µg per well. Dilution series: serial dilution. Estimated Antibody Titer to be 1:26,000. Substrate: TMB (p/n TMBE-1000).



### Western Blot

Western Blot results of Rabbit anti-ZBTB38 antibody. Lane 1: HeLa nuclear extract lysates. Load: 40 µg per lane. Primary antibody: ZBTB38 antibody at 1:1,000 for overnight at 4°C. Secondary antibody: goat anti-rabbit HRP secondary antibody at 1:10,000 for 45 min at RT. Block: 5% Blotto/TBS-Tween overnight at 4°C. Predicted: 138kDa.

## Disclaimer

This product is for research use only and is not intended for therapeutic or diagnostic applications. Please contact a technical service representative for more information. All products of animal origin manufactured by Rockland Immunochemicals are derived from starting materials of North American origin. Collection was performed in United States Department of Agriculture (USDA) inspected facilities and all materials have been inspected and certified to be free of disease and suitable for exportation. All properties listed are typical characteristics and are not specifications. All suggestions and data are offered in good faith but without guarantee as conditions and methods of use of our products are beyond our control. All claims must be made within 30 days following the date of delivery. The prospective user must determine the suitability of our materials before adopting them on a commercial scale. Suggested uses of our products are not recommendations to use our products in violation of any patent or as a license under any patent of Rockland Immunochemicals, Inc. If you require a commercial license to use this material and do not have one, then return this material, unopened to: Rockland Inc., P.O. BOX 5199, Limerick, Pennsylvania, USA.