



# SZABO SCANDIC

Part of Europa Biosite

## Produktinformation



Forschungsprodukte & Biochemikalien



Zellkultur & Verbrauchsmaterial



Diagnostik & molekulare Diagnostik



Laborgeräte & Service

Weitere Information auf den folgenden Seiten!  
See the following pages for more information!



### Lieferung & Zahlungsart

siehe unsere [Liefer- und Versandbedingungen](#)

### Zuschläge

- Mindermengenzuschlag
- Trockeneiszuschlag
- Gefahrgutzuschlag
- Expressversand

### SZABO-SCANDIC HandelsgmbH

Quellenstraße 110, A-1100 Wien

T. +43(0)1 489 3961-0

F. +43(0)1 489 3961-7

[mail@szabo-scandic.com](mailto:mail@szabo-scandic.com)

[www.szabo-scandic.com](http://www.szabo-scandic.com)

[linkedin.com/company/szaboscandic](https://www.linkedin.com/company/szaboscandic) 

**Datasheet for 100-401-V97****PAPD1 Antibody****Overview**

<b>Description:</b>	Anti-PAPD1 (RABBIT) Antibody - 100-401-V97
<b>Item No.:</b>	100-401-V97
<b>Size:</b>	100 µL
<b>Applications:</b>	ELISA, WB
<b>Reactivity:</b>	Human
<b>Host Species:</b>	Rabbit

**Product Details**

<b>Background:</b>	PAPD1 is a mitochondrial RNA polymerase that generates the poly(A) tail of mitochondrial RNA's by adding AMP monomers to the 3'-end. PAPD1 might also be responsible for the introduction of UAA stop codons, which are not encoded by the mitochondrial DNA, in some RNA molecules. Anti-PAPD1 Antibody is ideal for research in Gene Expression, Transcription and Translation.
<b>Synonyms:</b>	Poly(A) RNA polymerase mitochondrial, PAP, PAP-associated domain-containing protein 1, Polynucleotide adenylyltransferase, Terminal uridylyltransferase 1, TUTase1, mtPAP
<b>Host Species:</b>	Rabbit
<b>Clonality:</b>	Polyclonal
<b>Format:</b>	Antiserum

**Target Details**

<b>Gene Name:</b>	MTPAP
<b>Reactivity:</b>	Human
<b>Immunogen Type:</b>	Conjugated Peptide
<b>Immunogen:</b>	Anti-PAPD1 Antibody was produced in rabbits by repeated immunizations with a synthetic peptide of human PAPD1 containing an amino acid sequence from the C-terminus of the protein.
<b>Purity/Specificity:</b>	Anti-PAPD1 Antibody is monospecific antiserum processed by delipidation and defibrination followed by sterile filtration. Cross reactivity with PAPD1 from other species not tested.

<b>Relevant Links:</b>	<ul style="list-style-type: none"><li>• <a href="#">UniProtKB - Q9NVV4</a></li><li>• <a href="#">GeneID - 55149</a></li><li>• <a href="#">NCBI - NP_060579.3</a></li></ul>
------------------------	--

## Application Details

<b>Tested Applications:</b>	ELISA, WB
<b>Application Note:</b>	Anti-PAPD1 Antibody has been tested by ELISA and Western Blots. Specific conditions for reactivity should be optimized by the end user. Expect a band approximately 66 kDa in the appropriate cell lysate or extract.
<b>Assay Dilutions:</b>	All assays should be optimized by the user. Recommended dilutions (if any) may be listed below.
<b>ELISA:</b>	1:500
<b>WB:</b>	1:1,000

## Formulation

<b>Physical State:</b>	Liquid (sterile filtered)
<b>Concentration:</b>	neat
<b>Buffer:</b>	None
<b>Preservative:</b>	0.05% (w/v) Sodium Azide
<b>Stabilizer:</b>	None

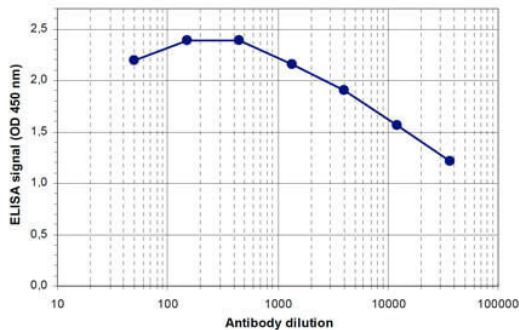
## Shipping & Handling

<b>Shipping Condition:</b>	Dry Ice
<b>Storage Condition:</b>	Store vial at -20° C prior to opening. Aliquot contents and freeze at -20° C or below for extended storage. Avoid cycles of freezing and thawing. Centrifuge product if not completely clear after standing at room temperature. This product is stable for several weeks at 4° C as an undiluted liquid. Dilute only prior to immediate use.
<b>Expiration:</b>	Expiration date is one (1) year from date of receipt.

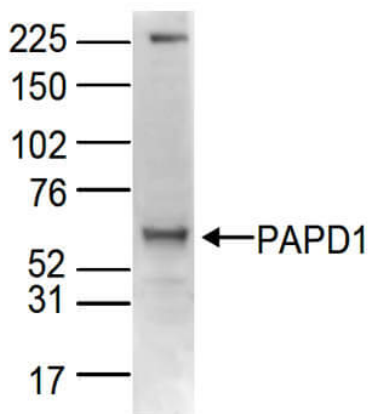
## Images

**ELISA**

ELISA results of Rabbit anti-PAPD1 antibody. Antigen: BSA conjugated PAPD1. Coating amount: 0.1 µg per well. Dilution series: serial dilution. Estimated Antibody Titer to be 1:47,000. Substrate: TMB (p/n TMBE-1000).


**Western Blot**

Western Blot results of Rabbit anti-PAPD1 antibody. Lane 1: U2OS lysates. Load: 80 µg per lane. Primary antibody: PAPD1 antibody at 1:1,000 for overnight at 4°C. Secondary antibody: goat anti-rabbit HRP secondary antibody at 1:10,000 for 45 min at RT. Block: 5% Blotto/TBS-Tween overnight at 4°C. Predicted: 66kDa.


**Disclaimer**

This product is for research use only and is not intended for therapeutic or diagnostic applications. Please contact a technical service representative for more information. All products of animal origin manufactured by Rockland Immunochemicals are derived from starting materials of North American origin. Collection was performed in United States Department of Agriculture (USDA) inspected facilities and all materials have been inspected and certified to be free of disease and suitable for exportation. All properties listed are typical characteristics and are not specifications. All suggestions and data are offered in good faith but without guarantee as conditions and methods of use of our products are beyond our control. All claims must be made within 30 days following the date of delivery. The prospective user must determine the suitability of our materials before adopting them on a commercial scale. Suggested uses of our products are not recommendations to use our products in violation of any patent or as a license under any patent of Rockland Immunochemicals, Inc. If you require a commercial license to use this material and do not have one, then return this material, unopened to: Rockland Inc., P.O. BOX 5199, Limerick, Pennsylvania, USA.