



SZABO SCANDIC

Part of Europa Biosite

Produktinformation



Forschungsprodukte & Biochemikalien



Zellkultur & Verbrauchsmaterial



Diagnostik & molekulare Diagnostik



Laborgeräte & Service

Weitere Information auf den folgenden Seiten!
See the following pages for more information!



Lieferung & Zahlungsart

siehe unsere [Liefer- und Versandbedingungen](#)

Zuschläge

- Mindermengenzuschlag
- Trockeneiszuschlag
- Gefahrgutzuschlag
- Expressversand

SZABO-SCANDIC HandelsgmbH

Quellenstraße 110, A-1100 Wien

T. +43(0)1 489 3961-0

F. +43(0)1 489 3961-7

mail@szabo-scandic.com

www.szabo-scandic.com

[linkedin.com/company/szaboscandic](https://www.linkedin.com/company/szaboscandic) 

Datasheet for 100-401-W42

JARID1C Antibody

Overview

Description:	Anti-JARID1C (RABBIT) Antibody - 100-401-W42
Item No.:	100-401-W42
Size:	100 µL
Applications:	ELISA, WB
Reactivity:	Human, Mouse
Host Species:	Rabbit

Product Details

Background:	Jarid1c is a histone demethylase which specifically demethylates lysine 4 of histone H3, thereby playing a internal role in the regulation of transcription and chromatin remodeling. Jarid1c demethylates the trimethylated and dimethylated lysine 4, but not the monomethylated form. Further, Jarid1c participates in transcriptional repression of neuronal genes by recruiting histone deacetylases and REST at neuron-restrictive silencer elements. Mutations in the Jarid1c gene have been associated with X-linked mental retardation. Anti-Jarid1c Antibody is ideal for research in Epigenetics, Gene Expression and Neuroscience.
Synonyms:	Lysine-specific demethylase 5C, Histone demethylase JARID1C, Jumonji/ARID domain-containing protein 1C, Protein SmcX, Protein Xe169, DXS1272E, JARID1C, SMCX, XE169
Host Species:	Rabbit
Clonality:	Polyclonal
Format:	Antiserum

Target Details

Gene Name:	KDM5C
Reactivity:	Human, Mouse
Immunogen Type:	Conjugated Peptide
Immunogen:	Anti-JARID1C Antibody was produced in rabbits by repeated immunizations with three different synthetic peptides containing sequences from the inner part of the mouse Jarid1c protein.

Purity/Specificity: Anti-Jarid1c Antibody is monospecific antiserum processed by delipidation and defibrination followed by sterile filtration. Cross reactivity with Jarid1c from other species not tested.

Relevant Links:

- [UniProtKB - P41229](#)
- [GeneID - 8242](#)
- [NCBI - NP_001140174.1](#)

Application Details

Tested Applications: ELISA, WB

Application Note: Anti-JARID1C Antibody has been tested by ELISA and Western Blots. Specific conditions for reactivity should be optimized by the end user. Expect a band approximately 175 kDa in the appropriate cell lysate or extract.

Assay Dilutions: All assays should be optimized by the user. Recommended dilutions (if any) may be listed below.

ELISA: 1:500

WB: 1:1,000

Formulation

Physical State: Liquid (sterile filtered)

Concentration: neat

Buffer: None

Preservative: 0.05% (w/v) Sodium Azide

Stabilizer: None

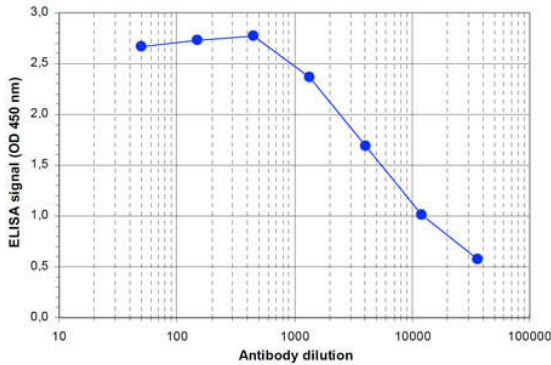
Shipping & Handling

Shipping Condition: Dry Ice

Storage Condition: Store vial at -20° C prior to opening. Aliquot contents and freeze at -20° C or below for extended storage. Avoid cycles of freezing and thawing. Centrifuge product if not completely clear after standing at room temperature. This product is stable for several weeks at 4° C as an undiluted liquid. Dilute only prior to immediate use.

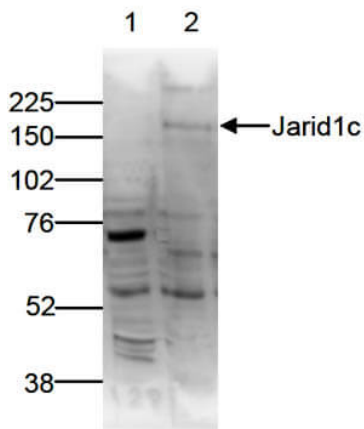
Expiration: Expiration date is one (1) year from date of receipt.

Images



ELISA

ELISA results of Rabbit anti-Jarid1c antibody. Antigen: BSA conjugated Jarid1c. Coating amount: 0.1 µg per well. Dilution series: serial dilution. Estimated Antibody Titer to be 1:7,000. Substrate: TMB (p/n TMBE-1000).



Western Blot

Western Blot results of Rabbit anti-Jarid1c antibody. Load: HeLa nuclear extract lysates 40 µg per lane. Primary antibody: Lane 1: Preimmune antiserum, Lane 2: Anti-Jarid1c antibody, both at 1:1,000 for overnight at 4°C. Secondary antibody: goat anti-rabbit HRP secondary antibody at 1:10,000 for 45 min at RT. Block: 5% Blotto/TBST overnight at 4°C. Predicted: 175kDa. Lane 1 confirms that the additional bands at approximately 55 and 80 kDa are also present in the preimmune serum.

Disclaimer

This product is for research use only and is not intended for therapeutic or diagnostic applications. Please contact a technical service representative for more information. All products of animal origin manufactured by Rockland Immunochemicals are derived from starting materials of North American origin. Collection was performed in United States Department of Agriculture (USDA) inspected facilities and all materials have been inspected and certified to be free of disease and suitable for exportation. All properties listed are typical characteristics and are not specifications. All suggestions and data are offered in good faith but without guarantee as conditions and methods of use of our products are beyond our control. All claims must be made within 30 days following the date of delivery. The prospective user must determine the suitability of our materials before adopting them on a commercial scale. Suggested uses of our products are not recommendations to use our products in violation of any patent or as a license under any patent of Rockland Immunochemicals, Inc. If you require a commercial license to use this material and do not have one, then return this material, unopened to: Rockland Inc., P.O. BOX 5199, Limerick, Pennsylvania, USA.