



SZABO SCANDIC

Part of Europa Biosite

Produktinformation



Forschungsprodukte & Biochemikalien



Zellkultur & Verbrauchsmaterial



Diagnostik & molekulare Diagnostik



Laborgeräte & Service

Weitere Information auf den folgenden Seiten!
See the following pages for more information!



Lieferung & Zahlungsart

siehe unsere [Liefer- und Versandbedingungen](#)

Zuschläge

- Mindermengenzuschlag
- Trockeneiszuschlag
- Gefahrgutzuschlag
- Expressversand

SZABO-SCANDIC HandelsgmbH

Quellenstraße 110, A-1100 Wien

T. +43(0)1 489 3961-0

F. +43(0)1 489 3961-7

mail@szabo-scandic.com

www.szabo-scandic.com

[linkedin.com/company/szaboscandic](https://www.linkedin.com/company/szaboscandic) 

Datasheet for 100-401-W43**KDM1B Antibody****Overview**

Description:	Anti-KDM1B (RABBIT) Antibody - 100-401-W43
Item No.:	100-401-W43
Size:	100 µL
Applications:	ELISA, WB
Reactivity:	Human
Host Species:	Rabbit

Product Details

Background:	KDM1B is a histone demethylase that demethylates lysine 4 of histone H3, a specific tag for epigenetic transcriptional activation, thereby acting as a corepressor. KDM1B is able to demethylate both mono- and di-methylated lysine 4 of histone H3, but has no effect on tri-methylated lysine 4, mono-, di- or tri-methylated lysine 9, mono-, di- or tri-methylated lysine 27, mono-, di- or tri-methylated lysine 36 of histone H3, or on mono-, di- or tri-methylated lysine 20 of histone H4. KDM1B is also required for de novo DNA methylation of a subset of imprinted genes during oogenesis. It acts by oxidizing the substrate by FAD to generate the corresponding imine that is subsequently hydrolyzed. Anti-KDM1B is ideal for research in Epigenetics and Gene Expression.
Synonyms:	Lysine-specific histone demethylase 1B, Flavin-containing amine oxidase domain-containing protein 1, Lysine-specific histone demethylase 2, AOF1, C6orf193, LSD2
Host Species:	Rabbit
Clonality:	Polyclonal
Format:	Antiserum

Target Details

Gene Name:	KDM1B
Reactivity:	Human
Immunogen Type:	Conjugated Peptide

Immunogen:	Anti-KDM1B Antibody was produced in rabbits by repeated immunizations with two different synthetic peptides containing a sequence from the N-terminus and internal region of the human KDM1B protein.
Purity/Specificity:	Anti-KDM1B Antibody is monospecific antiserum processed by delipidation and defibrination followed by sterile filtration. Cross reactivity with KDM1B from other species not tested.
Relevant Links:	<ul style="list-style-type: none">• UniProtKB - Q8NB78• GeneID - 221656• NCBI - NP_694587.3

Application Details

Tested Applications:	ELISA, WB
Application Note:	Anti-KDM1B Antibody has been tested by ELISA. Specific conditions for reactivity should be optimized by the end user.
Assay Dilutions:	All assays should be optimized by the user. Recommended dilutions (if any) may be listed below.
ELISA:	1:500

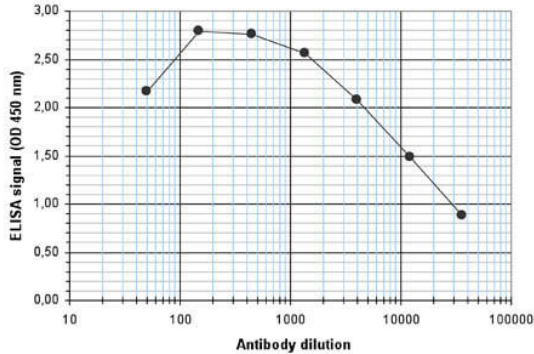
Formulation

Physical State:	Liquid (sterile filtered)
Concentration:	neat
Buffer:	None
Preservative:	0.05% (w/v) Sodium Azide
Stabilizer:	None

Shipping & Handling

Shipping Condition:	Dry Ice
Storage Condition:	Store vial at -20° C prior to opening. Aliquot contents and freeze at -20° C or below for extended storage. Avoid cycles of freezing and thawing. Centrifuge product if not completely clear after standing at room temperature. This product is stable for several weeks at 4° C as an undiluted liquid. Dilute only prior to immediate use.
Expiration:	Expiration date is one (1) year from date of receipt.

Images



ELISA

ELISA results of Rabbit anti-KDM1B antibody. Antigen: BSA conjugated KDM1B. Coating amount: 0.1 μg per well. Dilution series: serial dilution. Estimated Antibody Titer to be 1:14,250. Substrate: TMB (p/n TMBE-1000).

Disclaimer

This product is for research use only and is not intended for therapeutic or diagnostic applications. Please contact a technical service representative for more information. All products of animal origin manufactured by Rockland Immunochemicals are derived from starting materials of North American origin. Collection was performed in United States Department of Agriculture (USDA) inspected facilities and all materials have been inspected and certified to be free of disease and suitable for exportation. All properties listed are typical characteristics and are not specifications. All suggestions and data are offered in good faith but without guarantee as conditions and methods of use of our products are beyond our control. All claims must be made within 30 days following the date of delivery. The prospective user must determine the suitability of our materials before adopting them on a commercial scale. Suggested uses of our products are not recommendations to use our products in violation of any patent or as a license under any patent of Rockland Immunochemicals, Inc. If you require a commercial license to use this material and do not have one, then return this material, unopened to: Rockland Inc., P.O. BOX 5199, Limerick, Pennsylvania, USA.