



SZABO SCANDIC

Part of Europa Biosite

Produktinformation



Forschungsprodukte & Biochemikalien



Zellkultur & Verbrauchsmaterial



Diagnostik & molekulare Diagnostik



Laborgeräte & Service

Weitere Information auf den folgenden Seiten!
See the following pages for more information!



Lieferung & Zahlungsart

siehe unsere [Liefer- und Versandbedingungen](#)

Zuschläge

- Mindermengenzuschlag
- Trockeneiszuschlag
- Gefahrgutzuschlag
- Expressversand

SZABO-SCANDIC HandelsgmbH

Quellenstraße 110, A-1100 Wien

T. +43(0)1 489 3961-0

F. +43(0)1 489 3961-7

mail@szabo-scandic.com

www.szabo-scandic.com

[linkedin.com/company/szaboscandic](https://www.linkedin.com/company/szaboscandic) 

Datasheet for 100-4133

Ovalbumin Antibody

Overview

Description:	Anti-Ovalbumin (Hen Egg White) (RABBIT) Antibody - 100-4133
Item No.:	100-4133
Size:	2 mL
Applications:	WB
Reactivity:	Chicken
Host Species:	Rabbit

Product Details

Background:	Anti-Ovalbumin Antibody detects Ovalbumin. Ovalbumin is the main protein found in egg white, making up 60-65% of the total protein. It is a non-inhibitory serpin. It is the storage protein of egg white. Anti-Ovalbumin Antibody is ideal for investigators involved in Cell Signaling, Immunology and Signal Transduction research.
Synonyms:	rabbit anti-Ovalbumin Antibody, Ovalbumin, Egg albumin, Plakalbumin, Allergen Gal d II, Gal d 2, Hen Egg White
Host Species:	Rabbit
Clonality:	Polyclonal
Format:	Antiserum

Target Details

Gene Name:	SERPINB14
Reactivity:	Chicken
Immunogen Type:	Native Protein
Immunogen:	Ovalbumin [Hen Egg White] Anti-Ovalbumin Antibody was produced by repeated immunizations with hen egg white Ovalbumin protein.

Purity/Specificity: Ovalbumin Antibody is an antiserum prepared from monospecific antiserum by a delipidation and defibrination. Assay by immunoelectrophoresis resulted in a single precipitin arc against anti-rabbit serum, purified and partially purified Ovalbumin [Hen Egg White]. Cross reactivity against Ovalbumin from other tissues and species may occur but have not been specifically determined.

Relevant Links:

- [100-4133 SDS](#)
- [UniProtKB - P01012](#)
- [NCBI - P01012.2](#)
- [GeneID - 396058](#)

Application Details

Tested Applications: WB

Application Note: Anti-ovalbumin Antibody has been tested by western blot and is suitable for ELISA and IP. Researchers should determine optimal titers for applications that are not stated below.

Assay Dilutions: All assays should be optimized by the user. Recommended dilutions (if any) may be listed below.

ELISA: 1:5,000 - 1:20,000

IP: 1:100

WB: 1:500 - 1:5,000

Formulation

Physical State: Lyophilized

Concentration: 80 mg/mL by Refractometry

Buffer: 0.02 M Potassium Phosphate, 0.15 M Sodium Chloride, pH 7.2

Preservative: 0.01% (w/v) Sodium Azide

Stabilizer: None

Reconstitution Volume: 2.0 mL

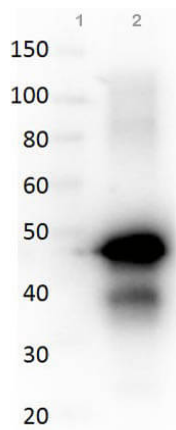
Reconstitution Buffer: Restore with deionized water (or equivalent)

Shipping & Handling

Shipping Condition: Ambient

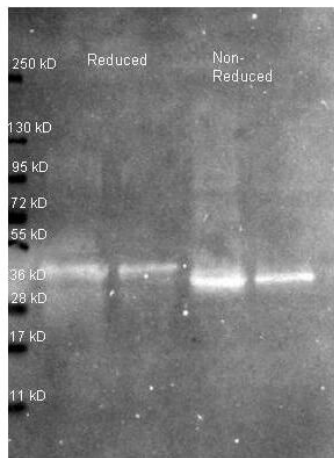
Storage Condition:	Store vial at 4° C prior to restoration. For extended storage aliquot contents and freeze at -20° C or below. Avoid cycles of freezing and thawing. Centrifuge product if not completely clear after standing at room temperature. This product is stable for several weeks at 4° C as an undiluted liquid. Dilute only prior to immediate use.
Expiration:	Expiration date is one (1) year from date of receipt.

Images



Western Blot

Western Blot of Rabbit anti-OVALBUMIN (Hen Egg White) antibody. Lane 1: Molecular Weight. Lane 2: Reduced Ovalbumin. Load: 50 ng. Primary antibody: Ovalbumin antibody at 1:1,000 overnight at 4°C. Secondary antibody: Peroxidase rabbit secondary antibody (p/n 611-103-122) at 1:40,000 for 30 min at RT. Block: Blocking Buffer for Fluorescent Western Blotting (p/n MB-070) for 30 min at RT. Predicted/Observed size: 45 kDa for Ovalbumin.



Western Blot

Western Blot of Rabbit anti-Ovalbumin antibody. Lane 1: ~1µg of purified Ovalbumin reduced. Lane 2: ~0.25µg of purified Ovalbumin reduced. Lane 3: ~1µg of purified Ovalbumin non-reduced. Lane 4: ~0.25µg of purified Ovalbumin non-reduced. Primary antibody: anti Ovalbumin antibody at 1:5000 for overnight at 4°C. Secondary antibody: Atto 425 conjugated goat anti rabbit secondary antibody at 1:10,000 for 1.5 hours at RT. Block: MB-070 overnight at 4°C. Predicted/Observed size: 42.9 kDa, ~36 kDa for Ovalbumin. Other band(s): none.

References

- Dufresne-Martin G et al. Peptide mass fingerprinting by matrix-assisted laser desorption ionization mass spectrometry of proteins detected by immunostaining on nitrocellulose. *Proteomics*. (2005)

Disclaimer

This product is for research use only and is not intended for therapeutic or diagnostic applications. Please contact a technical service representative for more information. All products of animal origin manufactured by Rockland Immunochemicals are derived from starting materials of North American origin. Collection was performed in United States Department of Agriculture (USDA) inspected facilities and all materials have been inspected and certified to be free of disease and suitable for exportation. All properties listed are typical characteristics and are not specifications. All suggestions and data are offered in good faith but without guarantee as conditions and methods of use of our products are beyond our control. All claims must be made within 30 days following the date of delivery. The prospective user must determine the suitability of our materials before adopting them on a commercial scale. Suggested uses of our products are not recommendations to use our products in violation of any patent or as a license under any patent of Rockland Immunochemicals, Inc. If you require a commercial license to use this material and do not have one, then return this material, unopened to: Rockland Inc., P.O. BOX 5199, Limerick, Pennsylvania, USA.