



SZABO SCANDIC

Part of Europa Biosite

Produktinformation



Forschungsprodukte & Biochemikalien



Zellkultur & Verbrauchsmaterial



Diagnostik & molekulare Diagnostik



Laborgeräte & Service

Weitere Information auf den folgenden Seiten!
See the following pages for more information!



Lieferung & Zahlungsart

siehe unsere [Liefer- und Versandbedingungen](#)

Zuschläge

- Mindermengenzuschlag
- Trockeneiszuschlag
- Gefahrgutzuschlag
- Expressversand

SZABO-SCANDIC HandelsgmbH

Quellenstraße 110, A-1100 Wien

T. +43(0)1 489 3961-0

F. +43(0)1 489 3961-7

mail@szabo-scandic.com

www.szabo-scandic.com

[linkedin.com/company/szaboscandic](https://www.linkedin.com/company/szaboscandic) 

Datasheet for 100-4144

Aldehyde Dehydrogenase Antibody

Overview

Description:	Anti-Aldehyde Dehydrogenase (Yeast) (RABBIT) Antibody - 100-4144
Item No.:	100-4144
Size:	2 mL
Applications:	WB
Reactivity:	<i>S. cerevisiae</i>
Host Species:	Rabbit

Product Details

Background:	Cytoplasmic aldehyde dehydrogenase is involved in ethanol oxidation. Aldehyde dehydrogenase is required for pantothenic acid production through the conversion of 3-aminopropanal to beta-alanine, an intermediate in pantothenic acid (vitamin B5) and coenzyme A (CoA) biosynthesis.
Synonyms:	rabbit anti-Aldehyde Dehydrogenase Antibody, Aldehyde dehydrogenase, [NAD(P)+] 1, ALD2, ALD5
Host Species:	Rabbit
Clonality:	Polyclonal
Format:	Antiserum

Target Details

Gene Name:	ALD2
Reactivity:	<i>S. cerevisiae</i>
Immunogen Type:	Native Protein
Immunogen:	Aldehyde Dehydrogenase [Yeast]

Purity/Specificity: This product was prepared from monospecific antiserum by a delipidation and defibrination. Assay by immunoelectrophoresis resulted in a single precipitin arc against anti-rabbit serum, purified and partially purified Aldehyde Dehydrogenase [Yeast]. Cross reactivity against Aldehyde Dehydrogenase from other tissues and species may occur but have not been specifically determined.

Relevant Links:

- [UniProtKB - P47771](#)
- [NCBI - NP_013893.1](#)
- [GenelD - 855206](#)

Application Details

Tested Applications: WB

Application Note: Anti-Aldehyde Dehydrogenase has been tested by western blot and is suitable to be assayed against 1.0 ug of Aldehyde Dehydrogenase [Yeast] in a standard ELISA using Peroxidase conjugated Affinity Purified anti-Rabbit IgG [H&L] (Goat) code #611-1302 and (ABTS (2,2'-azino-bis-[3-ethylbenthiiazoline-6-sulfonic acid])) code # ABTS-100 as a substrate for 30 minutes at room temperature. A working dilution of 1:3,000 to 1:16,000 of the reconstitution concentration is suggested for this product.

Assay Dilutions: All assays should be optimized by the user. Recommended dilutions (if any) may be listed below.

ELISA: 1:5,000 - 1:20,000

IP: 1:100

WB: 1:500 - 1:5,000

Formulation

Physical State: Lyophilized

Concentration: 85 mg/mL by Refractometry

Buffer: 0.02 M Potassium Phosphate, 0.15 M Sodium Chloride, pH 7.2

Preservative: 0.01% (w/v) Sodium Azide

Stabilizer: None

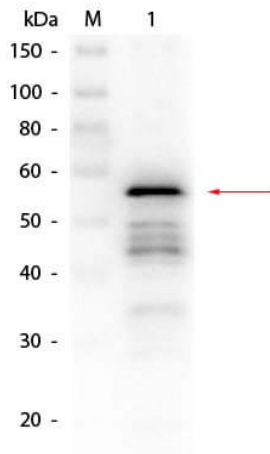
Reconstitution Volume: 2.0 mL

Reconstitution Buffer: Restore with deionized water (or equivalent)

Shipping & Handling

Shipping Condition:	Ambient
Storage Condition:	Store vial at 4° C prior to restoration. For extended storage aliquot contents and freeze at -20° C or below. Avoid cycles of freezing and thawing. Centrifuge product if not completely clear after standing at room temperature. This product is stable for several weeks at 4° C as an undiluted liquid. Dilute only prior to immediate use.
Expiration:	Expiration date is one (1) year from date of receipt.

Images



Western Blot

Western Blot of Rabbit anti-Aldehyde Dehydrogenase (yeast) Antibody. Lane 1: Aldehyde Dehydrogenase (yeast). Load: 50 ng per lane. Primary antibody: Rabbit anti-Aldehyde Dehydrogenase (yeast) Antibody at 1:500 overnight at 4°C. Secondary antibody: Peroxidase Conjugated Goat anti-Rabbit IgG secondary antibody (p/n 611-103-122) at 1:40,000 for 30 min at RT. Block: MB-070 for 30 min at RT. Predicted/Observed size: 55 kDa, 55 kDa for Aldehyde Dehydrogenase (yeast).

Disclaimer

This product is for research use only and is not intended for therapeutic or diagnostic applications. Please contact a technical service representative for more information. All products of animal origin manufactured by Rockland Immunochemicals are derived from starting materials of North American origin. Collection was performed in United States Department of Agriculture (USDA) inspected facilities and all materials have been inspected and certified to be free of disease and suitable for exportation. All properties listed are typical characteristics and are not specifications. All suggestions and data are offered in good faith but without guarantee as conditions and methods of use of our products are beyond our control. All claims must be made within 30 days following the date of delivery. The prospective user must determine the suitability of our materials before adopting them on a commercial scale. Suggested uses of our products are not recommendations to use our products in violation of any patent or as a license under any patent of Rockland Immunochemicals, Inc. If you require a commercial license to use this material and do not have one, then return this material, unopened to: Rockland Inc., P.O. BOX 5199, Limerick, Pennsylvania, USA.