



# SZABO SCANDIC

Part of Europa Biosite

## Produktinformation



Forschungsprodukte & Biochemikalien



Zellkultur & Verbrauchsmaterial



Diagnostik & molekulare Diagnostik



Laborgeräte & Service

Weitere Information auf den folgenden Seiten!  
See the following pages for more information!



### Lieferung & Zahlungsart

siehe unsere [Liefer- und Versandbedingungen](#)

### Zuschläge

- Mindermengenzuschlag
- Trockeneiszuschlag
- Gefahrgutzuschlag
- Expressversand

### SZABO-SCANDIC HandelsgmbH

Quellenstraße 110, A-1100 Wien

T. +43(0)1 489 3961-0

F. +43(0)1 489 3961-7

[mail@szabo-scandic.com](mailto:mail@szabo-scandic.com)

[www.szabo-scandic.com](http://www.szabo-scandic.com)

[linkedin.com/company/szaboscandic](https://www.linkedin.com/company/szaboscandic) 

**Datasheet for 100-4172****Lysozyme Antibody****Overview**

<b>Description:</b>	Anti-Lysozyme (Hen Egg White) (RABBIT) Antibody - 100-4172
<b>Item No.:</b>	100-4172
<b>Size:</b>	2 mL
<b>Applications:</b>	ELISA, WB
<b>Reactivity:</b>	Chicken
<b>Host Species:</b>	Rabbit

**Product Details**

<b>Background:</b>	Lysozyme antibody targets lysozyme protein. Lysozyme (also called muramidase and 1,4-beta-N-acetylmuramidase ) is abundant in a number of secretions, such as tears, saliva, human milk, and mucus. The enzyme functions by attacking peptidoglycans (found in the cell walls of bacteria, especially Gram-positive bacteria) and hydrolyzing the glycosidic bond that connects N-acetylmuramic acid with the fourth carbon atom of N-acetylglucosamine. The anti-Lysozyme antibody is suitable for detection of lysozyme from a number of different sources.
<b>Synonyms:</b>	rabbit anti-Lysozyme Antibody, Lysozyme C, 1,4-beta-N-acetylmuramidase C, Allergen Gal d IV, Gal d 4, Hen Egg White
<b>Host Species:</b>	Rabbit
<b>Clonality:</b>	Polyclonal
<b>Format:</b>	Antiserum

**Target Details**

<b>Gene Name:</b>	LYZ
<b>Reactivity:</b>	Chicken
<b>Immunogen Type:</b>	Native Protein
<b>Immunogen:</b>	Lysozyme [Hen Egg White]

**Purity/Specificity:** Anti-Lysozyme antibody is an antiserum prepared from monospecific antiserum by a delipidation and defibrination. Assay by immunoelectrophoresis resulted in a single precipitin arc against anti-rabbit serum, purified and partially purified Lysozyme [Hen Egg White]. Cross reactivity against Lysozyme from other tissues and species may occur but have not been specifically determined.

**Relevant Links:**

- [UniProtKB - P00698](#)
- [NCBI - NP\\_990612.1](#)
- [GenelD - 396218](#)

## Application Details

**Tested Applications:** ELISA, WB

**Application Note:** Anti-Lysozyme antibody has been tested by western blot and ELISA. This product has been assayed against 1.0 ug of Lysozyme [Hen Egg White] in a standard ELISA using Peroxidase conjugated Affinity Purified anti-Rabbit IgG and (ABTS (2,2'-azino-bis-[3-ethylbenthiazoline-6-sulfonic acid]) as a substrate for 30 minutes at room temperature. A working dilution of 1:1,000 to 1:2,000 of the reconstitution concentration is suggested for this product.

**Assay Dilutions:** All assays should be optimized by the user. Recommended dilutions (if any) may be listed below.

**ELISA:** 1:5,000 - 1:20,000

**IP:** 1:100

**WB:** 1:500 - 1:5,000

## Formulation

**Physical State:** Lyophilized

**Concentration:** 80 mg/mL by Refractometry

**Buffer:** 0.02 M Potassium Phosphate, 0.15 M Sodium Chloride, pH 7.2

**Preservative:** 0.01% (w/v) Sodium Azide

**Stabilizer:** None

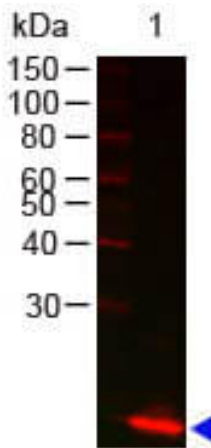
**Reconstitution Volume:** 2.0 mL

**Reconstitution Buffer:** Restore with deionized water (or equivalent)

## Shipping & Handling

<b>Shipping Condition:</b>	Ambient
<b>Storage Condition:</b>	Store vial at 4° C prior to restoration. For extended storage aliquot contents and freeze at -20° C or below. Avoid cycles of freezing and thawing. Centrifuge product if not completely clear after standing at room temperature. This product is stable for several weeks at 4° C as an undiluted liquid. Dilute only prior to immediate use.
<b>Expiration:</b>	Expiration date is one (1) year from date of receipt.

## Images



### Western Blot

Western Blot of Rabbit anti-Lysozyme antibody. Lane 1: Lysozyme. Load: 100 ng per lane. Primary antibody: Lysozyme antibody at 1:1000 for overnight at 4°C. Secondary antibody: DyLight 649 goat anti-rabbit at 1:20,000 for 30 min at RT. Block: MB-070 for 30 min at RT. Predicted/Observed size: 14 kDa, 14 kDa.

## Disclaimer

This product is for research use only and is not intended for therapeutic or diagnostic applications. Please contact a technical service representative for more information. All products of animal origin manufactured by Rockland Immunochemicals are derived from starting materials of North American origin. Collection was performed in United States Department of Agriculture (USDA) inspected facilities and all materials have been inspected and certified to be free of disease and suitable for exportation. All properties listed are typical characteristics and are not specifications. All suggestions and data are offered in good faith but without guarantee as conditions and methods of use of our products are beyond our control. All claims must be made within 30 days following the date of delivery. The prospective user must determine the suitability of our materials before adopting them on a commercial scale. Suggested uses of our products are not recommendations to use our products in violation of any patent or as a license under any patent of Rockland Immunochemicals, Inc. If you require a commercial license to use this material and do not have one, then return this material, unopened to: Rockland Inc., P.O. BOX 5199, Limerick, Pennsylvania, USA.