



# SZABO SCANDIC

Part of Europa Biosite

## Produktinformation



Forschungsprodukte & Biochemikalien



Zellkultur & Verbrauchsmaterial



Diagnostik & molekulare Diagnostik



Laborgeräte & Service

Weitere Information auf den folgenden Seiten!  
See the following pages for more information!



### Lieferung & Zahlungsart

siehe unsere [Liefer- und Versandbedingungen](#)

### Zuschläge

- Mindermengenzuschlag
- Trockeneiszuschlag
- Gefahrgutzuschlag
- Expressversand

### SZABO-SCANDIC HandelsgmbH

Quellenstraße 110, A-1100 Wien

T. +43(0)1 489 3961-0

F. +43(0)1 489 3961-7

[mail@szabo-scandic.com](mailto:mail@szabo-scandic.com)

[www.szabo-scandic.com](http://www.szabo-scandic.com)

[linkedin.com/company/szaboscandic](https://www.linkedin.com/company/szaboscandic) 

## Datasheet for 100-4199

**B-Phycoerythrin Antibody****Overview**

<b>Description:</b>	Anti-B-PHYCOERYTHRIN (RABBIT) Antibody - 100-4199
<b>Item No.:</b>	100-4199
<b>Size:</b>	2 mL
<b>Applications:</b>	WB, Other
<b>Reactivity:</b>	Phycoerythrin
<b>Host Species:</b>	Rabbit

**Product Details**

<b>Background:</b>	Anti-B-Phycoerythrin Antibody generated in rabbit recognizes Phycoerythrin. Phycoerythrin (PE) is a red protein-pigment present in red algae and cryptophytes and an accessory pigment to the main chlorophyll pigments responsible for photosynthesis. B-phycoerythrin and R-phycoerythrin is predominantly produced by red algae. Secondary Antibodies are available in a variety of formats and conjugate types. When choosing a secondary antibody product, consideration must be given to species and immunoglobulin specificity, conjugate type, fragment and chain specificity, level of cross-reactivity, and host-species source and fragment composition.
<b>Synonyms:</b>	rabbit anti-B-Phycoerythrin Antibody, rabbit anti B-Phycoerythrin, rabbit anti Phycoerythrin
<b>Host Species:</b>	Rabbit
<b>Clonality:</b>	Polyclonal
<b>Format:</b>	Antiserum

**Target Details**

<b>Reactivity:</b>	Phycoerythrin
<b>Immunogen Type:</b>	Native Protein
<b>Immunogen:</b>	B-Phycoerythrin [Porphyridium cruentum]
<b>Purity/Specificity:</b>	This product was prepared from monospecific antiserum by a delipidation and defibrination. Assay by immunoelectrophoresis resulted in a single precipitin arc against anti-rabbit serum, purified and partially purified B-Phycoerythrin [Porphyridium cruentum]. Cross reactivity against B-Phycoerythrin from other sources is unknown.

**Relevant Links:**

- [UniProtKB - P11392](#)

## Application Details

<b>Tested Applications:</b>	WB
<b>Suggested Applications:</b>	Other (Based on references)
<b>Application Note:</b>	Anti-B-Phycocerythrin has been tested by western blot and is suitable for dot blot, ELISA, immunoprecipitation and most immunological methods requiring high titer and specificity.
<b>Assay Dilutions:</b>	All assays should be optimized by the user. Recommended dilutions (if any) may be listed below.
<b>ELISA:</b>	1:20,000-1:100,000
<b>IHC:</b>	1:1,000-1:5,000
<b>IP:</b>	1:1,000-1:5,000
<b>WB:</b>	1:2,000-1:10,000

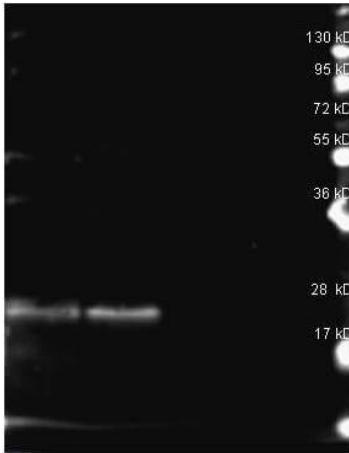
## Formulation

<b>Physical State:</b>	Lyophilized
<b>Concentration:</b>	80 mg/mL by Refractometry
<b>Buffer:</b>	0.02 M Potassium Phosphate, 0.15 M Sodium Chloride, pH 7.2
<b>Preservative:</b>	None
<b>Stabilizer:</b>	None
<b>Reconstitution Volume:</b>	2.0 mL
<b>Reconstitution Buffer:</b>	Restore with deionized water (or equivalent)

## Shipping & Handling

<b>Shipping Condition:</b>	Ambient
<b>Storage Condition:</b>	Store vial at 4° C prior to restoration. For extended storage aliquot contents and freeze at -20° C or below. Avoid cycles of freezing and thawing. Centrifuge product if not completely clear after standing at room temperature. This product is stable for several weeks at 4° C as an undiluted liquid. Dilute only prior to immediate use.
<b>Expiration:</b>	Expiration date is one (1) year from date of receipt.

## Images



### Western Blot

Western Blot of Rabbit anti-B-Phycoerythrin antibody. Lane 1: B-Phycoerythrin reduced. Lane 2: B-Phycoerythrin reduced. Lane 3: none. Load:  $\sim 1\mu\text{g}$  per lane. Primary antibody:  $\beta$ -Phycoerythrin antibody at 1:1000 for overnight at 4°C. Secondary antibody: Dylight 649 conjugated Donkey anti rabbit secondary antibody at 1:10,000 for 1.5 hrs at RT. Block: MB-070 overnight at 4°C. Predicted/Observed size: 18.5 kDa,  $\sim 25$  kDa for B-Phycoerythrin. Other band(s): none.

## References

- Martínez-Riaño A et al. Long-term retention of antigens in germinal centers is controlled by the spatial organization of the follicular dendritic cell network. *Nat Immunol.* (2023)
- Camara A et al. Lymph node mesenchymal and endothelial stromal cells cooperate via the RANK-RANKL cytokine axis to shape the sinusoidal macrophage niche. *Immunity.* (2019)
- Cremasco, V et al. B cell homeostasis and follicle confines are governed by fibroblastic reticular cells. *Nature Immunology* (2014)

## Disclaimer

This product is for research use only and is not intended for therapeutic or diagnostic applications. Please contact a technical service representative for more information. All products of animal origin manufactured by Rockland Immunochemicals are derived from starting materials of North American origin. Collection was performed in United States Department of Agriculture (USDA) inspected facilities and all materials have been inspected and certified to be free of disease and suitable for exportation. All properties listed are typical characteristics and are not specifications. All suggestions and data are offered in good faith but without guarantee as conditions and methods of use of our products are beyond our control. All claims must be made within 30 days following the date of delivery. The prospective user must determine the suitability of our materials before adopting them on a commercial scale. Suggested uses of our products are not recommendations to use our products in violation of any patent or as a license under any patent of Rockland Immunochemicals, Inc. If you require a commercial license to use this material and do not have one, then return this material, unopened to: Rockland Inc., P.O. BOX 5199, Limerick, Pennsylvania, USA.