



SZABO SCANDIC

Part of Europa Biosite

Produktinformation



Forschungsprodukte & Biochemikalien



Zellkultur & Verbrauchsmaterial



Diagnostik & molekulare Diagnostik



Laborgeräte & Service

Weitere Information auf den folgenden Seiten!
See the following pages for more information!



Lieferung & Zahlungsart

siehe unsere [Liefer- und Versandbedingungen](#)

Zuschläge

- Mindermengenzuschlag
- Trockeneiszuschlag
- Gefahrgutzuschlag
- Expressversand

SZABO-SCANDIC HandelsgmbH

Quellenstraße 110, A-1100 Wien

T. +43(0)1 489 3961-0

F. +43(0)1 489 3961-7

mail@szabo-scandic.com

www.szabo-scandic.com

[linkedin.com/company/szaboscandic](https://www.linkedin.com/company/szaboscandic) 

Datasheet for 101-4133**Bovine Serum Albumin Antibody****Overview**

| | |
|----------------------|--|
| Description: | Anti-Bovine Albumin (RABBIT) Antibody (BSA) - 101-4133 |
| Item No.: | 101-4133 |
| Size: | 2 mL |
| Applications: | ELISA, WB |
| Reactivity: | Bovine |
| Host Species: | Rabbit |

Product Details

| | |
|----------------------|---|
| Background: | Anti-Bovine Serum Albumin antibody detects BSA. Serum albumin is the main protein of plasma. It has a good binding capacity for water, Ca ²⁺ , Na ⁺ , K ⁺ , fatty acids, hormones, bilirubin and drugs. Its main function is the regulation of the colloidal osmotic pressure of blood. ALB is the major zinc transporter in plasma; it typically binds about 80% of all plasma zinc. BSA antibody is ideal for investigators involved in Cell Signaling, Neuroscience and Signal Transduction research. |
| Synonyms: | Rabbit Anti-Bovine Serum Albumin Antibody, Rabbit Anti-BSA, ALB antibody, Albumin antibody, Allergen Bos d 6 antibody, BSA antibody |
| Host Species: | Rabbit |
| Clonality: | Polyclonal |
| Format: | Antiserum |

Target Details

| | |
|------------------------|--|
| Gene Name: | ALB |
| Reactivity: | Bovine |
| Immunogen Type: | Native Protein |
| Immunogen: | Anti-Bovine Serum Albumin antibody was produced by repeated immunizations with Bovine Serum Albumin. |

Purity/Specificity: Bovine Serum Albumin antibody is supplied in the form of monospecific antiserum prepared by a delipidation and defibrination. Assay by immunoelectrophoresis resulted in a single precipitin arc against anti-rabbit serum, purified and partially purified Albumin [Bovine Serum]. Cross reactivity against Albumin from other tissues and species may occur but have not been specifically determined.

Relevant Links:

- [NCBI - CAA76847.1](#)
- [UniProtKB - P02769](#)
- [GeneID - 280717](#)

Application Details

| | |
|-----------------------------|--|
| Tested Applications: | ELISA, WB |
| Application Note: | Anti-Bovine Albumin antibody has been tested in ELISA and western blot and is suitable for IHC. The antibody may be suitable for other applications, although no supporting data is available. |
| Assay Dilutions: | All assays should be optimized by the user. Recommended dilutions (if any) may be listed below. |
| ELISA: | 1:20,000 - 1:100,000 |
| IHC: | 1:1,000 - 1:5,000 |
| WB: | 1:2,000 - 1:10,000 |

Formulation

| | |
|-------------------------------|--|
| Physical State: | Lyophilized |
| Concentration: | 85 mg/mL by Refractometry |
| Buffer: | 0.02 M Potassium Phosphate, 0.15 M Sodium Chloride, pH 7.2 |
| Preservative: | 0.01% (w/v) Sodium Azide |
| Stabilizer: | None |
| Reconstitution Volume: | 2.0 mL |
| Reconstitution Buffer: | Restore with deionized water (or equivalent) |

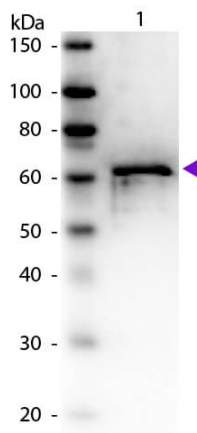
Shipping & Handling

Shipping Condition: Ambient

Storage Condition: Store vial at 4° C prior to restoration. For extended storage aliquot contents and freeze at -20° C or below. Avoid cycles of freezing and thawing. Centrifuge product if not completely clear after standing at room temperature. This product is stable for several weeks at 4° C as an undiluted liquid. Dilute only prior to immediate use.

Expiration: Expiration date is one (1) year from date of receipt.

Images



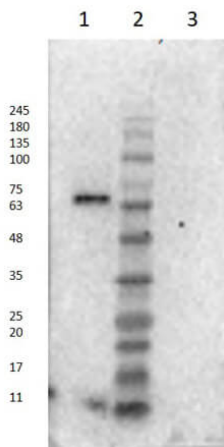
Western Blot

Western Blot of Rabbit anti-Bovine Serum Albumin antibody.

Lane 1: BSA (p/n 001-0133). Load: 50 ng per lane.

Primary antibody: BSA antibody at 1:1,000 for overnight at 4°C. Secondary antibody: Peroxidase rabbit secondary antibody (p/n 611-103-122) at 1:40,000 for 30 min at RT.

Block: 5% BLOTTO-TBS for 30 min at RT. Predicted/Observed size: 66 kDa, 66 kDa for BSA. Other band(s): None.



Western Blot

Western Blot of Rabbit anti-Bovine Serum Albumin antibody.

Lane 1: BSA (p/n 001-0133) Reduced [20ng]. Lane 2: Opal Prestained Molecular Weight Marker (p/n MB-210-0500).

Lane 3: BSA (p/n 001-0133) Non-Reduced [20ng]. Primary antibody: Rabbit anti-BSA antibody at 1:10,000 for overnight at 4°C. Secondary antibody: Goat Anti-Rabbit IgG HRP MX10 secondary antibody (p/n 611-103-122) at 1:70,000 for 30 min at RT. Block: 5% BLOTTO-TBS for 60 min at RT. Predicted/Observed size: 66 kDa, 66 kDa for BSA. Other band(s): None.

Disclaimer

This product is for research use only and is not intended for therapeutic or diagnostic applications. Please contact a technical service representative for more information. All products of animal origin manufactured by Rockland Immunochemicals are derived from starting materials of North American origin. Collection was performed in United States Department of Agriculture (USDA) inspected facilities and all materials have been inspected and certified to be free of disease and suitable for exportation. All properties listed are typical characteristics and are not specifications. All suggestions and data are offered in good faith but without guarantee as conditions and methods of use of our products are beyond our control. All claims must be made within 30 days following the date of delivery. The prospective user must determine the suitability of our materials before adopting them on a commercial scale. Suggested uses of our products are not recommendations to use our products in violation of any patent or as a license under any patent of Rockland Immunochemicals, Inc. If you require a commercial license to use this material and do not have one, then return this material, unopened to: Rockland Inc., P.O. BOX 5199, Limerick, Pennsylvania, USA.