



# SZABO SCANDIC

Part of Europa Biosite

## Produktinformation



Forschungsprodukte & Biochemikalien



Zellkultur & Verbrauchsmaterial



Diagnostik & molekulare Diagnostik



Laborgeräte & Service

Weitere Information auf den folgenden Seiten!  
See the following pages for more information!



### Lieferung & Zahlungsart

siehe unsere [Liefer- und Versandbedingungen](#)

### Zuschläge

- Mindermengenzuschlag
- Trockeneiszuschlag
- Gefahrgutzuschlag
- Expressversand

### SZABO-SCANDIC HandelsgmbH

Quellenstraße 110, A-1100 Wien

T. +43(0)1 489 3961-0

F. +43(0)1 489 3961-7

[mail@szabo-scandic.com](mailto:mail@szabo-scandic.com)

[www.szabo-scandic.com](http://www.szabo-scandic.com)

[linkedin.com/company/szaboscandic](https://www.linkedin.com/company/szaboscandic) 

## Datasheet for 200-101-077

## Protein A Antibody

### Overview

<b>Description:</b>	Anti-Protein A (GOAT) Antibody - 200-101-077
<b>Item No.:</b>	200-101-077
<b>Size:</b>	100 µg
<b>Applications:</b>	WB, IF
<b>Reactivity:</b>	Protein A
<b>Host Species:</b>	Goat

### Product Details

<b>Background:</b>	Anti-Protein A Antibody detects Protein A. Protein A is a 56 kDa surface protein originally found in the cell wall of the bacterium <i>Staphylococcus aureus</i> encoded by the <i>spa</i> gene. Protein A is an efficient binding protein to the immunoglobulins and is used in biochemical research because of its ability to bind. Protein A binds with high affinity to human IgG1 and IgG2 as well as mouse IgG2a and IgG2b. Protein A binds with moderate affinity to human IgM, IgA and IgE as well as to mouse IgG3 and IgG1. It does not react with human IgG3 or IgD, nor will it react to mouse IgM, IgA or IgE. Protein A is commonly used in bioprocessing and bioseparations.
<b>Synonyms:</b>	goat anti-Protein A Antibody, goat anti Protein A, goat anti PA
<b>Host Species:</b>	Goat
<b>Clonality:</b>	Polyclonal
<b>Format:</b>	IgG

### Target Details

<b>Reactivity:</b>	Protein A
<b>Immunogen Type:</b>	Native Protein
<b>Immunogen:</b>	Protein A [ <i>Staphylococcus aureus</i> ]

**Purity/Specificity:** Protein A Antibody is an IgG fraction antibody purified from monospecific antiserum by a multi-step process which includes delipidation, salt fractionation and ion exchange chromatography followed by extensive dialysis against the buffer stated above. Assay by immunoelectrophoresis resulted in a single precipitin arc against purified and partially purified Protein A [Staphylococcus aureus] and anti-Goat Serum. Cross reactivity against Protein A from other sources is unknown.

## Application Details

**Tested Applications:** WB

**Suggested Applications:** IF (Based on references)

**Application Note:** Anti-Protein A Antibody has been tested by western blot and is suitable for immunoprecipitation, immunodiffusion, conjugation and most immunological methods requiring high titer and specificity. Optimal concentration in immunoassays should be determined by the researcher.

**Assay Dilutions:** All assays should be optimized by the user. Recommended dilutions (if any) may be listed below.

**ELISA:** 1:20,000 - 1:100,000

**IP:** 1:1,000 - 1:5,000

**WB:** 1:2,000 - 1:10,000

## Formulation

**Physical State:** Liquid (sterile filtered)

**Concentration:** 1.0 mg/mL by UV absorbance at 280 nm

**Buffer:** 0.02 M Potassium Phosphate, 0.15 M Sodium Chloride, pH 7.2

**Preservative:** 0.01% (w/v) Sodium Azide

**Stabilizer:** None

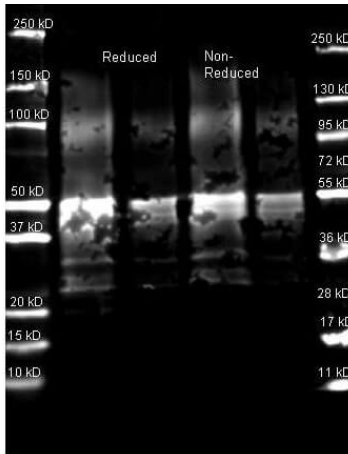
## Shipping & Handling

**Shipping Condition:** Dry Ice

**Storage Condition:** Store vial at -20° C prior to opening. Aliquot contents and freeze at -20° C or below for extended storage. Avoid cycles of freezing and thawing. Centrifuge product if not completely clear after standing at room temperature. This product is stable for several weeks at 4° C as an undiluted liquid. Dilute only prior to immediate use.

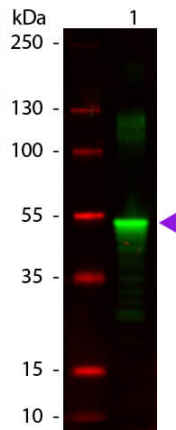
**Expiration:** Expiration date is one (1) year from date of receipt.

## Images



### Western Blot

Western Blot of Goat anti-Protein A Antibody. Lane 1: Protein A Reduced. Lane 2: Protein A Reduced. Lane 3: Protein A Non-Reduced. Lane 4: Protein A Non-Reduced. Load: Lane 1 and 3 - 1.0 µg per lane, Lane 2 and 4 - 0.25 µg per lane. Primary antibody: Protein A antibody at 1:5,000 for overnight at 4°C. Secondary antibody: DyLight™ 649 goat secondary antibody at 1:10,000 for 90 min at RT. Block: 5% BLOTTO overnight at 4°C. Predicted/Observed size: ~50 kDa for Protein A. Other band(s): Protein A splice variants and isoforms.



### Western Blot

Western Blot of Goat anti-Protein A Antibody. Lane 1: Protein A. Lane 2: None. Load: 50 ng per lane. Primary antibody: Protein A antibody at 1:1,000 overnight at 4°C. Secondary antibody: IRDye800® goat secondary antibody at 1:20,000 for 30 min at RT. Block: MB-070 for 30 min at RT. Predicted/Observed size: 43 kDa, 53 kDa for Protein A. Other band(s): Protein A splice variants and isoforms.

## References

- Galanzha, El et al. In vivo magnetic enrichment, photoacoustic diagnosis, and photothermal purging of infected blood using multifunctional gold and magnetic nanoparticles. *PLoS One* (2012)

## Disclaimer

This product is for research use only and is not intended for therapeutic or diagnostic applications. Please contact a technical service representative for more information. All products of animal origin manufactured by Rockland Immunochemicals are derived from starting materials of North American origin. Collection was performed in United States Department of Agriculture (USDA) inspected facilities and all materials have been inspected and certified to be free of disease and suitable for exportation. All properties listed are typical characteristics and are not specifications. All suggestions and data are offered in good faith but without guarantee as conditions and methods of use of our products are beyond our control. All claims must be made within 30 days following the date of delivery. The prospective user must determine the suitability of our materials before adopting them on a commercial scale. Suggested uses of our products are not recommendations to use our products in violation of any patent or as a license under any patent of Rockland Immunochemicals, Inc. If you require a commercial license to use this material and do not have one, then return this material, unopened to: Rockland Inc., P.O. BOX 5199, Limerick, Pennsylvania, USA.