



SZABO SCANDIC

Part of Europa Biosite

Produktinformation



Forschungsprodukte & Biochemikalien



Zellkultur & Verbrauchsmaterial



Diagnostik & molekulare Diagnostik



Laborgeräte & Service

Weitere Information auf den folgenden Seiten!
See the following pages for more information!



Lieferung & Zahlungsart

siehe unsere [Liefer- und Versandbedingungen](#)

Zuschläge

- Mindermengenzuschlag
- Trockeneiszuschlag
- Gefahrgutzuschlag
- Expressversand

SZABO-SCANDIC HandelsgmbH

Quellenstraße 110, A-1100 Wien

T. +43(0)1 489 3961-0

F. +43(0)1 489 3961-7

mail@szabo-scandic.com

www.szabo-scandic.com

[linkedin.com/company/szaboscandic](https://www.linkedin.com/company/szaboscandic) 

Datasheet for 200-101-077S**Protein A Antibody****Overview**

Description:	Anti-Protein A (GOAT) Antibody - 200-101-077S
Item No.:	200-101-077S
Size:	25 µL
Applications:	WB, IF
Reactivity:	Protein A
Host Species:	Goat

Product Details

Background:	Anti-Protein A Antibody detects Protein A. Protein A is a 56 kDa surface protein originally found in the cell wall of the bacterium <i>Staphylococcus aureus</i> encoded by the <i>spa</i> gene. Protein A is an efficient binding protein to the immunoglobulins and is used in biochemical research because of its ability to bind. Protein A binds with high affinity to human IgG1 and IgG2 as well as mouse IgG2a and IgG2b. Protein A binds with moderate affinity to human IgM, IgA and IgE as well as to mouse IgG3 and IgG1. It does not react with human IgG3 or IgD, nor will it react to mouse IgM, IgA or IgE. Protein A is commonly used in bioprocessing and bioseparations.
Synonyms:	goat anti-Protein A Antibody, goat anti Protein A, goat anti PA
Host Species:	Goat
Clonality:	Polyclonal
Format:	IgG

Target Details

Reactivity:	Protein A
Immunogen Type:	Native Protein
Immunogen:	Protein A [<i>Staphylococcus aureus</i>]

Purity/Specificity: Protein A Antibody is an IgG fraction antibody purified from monospecific antiserum by a multi-step process which includes delipidation, salt fractionation and ion exchange chromatography followed by extensive dialysis against the buffer stated above. Assay by immunoelectrophoresis resulted in a single precipitin arc against purified and partially purified Protein A [Staphylococcus aureus] and anti-Goat Serum. Cross reactivity against Protein A from other sources is unknown.

Application Details

Tested Applications: WB

Suggested Applications: IF (Based on references)

Application Note: Anti-Protein A Antibody has been tested by western blot and is suitable for immunoprecipitation, immunodiffusion, conjugation and most immunological methods requiring high titer and specificity. Optimal concentration in immunoassays should be determined by the researcher.

Assay Dilutions: All assays should be optimized by the user. Recommended dilutions (if any) may be listed below.

ELISA: 1:20,000 - 1:100,000

IP: 1:1,000 - 1:5,000

WB: 1:2,000 - 1:10,000

Formulation

Physical State: Liquid (sterile filtered)

Concentration: 1.0 mg/mL by UV absorbance at 280 nm

Buffer: 0.02 M Potassium Phosphate, 0.15 M Sodium Chloride, pH 7.2

Preservative: 0.01% (w/v) Sodium Azide

Stabilizer: None

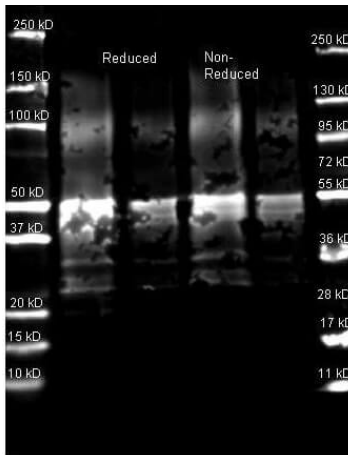
Shipping & Handling

Shipping Condition: Dry Ice

Storage Condition: Store vial at -20° C or below prior to opening. This vial contains a relatively low volume of reagent (25 µL). To minimize loss of volume dilute 1:10 by adding 225 µL of the buffer stated above directly to the vial. Recap, mix thoroughly and briefly centrifuge to collect the volume at the bottom of the vial. Use this intermediate dilution when calculating final dilutions as recommended below. Store the vial at -20°C or below after dilution. Avoid cycles of freezing and thawing.

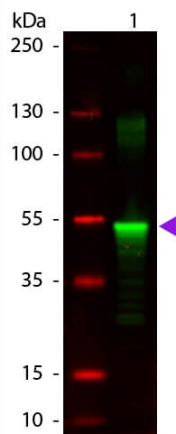
Expiration: Expiration date is three (3) months from date of receipt.

Images



Western Blot

Western Blot of Goat anti-Protein A Antibody. Lane 1: Protein A Reduced. Lane 2: Protein A Reduced. Lane 3: Protein A Non-Reduced. Lane 4: Protein A Non-Reduced. Load: Lane 1 and 3 - 1.0 µg per lane, Lane 2 and 4 - 0.25 µg per lane. Primary antibody: Protein A antibody at 1:5,000 for overnight at 4°C. Secondary antibody: DyLight™ 649 goat secondary antibody at 1:10,000 for 90 min at RT. Block: 5% BLOTTO overnight at 4°C. Predicted/Observed size: ~50 kDa for Protein A. Other band(s): Protein A splice variants and isoforms.



Western Blot

Western Blot of Goat anti-Protein A Antibody. Lane 1: Protein A. Lane 2: None. Load: 50 ng per lane. Primary antibody: Protein A antibody at 1:1,000 overnight at 4°C. Secondary antibody: IRDye800® goat secondary antibody at 1:20,000 for 30 min at RT. Block: MB-070 for 30 min at RT. Predicted/Observed size: 43 kDa, 53 kDa for Protein A. Other band(s): Protein A splice variants and isoforms.

References

- Galanzha, El et al. In vivo magnetic enrichment, photoacoustic diagnosis, and photothermal purging of infected blood using multifunctional gold and magnetic nanoparticles. *PloS One* (2012)

Disclaimer

This product is for research use only and is not intended for therapeutic or diagnostic applications. Please contact a technical service representative for more information. All products of animal origin manufactured by Rockland Immunochemicals are derived from starting materials of North American origin. Collection was performed in United States Department of Agriculture (USDA) inspected facilities and all materials have been inspected and certified to be free of disease and suitable for exportation. All properties listed are typical characteristics and are not specifications. All suggestions and data are offered in good faith but without guarantee as conditions and methods of use of our products are beyond our control. All claims must be made within 30 days following the date of delivery. The prospective user must determine the suitability of our materials before adopting them on a commercial scale. Suggested uses of our products are not recommendations to use our products in violation of any patent or as a license under any patent of Rockland Immunochemicals, Inc. If you require a commercial license to use this material and do not have one, then return this material, unopened to: Rockland Inc., P.O. BOX 5199, Limerick, Pennsylvania, USA.