



SZABO SCANDIC

Part of Europa Biosite

Produktinformation



Forschungsprodukte & Biochemikalien



Zellkultur & Verbrauchsmaterial



Diagnostik & molekulare Diagnostik



Laborgeräte & Service

Weitere Information auf den folgenden Seiten!
See the following pages for more information!



Lieferung & Zahlungsart

siehe unsere [Liefer- und Versandbedingungen](#)

Zuschläge

- Mindermengenzuschlag
- Trockeneiszuschlag
- Gefahrgutzuschlag
- Expressversand

SZABO-SCANDIC HandelsgmbH

Quellenstraße 110, A-1100 Wien

T. +43(0)1 489 3961-0

F. +43(0)1 489 3961-7

mail@szabo-scandic.com

www.szabo-scandic.com

[linkedin.com/company/szaboscandic](https://www.linkedin.com/company/szaboscandic) 

Datasheet for 200-106-240S

Fibrinogen Antibody Biotin Conjugated**Overview**

Description:	Anti-FIBRINOGEN (Human Plasma) (GOAT) Antibody Biotin Conjugated - 200-106-240S
Item No.:	200-106-240S
Size:	25 µL
Applications:	ELISA, IHC, WB
Reactivity:	Human
Host Species:	Goat

Product Details

Background:	Anti-Fibrinogen antibody has a dual function: yielding monomers that polymerize into fibrin and as a main protein of the blood coagulation system, it also functions as a cofactor in platelet aggregation. Fibrinogen clotting underlies pathogenesis of thromboembolism, MI, and thrombus formation. Fibrinogen activation is a major factor in the mechanism which causes inflammation, tumor growth and various additional diseases. These characteristics make Anti-Fibrinogen ideal for investigators interested in the fields of Cardiovascular or Metabolism research.
Synonyms:	goat anti-Fibrinogen Antibody biotin Conjugation, biotin Conjugated goat anti-Fibrinogen Antibody, FGA antibody, FGA protein antibody, FGB antibody, FGG antibody, Fib2 antibody, Fibrinogen A alpha polypeptide antibody, Fibrinogen A alpha polypeptide chain antibody, Fibrinogen alpha chain antibody
Host Species:	Goat
Conjugate:	Biotin
Clonality:	Polyclonal
Format:	IgG
F/P Ratio:	10-20

Target Details

Gene Name:	FGA
Reactivity:	Human

Immunogen Type:	Native Protein
Immunogen:	Fibrinogen [Human Plasma]
Purity/Specificity:	Anti-Fibrinogen antibody is an IgG fraction antibody purified from monospecific antiserum by a multi-step process which includes delipidation, salt fractionation and ion exchange chromatography followed by extensive dialysis against the buffer stated above. Assay by immunoelectrophoresis resulted in a single precipitin arc against anti-Biotin, anti-Goat Serum as well as purified and partially purified Fibrinogen [Human Plasma]. Cross reactivity against Fibrinogen from other sources is unknown.
Relevant Links:	<ul style="list-style-type: none">• 200-106-240 SDS• NCBI - NP_000499.1• UniProtKB - P02671• GeneID - 2243

Application Details

Tested Applications:	ELISA, IHC, WB
Application Note:	Anti-Fibrinogen Biotin antibody has been tested by ELISA, western blot, and immunohistochemistry. This product is assayed against 1.0 µg of Fibrinogen in a standard capture ELISA using Peroxidase Conjugated Streptavidin #S000-03 and ABTS (2,2'-azino-bis-[3-ethylbenthiiazoline-6-sulfonic acid]) code # ABTS-100 as a substrate for 30 minutes at room temperature. A working dilution of 1:50,000 to 1:250,000 of the reconstitution concentration is suggested for this product.
Assay Dilutions:	All assays should be optimized by the user. Recommended dilutions (if any) may be listed below.
ELISA:	1:2,000 - 1:10,000
IHC:	1:1,000 - 1:5,000
WB:	1:500 - 1:2,500

Formulation

Physical State:	Liquid (sterile filtered)
Concentration:	1.0 mg/mL by UV absorbance at 280 nm
Buffer:	0.02 M Potassium Phosphate, 0.15 M Sodium Chloride, pH 7.2
Preservative:	0.01% (w/v) Sodium Azide
Stabilizer:	10 mg/mL Bovine Serum Albumin (BSA) - Immunoglobulin and Protease free

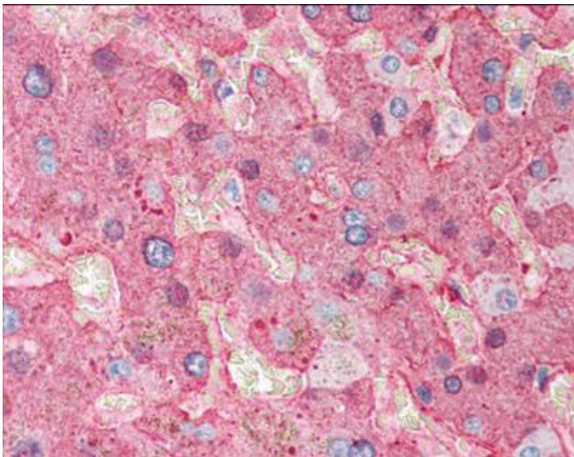
Shipping & Handling

Shipping Condition: Dry Ice

Storage Condition: Store vial at -20° C or below prior to opening. This vial contains a relatively low volume of reagent (25 µL). To minimize loss of volume dilute 1:10 by adding 225 µL of the buffer stated above directly to the vial. Recap, mix thoroughly and briefly centrifuge to collect the volume at the bottom of the vial. Use this intermediate dilution when calculating final dilutions as recommended below. Store the vial at -20°C or below after dilution. Avoid cycles of freezing and thawing.

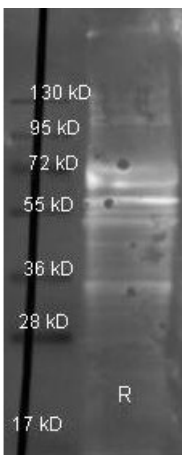
Expiration: Expiration date is one (1) year from date of receipt.

Images



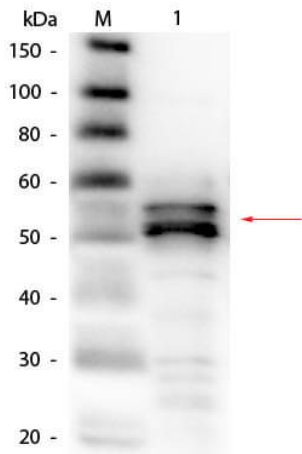
Immunohistochemistry

Immunohistochemistry of Goat Anti-Fibrinogen antibody.
Tissue: human liver tissue. Fixation: formalin fixed paraffin embedded. Antigen retrieval: not required. Primary antibody: Fibrinogen antibody at 1:500 for 1 h at RT. Secondary antibody: Peroxidase goat secondary antibody at 1:10,000 for 45 min at RT. Localization: Fibrinogen is localized in plasma. Staining: Fibrinogen as precipitated red signal with hematoxylin purple nuclear counterstain.



Western Blot

Western Blot of Goat anti-Fibrinogen antibody. Lane 1: Fibrinogen under reducing conditions. Lane 2: none. Load: 1 µg per lane. Primary antibody: Fibrinogen antibody at 1:3000 for overnight at 4°C. Secondary antibody: Dylight 488 conjugated Donkey anti goat secondary antibody at 1:10,000 for 45 min at RT. Block: TBS/MB-070 1 hr RT.

**Western Blot**

Western Blot of Goat anti-Fibrinogen Antibody (Human Plasma) Biotin Conjugated. Lane 1: Fibrinogen (Human Plasma). Load: 50 ng per lane. Primary antibody: Goat anti-Fibrinogen Antibody (Human Plasma) Biotin Conjugated at 1:1,000 overnight at 4°C. Secondary antibody: HRP streptavidin secondary antibody at 1:40,000 for 30 min at RT. Block: MB-070 for 30 minutes at RT. Predicted/Observed size: 56 kDa, 56 kDa for Fibrinogen β -chain.

Disclaimer

This product is for research use only and is not intended for therapeutic or diagnostic applications. Please contact a technical service representative for more information. All products of animal origin manufactured by Rockland Immunochemicals are derived from starting materials of North American origin. Collection was performed in United States Department of Agriculture (USDA) inspected facilities and all materials have been inspected and certified to be free of disease and suitable for exportation. All properties listed are typical characteristics and are not specifications. All suggestions and data are offered in good faith but without guarantee as conditions and methods of use of our products are beyond our control. All claims must be made within 30 days following the date of delivery. The prospective user must determine the suitability of our materials before adopting them on a commercial scale. Suggested uses of our products are not recommendations to use our products in violation of any patent or as a license under any patent of Rockland Immunochemicals, Inc. If you require a commercial license to use this material and do not have one, then return this material, unopened to: Rockland Inc., P.O. BOX 5199, Limerick, Pennsylvania, USA.