



# SZABO SCANDIC

Part of Europa Biosite

## Produktinformation



Forschungsprodukte & Biochemikalien



Zellkultur & Verbrauchsmaterial



Diagnostik & molekulare Diagnostik



Laborgeräte & Service

Weitere Information auf den folgenden Seiten!  
See the following pages for more information!



### Lieferung & Zahlungsart

siehe unsere [Liefer- und Versandbedingungen](#)

### Zuschläge

- Mindermengenzuschlag
- Trockeneiszuschlag
- Gefahrgutzuschlag
- Expressversand

### SZABO-SCANDIC HandelsgmbH

Quellenstraße 110, A-1100 Wien

T. +43(0)1 489 3961-0

F. +43(0)1 489 3961-7

[mail@szabo-scandic.com](mailto:mail@szabo-scandic.com)

[www.szabo-scandic.com](http://www.szabo-scandic.com)

[linkedin.com/company/szaboscandic](https://www.linkedin.com/company/szaboscandic) 

**Datasheet for B553-0500****Blotto B Pre-Mixed****Overview**

<b>Description:</b>	Blotto B Pre-Mixed - for a 1X Solution of Immunoanalytical Grade 1% Non-Fat Dry Milk, 1% BSA in TBS with Tween-20 - B553-0500
<b>Item No.:</b>	B553-0500
<b>Size:</b>	500 mL
<b>Applications:</b>	WB, ELISA

**Product Details**

<b>Background:</b>	Rockland Immunochemicals produces the following blocking buffer reagents: BSA, BLOTTO, BLOTTO A, BLOTTO B and Blocking Buffer for Fluorescent Western Blotting (see related products below). These products are intended to block non-specific binding of proteins in various immunological assays. Typically, western blotting and ELISA methods call for the addition of a blocking agent prior to and during incubation with primary antibody.
<b>Synonyms:</b>	Blotto B Pre-Mixed, TBS, 1% non-fat dry milk, 1% BSA, 0.05% TWEEN-20, blocking reagents for western or ELISA

**Target Details**

<b>Purity/Specificity:</b>	This product contains highly purified immunoanalytical grade non-fat dry milk and bovine serum albumin (protease and immunoglobulin-free BSA) dissolved in a solution of Tris buffered saline.
----------------------------	--

**Application Details**

<b>Tested Applications:</b>	WB
<b>Suggested Applications:</b>	ELISA (Based on references)

**Application Note:** Use Rockland's BLOTTO whenever procedures call for immunoanalytical grade non-fat dry milk. Alternative blocking agents such as BLOTTO A (solution of TBS, 5% non-fat dry milk and 0.05% Tween-20) and BLOTTO B (solution of TBS, 1% non-fat dry milk, 1% BSA and 0.05% Tween-20) are also available. BLOTTO A is a convenient general purpose blocking agent. BLOTTO B is recommended for blocking when phospho specific antibodies are used. BLOTTO A and BLOTTO B provide Tween-20 in a separate vial in liquid form (p/n TW0025). Users should consider the addition of Tween-20, protease inhibitors and phosphatase inhibitors when required. Typically 50 mM NaF can be added to BLOTTO solutions to inhibit phosphatase activity. We recommend using 1X working solutions of BLOTTO A or BLOTTO B directly for blocking purposes and primary antibody dilution and incubation.

**Assay Dilutions:** All assays should be optimized by the user. Recommended dilutions (if any) may be listed below.

**ELISA:** User Optimized

**WB:** User Optimized

## Formulation

**Physical State:** Lyophilized

**Concentration:** 1X

**Preservative:** None

**Reconstitution Buffer:** Restore with deionized water (or equivalent)

## Shipping & Handling

**Shipping Condition:** Ambient

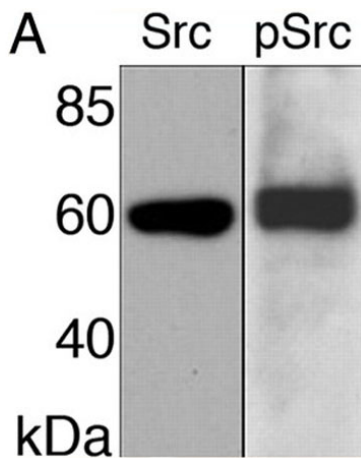
**Storage Condition:** Store container at room temperature prior to opening. After reconstitution, use blocking buffers immediately. Working solutions may be stored at 4° C for up to four (4) days. Solutions containing BLOTTO may be frozen. Contains TBS, 1% non-fat dry milk and 1% BSA. Adding the entire contents of the attached vial containing 25% TWEEN-20 (using a transfer pipette) to 500 ml of BLOTTO B results in a final concentration of 0.05% TWEEN-20. Mix well prior to use. The resulting buffer is a 1X working solution.

**Expiration:** Expiration date is one (1) year from date of receipt.

## Images

**Bottle**

Blotto B Pre-Mixed - for a 1X Solution of Immunoanalytical Grade 1% Non-Fat Dry Milk, 1% BSA in TBS with Tween-20

**Western Blot**

Detection of Src-related proteins in the developing ENS. A, Western blot of Manduca embryonic gut tissue using antibodies against inactive (pan) Src and phosphorylated Src (pSrc; anti-pY416). Both antibodies detect an ~60 kDa band (the predicted size of both MsSrc isoforms). Immunoblots were preblocked for 1 h using Blotto B solution (p/n B553-0500), incubated with anti-Src (1:2000) or anti-pSrc (1:1000) antibodies overnight at 4°C, rinsed, and incubated with secondary antibodies conjugated to horseradish peroxidase. Figure 3. PMID: 19295147.

**References**

- Chaudhuri R et al. Sputum matrix metalloproteinase-12 in patients with chronic obstructive pulmonary disease and asthma: relationship to disease severity. *J Allergy Clin Immunol.* (2012)
- LaPan P et al. Optimization of total protein and activity assays for the detection of MMP-12 in induced human sputum. *BMC Pulm Med.* (2010)
- Coate TM et al. Reverse signaling by glycosylphosphatidylinositol-linked Manduca ephrin requires a SRC family kinase to restrict neuronal migration in vivo. *The Journal of Neuroscience : the Official Journal of the Society for Neuroscience* (2009)

**Disclaimer**

This product is for research use only and is not intended for therapeutic or diagnostic applications. Please contact a technical service representative for more information. All products of animal origin manufactured by Rockland Immunochemicals are derived from starting materials of North American origin. Collection was performed in United States Department of Agriculture (USDA) inspected facilities and all materials have been inspected and certified to be free of disease and suitable for exportation. All properties listed are typical characteristics and are not specifications. All suggestions and data are offered in good faith but without guarantee as conditions and methods of use of our products are beyond our control. All claims must be made within 30 days following the date of delivery. The prospective user must determine the suitability of our materials before adopting them on a commercial scale. Suggested uses of our products are not recommendations to use our products in violation of any patent or as a license under any patent of Rockland Immunochemicals, Inc. If you require a commercial license to use this material and do not have one, then return this material, unopened to: Rockland Inc., P.O. BOX 5199, Limerick, Pennsylvania, USA.