



SZABO SCANDIC

Part of Europa Biosite

Produktinformation



Forschungsprodukte & Biochemikalien



Zellkultur & Verbrauchsmaterial



Diagnostik & molekulare Diagnostik



Laborgeräte & Service

Weitere Information auf den folgenden Seiten!
See the following pages for more information!



Lieferung & Zahlungsart

siehe unsere [Liefer- und Versandbedingungen](#)

Zuschläge

- Mindermengenzuschlag
- Trockeneiszuschlag
- Gefahrgutzuschlag
- Expressversand

SZABO-SCANDIC HandelsgmbH

Quellenstraße 110, A-1100 Wien

T. +43(0)1 489 3961-0

F. +43(0)1 489 3961-7

mail@szabo-scandic.com

www.szabo-scandic.com

[linkedin.com/company/szaboscandic](https://www.linkedin.com/company/szaboscandic) 

Datasheet for C206-0005**Hamster Complement (Lyophilized) With Diluent****Overview**

Description:	Hamster Complement (Lyophilized) with DILUENT - C206-0005
Item No.:	C206-0005
Size:	5 mL
Origin:	Hamster

Product Details

Synonyms:	Complement system, tissue macrophages, blood monocytes, protease C3-convertase, mannose-binding lectin pathway, C3, C3a, C3b, C5a, C5b, C6, C7, C8, and polymeric C9, cascade cleavage and activation events, recruit inflammatory cells, anaphylatoxin
Species of Origin:	Hamster

Application Details

Application Note:	pH: normal Immuno-electrophoresis: normal Hemoglobin: normal IgG Concentration: normal Immuno-electrophoresis: normal
Assay Dilutions:	All assays should be optimized by the user. Recommended dilutions (if any) may be listed below.

Tissue Data

Tissue Type:	Complement
Sex:	Mixed
Strain:	Hamster - Mixed

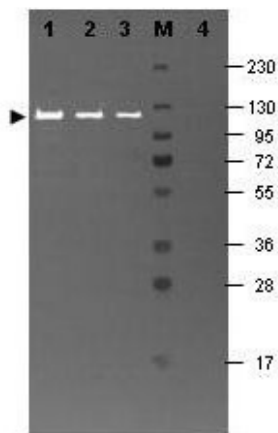
Formulation

Physical State:	Lyophilized
Concentration:	85 mg/mL by Refractometry
Sterility:	Non-sterile
Reconstitution Volume:	5.0 mL
Reconstitution Buffer:	Restore with Diluent

Shipping & Handling

Shipping Condition:	Ambient
Storage Condition:	Store vial at 4° C prior to restoration. Aliquot contents and freeze at -70° C or below. Avoid cycles of freezing and thawing. Centrifuge product if not completely clear after standing at room temperature. COMPLEMENT IS A TEMPERATURE SENSITIVE PRODUCT. IMPROPER STORAGE WILL INACTIVATE COMPLEMENT ACTIVITY.
Expiration:	Expiration date is one (1) year from date of receipt.

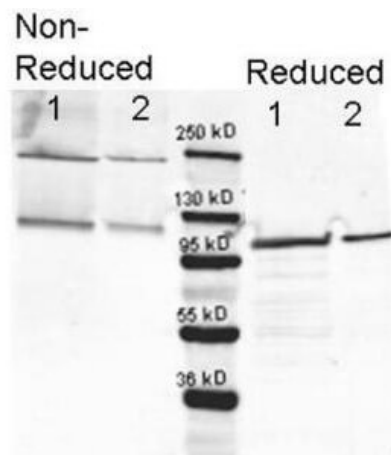
Images



Western Blot


Western Blot

Western blot using Rockland's anti- β -Galactosidase antibody shows detection of a band at \sim 117 kDa (lane 1) corresponding to β -Gal present in a partially purified preparation (arrowhead). Approximately 1 μ g of protein was resolved on a 4-20% Tris-Glycine gel by SDS-PAGE and transferred onto nitrocellulose. After blocking, the membrane was probed with the primary antibody diluted to 1:1,000. Reaction occurred overnight at 4° C followed by washes and reaction with a 1:10,000 dilution of IRDye® 800 conjugated Gt-a-Rabbit IgG (H&L) MX10 (611-132-122) for 45 min at room temperature (800 nm channel, green). Molecular weight estimation was made by comparison to prestained MW markers in lane M (700 nm channel, red). IRDye® 800 fluorescence image was captured using the Odyssey® Infrared Imaging System developed by LI-COR. IRDye is a trademark of LI-COR, Inc. Other detection systems will yield similar results.

Western Blot

Disclaimer

This product is for research use only and is not intended for therapeutic or diagnostic applications. Please contact a technical service representative for more information. All products of animal origin manufactured by Rockland Immunochemicals are derived from starting materials of North American origin. Collection was performed in United States Department of Agriculture (USDA) inspected facilities and all materials have been inspected and certified to be free of disease and suitable for exportation. All properties listed are typical characteristics and are not specifications. All suggestions and data are offered in good faith but without guarantee as conditions and methods of use of our products are beyond our control. All claims must be made within 30 days following the date of delivery. The prospective user must determine the suitability of our materials before adopting them on a commercial scale. Suggested uses of our products are not recommendations to use our products in violation of any patent or as a license under any patent of Rockland Immunochemicals, Inc. If you require a commercial license to use this material and do not have one, then return this material, unopened to: Rockland Inc., P.O. BOX 5199, Limerick, Pennsylvania, USA.