



# SZABO SCANDIC

Part of Europa Biosite

## Produktinformation



Forschungsprodukte & Biochemikalien



Zellkultur & Verbrauchsmaterial



Diagnostik & molekulare Diagnostik



Laborgeräte & Service

Weitere Information auf den folgenden Seiten!  
See the following pages for more information!



### Lieferung & Zahlungsart

siehe unsere [Liefer- und Versandbedingungen](#)

### Zuschläge

- Mindermengenzuschlag
- Trockeneiszuschlag
- Gefahrgutzuschlag
- Expressversand

### SZABO-SCANDIC HandelsgmbH

Quellenstraße 110, A-1100 Wien

T. +43(0)1 489 3961-0

F. +43(0)1 489 3961-7

[mail@szabo-scandic.com](mailto:mail@szabo-scandic.com)

[www.szabo-scandic.com](http://www.szabo-scandic.com)

[linkedin.com/company/szaboscandic](https://www.linkedin.com/company/szaboscandic)

**Datasheet for D204-00-0050**

## Goat Serum Non-Sterile

### Overview

<b>Description:</b>	Goat Serum (Non-Sterile) - D204-00-0050
<b>Item No.:</b>	D204-00-0050
<b>Size:</b>	50 mL
<b>Applications:</b>	IF, Other
<b>Origin:</b>	Goat

### Product Details

<b>Background:</b>	Normal Goat Serum can be used as a blocking agent to treat plastic surfaces, membrane or tissue after they have been sensitized with primary antibody or antigen. It provides an alternative to bovine serum albumin (BSA) and non-fat dry milk. It is effective in reducing nonspecific binding of proteins to reaction surfaces, thereby maximizing signal-to-noise ratio. This blocking agent is recommended for use in immunoassays where the primary antibody was produced in goat, as a source of non-specific serum protein or on tissue for immunohistochemical applications. Normal Goat Serum is used as a component of bioassays, immunoassays or enzyme assays. Normal Goat Serum provides a broad spectrum of macromolecules, carrier proteins for lipid substances and trace elements, attachment and spreading factors, low molecular weight nutrients, and hormones and growth factors that promote cell growth and health. Normal Goat Serum is also available as a sterile preparation for use as a cell culture supplement. Normal Goat Serum is ideal for investigators in Cancer, Immunology and Cell Biology research.
<b>Synonyms:</b>	normal goat serum, NGS, blocking serum, goat serum for bioassay, control goat serum, non-sterile serum from goat, non-sterile goat serum
<b>Species of Origin:</b>	Goat

### Target Details

<b>Purity/Specificity:</b>	Goat serum was obtained from healthy non-immunized goats.
----------------------------	---

### Application Details

<b>Suggested Applications:</b>	IF, Other (Based on references)
--------------------------------	---------------------------------

---

<b>Application Note:</b>	pH: normal
	Immunoelectrophoresis: normal
	Hemoglobin: normal
	IgG Concentration: normal

---

**Assay Dilutions:** All assays should be optimized by the user. Recommended dilutions (if any) may be listed below.

---

<b>ELISA:</b>	User Optimized
<b>FC:</b>	User Optimized
<b>FLISA:</b>	User Optimized
<b>IF:</b>	User Optimized
<b>IHC:</b>	User Optimized
<b>IP:</b>	User Optimized
<b>WB:</b>	User Optimized

---

## Tissue Data

---

<b>Tissue Type:</b>	Serum
<b>Sex:</b>	Mixed
<b>Strain:</b>	Goat - Mixed

---

## Formulation

---

<b>Physical State:</b>	Liquid
<b>Concentration:</b>	85 mg/mL by Refractometry
<b>Buffer:</b>	None
<b>Sterility:</b>	Non-sterile
<b>Preservative:</b>	None
<b>Stabilizer:</b>	None

---

## Shipping & Handling

---

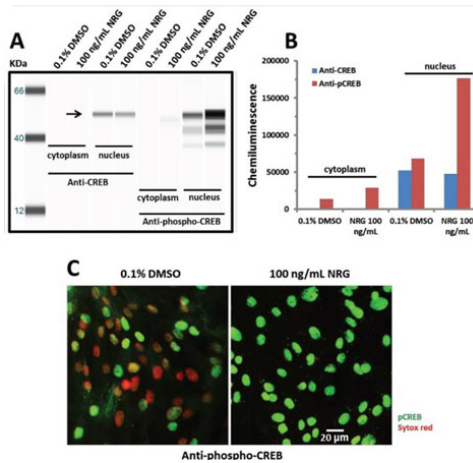
<b>Shipping Condition:</b>	Dry Ice
----------------------------	---------

---

**Storage Condition:** Store container at -20° C prior to opening. Avoid cycles of freezing and thawing.

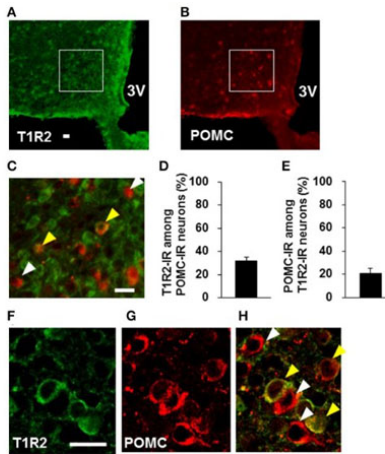
**Expiration:** Expiration date is one (1) year from date of receipt.

## Images



### Immunofluorescence Microscopy

Nuclear specific expression of CREB and activation after neuregulin-1 $\beta$  (NRG) treatment as shown by Wes™ Simple Western (A) and IN Cell Analyzer 2000 microscopic cell imaging (B). Cells were cultured more than 14 days prior to testing, and equilibrated to serum-free media for about 45 minutes before being exposed to 100 ng/mL NRG for 30 minutes. Upon completion of NRG treatment, cells were lysed and the fraction of cytoplasmic or nuclear proteins was extracted using the NE-PER Nuclear and Cytoplasmic Extraction kit for Wes™ Simple Western analysis (A). A band at 53 kDa was detected by both the pan- and phospho-CREB antibodies in nuclear, but not in cytoplasmic extracts (arrow). (B) Total CREB in the nucleus was not altered by treatment with 100 ng/mL NRG, whereas NRG treatment increased phosphorylated CREB by approximately 160% compared to the 0.1% DMSO group. Cells were fixed and stained with anti-phospho-CREB and Sytox Red (nuclear stain) for immunofluorescence using the IN Cell Analyzer 2000 system for imaging (C). Cells were treated with 0.1% DMSO or 100 ng/mL NRG as described for panel A. Images were acquired using the IN Cell Analyzer 2000 instrument and image analysis was performed using the IN Cell Workstation. Nuclear staining for phospho-CREB was clearly increased after treatment with 100 ng/mL NRG as seen by the increase in pCREB imaged in the green channel. Note the lack of phospho-CREB in many nuclei that stain only in the red (Sytox Red) channel in the DMSO control image. Based on analyzing more than 3,400 cells per group, treatment with NRG increased the average nuclear intensity of phospho-CREB by approximately 94% compared to the 0.1% DMSO treated cells, similar to the Wes data. 3% goat serum (p/n D204-00-0050) incubated for 1 hour at room temperature to block non-specific binding. Figure 16. PMID: 26331525.

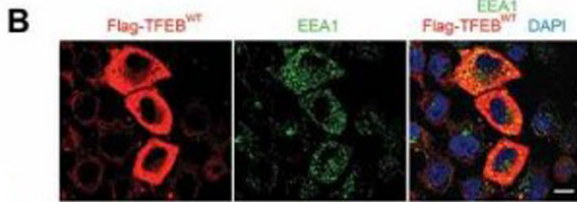


### Immunofluorescence Microscopy

Distribution of T1R2 on POMC neurons in the ARC. Blocked with 1.5% normal goat serum (p/n D204-00-0050). T1R2 (A) and POMC (B) immunofluorescent images and their merged image with high magnification (C). (D) Percentage of T1R2-immunoreactive (IR) neurons among POMC-IR neurons in the ARC (n = 3 brains). (E) Percentage of POMC-IR neurons among T1R2-IR neurons in the ARC (n = 3 brains). Confocal images of T1R2 (F) and POMC (G) immunofluorescent and their merged image (H). White arrowhead indicates non-colocalizing POMC-IR neuron, and yellow arrowhead indicates a colocalizing neuron. Scale bar; 20 μm. Graphs show mean ± SEM. Figure 6. PMID: 27877104.

### Immunofluorescence Microscopy

Overexpression of TFEB stimulates cellular endocytosis. (b) Immunofluorescence images represent HeLa cells transiently transfected with WT Flag-TFEB for 48 h and immunostained for EEA1. Flag-TFEB-expressing cells showed a significant increase in the levels of EEA1-positive endosomes as compared to untransfected, neighboring cells. HEK293T cells transiently transfected with constitutively active TFEB S211A also showed an increased level of EEA1 expression. Cultures were rinsed in PBS and blocked in 5% normal goat serum (p/n D204-00-0100), 0.5% BSA, and 0.5% Triton X-100 in PBS for 45 min at room temperature. Fig 1. PMID: 30145926.



### Bottle

Normal Goat Serum can be used as a blocking agent to treat plastic surfaces, membrane or tissue after they have been sensitized with primary antibody or antigen. It provides an alternative to bovine serum albumin (BSA) and non-fat dry milk. It is effective in reducing nonspecific binding of proteins to reaction surfaces, thereby maximizing signal-to-noise ratio. This blocking agent is recommended for use in immunoassays where the primary antibody was produced in goat, as a source of non-specific serum protein or on tissue for immunohistochemical applications.

## References

- Nnah IC et al. TFEB-driven endocytosis coordinates MTORC1 signaling and autophagy. *Autophagy*. (2019)
- Kohno, D et al. Sweet Taste Receptor Serves to Activate Glucose- and Leptin-Responsive Neurons in the Hypothalamic Arcuate Nucleus and Participates in Glucose Responsiveness. *Frontiers in Neuroscience* (2016)
- Guo, L et al. Use of Human Induced Pluripotent Stem Cell-Derived Cardiomyocytes (hiPSC-CMs) to Monitor Compound Effects on Cardiac Myocyte Signaling Pathways. *Current Protocols in Chemical Biology* (2015)

## Disclaimer

This product is for research use only and is not intended for therapeutic or diagnostic applications. Please contact a technical service representative for more information. All products of animal origin manufactured by Rockland Immunochemicals are derived from starting materials of North American origin. Collection was performed in United States Department of Agriculture (USDA) inspected facilities and all materials have been inspected and certified to be free of disease and suitable for exportation. All properties listed are typical characteristics and are not specifications. All suggestions and data are offered in good faith but without guarantee as conditions and methods of use of our products are beyond our control. All claims must be made within 30 days following the date of delivery. The prospective user must determine the suitability of our materials before adopting them on a commercial scale. Suggested uses of our products are not recommendations to use our products in violation of any patent or as a license under any patent of Rockland Immunochemicals, Inc. If you require a commercial license to use this material and do not have one, then return this material, unopened to: Rockland Inc., P.O. BOX 5199, Limerick, Pennsylvania, USA.