



SZABO SCANDIC

Part of Europa Biosite

Produktinformation



Forschungsprodukte & Biochemikalien



Zellkultur & Verbrauchsmaterial



Diagnostik & molekulare Diagnostik



Laborgeräte & Service

Weitere Information auf den folgenden Seiten!
See the following pages for more information!



Lieferung & Zahlungsart

siehe unsere [Liefer- und Versandbedingungen](#)

Zuschläge

- Mindermengenzuschlag
- Trockeneiszuschlag
- Gefahrgutzuschlag
- Expressversand

SZABO-SCANDIC HandelsgmbH

Quellenstraße 110, A-1100 Wien

T. +43(0)1 489 3961-0

F. +43(0)1 489 3961-7

mail@szabo-scandic.com

www.szabo-scandic.com

[linkedin.com/company/szaboscandic](https://www.linkedin.com/company/szaboscandic)

Datasheet for D220-00-0050

Donkey Serum Non-Sterile

Overview

Description:	Donkey Serum (Non-Sterile) - D220-00-0050
Item No.:	D220-00-0050
Size:	50 mL
Applications:	IF, IHC
Origin:	Donkey

Product Details

Background:	Donkey serum is used as a component of bioassays, immunoassays or enzyme assays. Donkey serum provides a broad spectrum of macromolecules, carrier proteins for lipoid substances and trace elements, attachment and spreading factors, low molecular weight nutrients, and hormones and growth factors that promote cell growth and health. Donkey serum is also available as a sterile preparation for use as a cell culture supplement.
Synonyms:	Donkey serum for bioassay, control donkey serum, non sterile serum from donkey
Species of Origin:	Donkey

Application Details

Suggested Applications:	IF, IHC (Based on references)
Application Note:	pH: normal Immunoelectrophoresis: normal Hemoglobin: normal IgG Concentration: normal
Assay Dilutions:	All assays should be optimized by the user. Recommended dilutions (if any) may be listed below.

Tissue Data

Tissue Type: Serum

Sex: Mixed

Strain: Donkey - Mixed

Formulation

Physical State: Liquid

Concentration: 90 mg/mL by Refractometry

Buffer: None

Sterility: Non-sterile

Preservative: None

Stabilizer: None

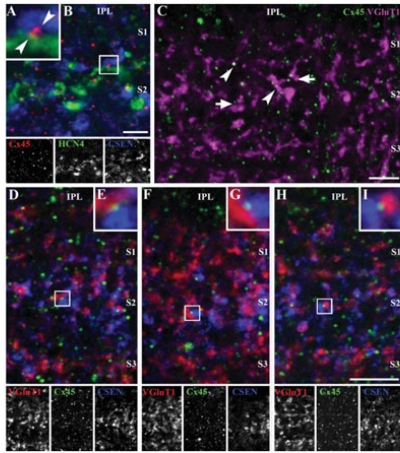
Shipping & Handling

Shipping Condition: Dry Ice

Storage Condition: Store container at -20° C prior to opening. Avoid cycles of freezing and thawing.

Expiration: Expiration date is one (1) year from date of receipt.

Images



Immunofluorescence Microscopy

Cx45 distribution in the inner plexiform layer. A,B: Magnification of confocal scans (0.5 μm) focused on layer S1/S2 in the IPL stained for HCN4, CSEN, and Cx45. Cx45-positive puncta were found between HCN4-labeled axon terminal processes (green) and CSEN-positive processes (blue; A, arrowheads). C: Retina vertical sections were stained for VGlut1 (magenta), a marker for axon terminals of bipolar cells, and Cx45 (green). In single confocal scans (0.5 μm), Cx45-positive puncta were found on (arrowheads) but not between adjacent VGlut1-labeled structures (arrows) in layer S1/S2. D–I: Three examples of magnified single scans (0.5 μm) of layer S1/S2 in the IPL stained for VGlut1 (red), CSEN (blue), and Cx45 (green). Cx45-positive puncta are located between VGlut1-positive and CSEN-positive but VGlut1-negative processes (E,G,I). Scale bars =2μm in B; 5μm in C,D,F,H). Vertical sections and whole mounts were blocked with either CTA (5% ChemiBLOCKER; 0.5% Triton X-100 and 0.05% NaN3) or 10% normal donkey serum (p/n D220-00-0050) in PB for at least 30 minutes at room temperature

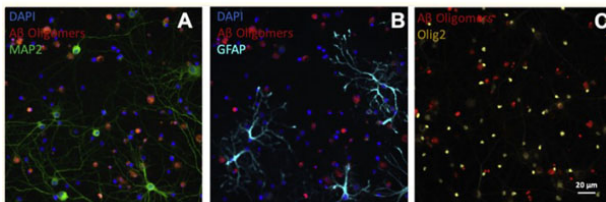
Figure 7. PMID: 21192077.

Immunofluorescence Microscopy

Cellular composition of 384-well DIV21 cultures. Approximately 20–35 % of the cells in these cultures are neurons (MAP2-positive cells, A), 7% ± 2% are astrocytes (GFAP-positive cells, B) and 36 % ± 7% are oligodendrocytes (oligo-2 positive cells, C). Scale bar for all images is shown in C (20 μm).

Cells were fixed with 3.75 % formaldehyde and blocking was performed with 5% normal donkey serum (GFAP experiments only; p/n D220-00-0100).

Fig. 3. PMID: 33836174.



**Bottle**

Donkey serum is used as a component of bioassays, immunoassays or enzyme assays. Donkey serum provides a broad spectrum of macromolecules, carrier proteins for lipid substances and trace elements, attachment and spreading factors, low molecular weight nutrients, and hormones and growth factors that promote cell growth and health. Donkey serum is available as a sterile preparation for use as a cell culture supplement. Additionally sold as 100 mL unit.

References

- LaBarbera KM et al. Modeling the mature CNS: A predictive screening platform for neurodegenerative disease drug discovery. *J Neurosci Methods*. (2021)
- Linders, PTA et al. Congenital disorder of glycosylation caused by starting site-specific variant in syntaxin-5. *Nature Communications* (2021)
- Hilgen G et al. Subcellular distribution of connexin45 in OFF bipolar cells of the mouse retina. *J Comp Neurol*. (2011)

Disclaimer

This product is for research use only and is not intended for therapeutic or diagnostic applications. Please contact a technical service representative for more information. All products of animal origin manufactured by Rockland Immunochemicals are derived from starting materials of North American origin. Collection was performed in United States Department of Agriculture (USDA) inspected facilities and all materials have been inspected and certified to be free of disease and suitable for exportation. All properties listed are typical characteristics and are not specifications. All suggestions and data are offered in good faith but without guarantee as conditions and methods of use of our products are beyond our control. All claims must be made within 30 days following the date of delivery. The prospective user must determine the suitability of our materials before adopting them on a commercial scale. Suggested uses of our products are not recommendations to use our products in violation of any patent or as a license under any patent of Rockland Immunochemicals, Inc. If you require a commercial license to use this material and do not have one, then return this material, unopened to: Rockland Inc., P.O. BOX 5199, Limerick, Pennsylvania, USA.