



SZABO SCANDIC

Part of Europa Biosite

Produktinformation



Forschungsprodukte & Biochemikalien



Zellkultur & Verbrauchsmaterial



Diagnostik & molekulare Diagnostik



Laborgeräte & Service

Weitere Information auf den folgenden Seiten!
See the following pages for more information!



Lieferung & Zahlungsart

siehe unsere [Liefer- und Versandbedingungen](#)

Zuschläge

- Mindermengenzuschlag
- Trockeneiszuschlag
- Gefahrgutzuschlag
- Expressversand

SZABO-SCANDIC HandelsgmbH

Quellenstraße 110, A-1100 Wien

T. +43(0)1 489 3961-0

F. +43(0)1 489 3961-7

mail@szabo-scandic.com

www.szabo-scandic.com

[linkedin.com/company/szaboscandic](https://www.linkedin.com/company/szaboscandic) 

Datasheet for D410-06-0050

Rat Plasma Non-Sterile In Sodium Heparin

Overview

Description:	Rat Plasma (Non-Sterile) in Sodium Heparin - D410-06-0050
Item No.:	D410-06-0050
Size:	50 mL
Origin:	Rat

Product Details

Synonyms:	rat plasma in Sodium Heparin, non-sterile plasma from rat with anticoagulant Sodium Heparin, non-sterile rat plasma
Species of Origin:	Rat

Target Details

Relevant Links:	<ul style="list-style-type: none">D410-06 SDS
------------------------	---

Application Details

Application Note:	pH: normal Immunoelectrophoresis: normal Hemoglobin: normal IgG Concentration: normal
Assay Dilutions:	All assays should be optimized by the user. Recommended dilutions (if any) may be listed below.

Tissue Data

Tissue Type:	Plasma
---------------------	--------

Sex:	Mixed
Strain:	Rat - Mixed

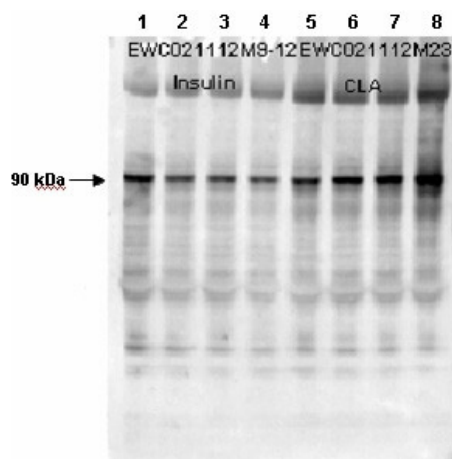
Formulation

Physical State:	Liquid
Concentration:	90 mg/mL by Refractometry
Anticoagulant:	Sodium Heparin
Sterility:	Non-sterile
Preservative:	None
Stabilizer:	None

Shipping & Handling

Shipping Condition:	Dry Ice
Storage Condition:	Store container at -20° C prior to opening. Avoid cycles of freezing and thawing.
Expiration:	Expiration date is one (1) year from date of receipt.

Images



Western Blot

Affinity Purified Phospho-specific antibody to human muscle Glycogen Synthase (GS) at pS640 was used at a 1:1000 dilution to detect human muscle GS by western blot. Approximately 12 ul of a mouse cardiac myocyte lysate was loaded per lane on a 4-20% Criterion gel for SDS-PAGE. Samples were either mock treated (lanes 1 and 5) or insulin treated at 10 nM, 100 nM and 1 μM (lanes 2, 3 and 4 respectively) for 15' or CLA treated at 4nM, 20 nM or 100 nM (lanes 6,7 and 8 respectively) for 45'. After washing, a 1:5,000 dilution of HRP conjugated Gt-a-Rabbit IgG (611-103-122) preceded color development using Amersham's substrate system. Other detection methods will yield similar results.

Disclaimer

This product is for research use only and is not intended for therapeutic or diagnostic applications. Please contact a technical service representative for more information. All products of animal origin manufactured by Rockland Immunochemicals are derived from starting materials of North American origin. Collection was performed in United States Department of Agriculture (USDA) inspected facilities and all materials have been inspected and certified to be free of disease and suitable for exportation. All properties listed are typical characteristics and are not specifications. All suggestions and data are offered in good faith but without guarantee as conditions and methods of use of our products are beyond our control. All claims must be made within 30 days following the date of delivery. The prospective user must determine the suitability of our materials before adopting them on a commercial scale. Suggested uses of our products are not recommendations to use our products in violation of any patent or as a license under any patent of Rockland Immunochemicals, Inc. If you require a commercial license to use this material and do not have one, then return this material, unopened to: Rockland Inc., P.O. BOX 5199, Limerick, Pennsylvania, USA.