



SZABO SCANDIC

Part of Europa Biosite

Produktinformation



Forschungsprodukte & Biochemikalien



Zellkultur & Verbrauchsmaterial



Diagnostik & molekulare Diagnostik



Laborgeräte & Service

Weitere Information auf den folgenden Seiten!
See the following pages for more information!



Lieferung & Zahlungsart

siehe unsere [Liefer- und Versandbedingungen](#)

Zuschläge

- Mindermengenzuschlag
- Trockeneiszuschlag
- Gefahrgutzuschlag
- Expressversand

SZABO-SCANDIC HandelsgmbH

Quellenstraße 110, A-1100 Wien

T. +43(0)1 489 3961-0

F. +43(0)1 489 3961-7

mail@szabo-scandic.com

www.szabo-scandic.com

[linkedin.com/company/szaboscandic](https://www.linkedin.com/company/szaboscandic) 

Datasheet for KCA215**GFP Chemiluminescent Western Blot Kit****Overview**

Description:	GFP Western Blot Kit: for GFP Chemiluminescent Western Blotting - KCA215
Item No.:	KCA215
Size:	1 Kit
Applications:	WB
Reactivity:	GFP, eGFP, rGFP

Product Details

Background:	GFP Chemiluminescent Western Blot Kit allows for the detection of GFP-tagged recombinant proteins present in cell lysates provided by the user. After protein separation by SDS-PAGE and transfer, the membrane is probed with monoclonal Anti-GFP. Detection of the membrane bound antibody-antigen complex is achieved by the addition of a secondary antibody conjugated to the enzyme horseradish peroxidase. The enzyme reacts with a specialized formulation of luminol, an extremely sensitive, non-radioactive substrate that emits light and allows visualization using X-ray film or other imaging methods, including highly sensitive CCD cameras and imaging systems.
Synonyms:	GFP Western Blotting Kit, GFP Chemiluminescent Kit, Green Fluorescent Protein Antibody Kit, Immunoblotting Kit, GFP, rGFP, eGFP
Clonality:	Monoclonal
Clone ID:	9F9.F9
Detection Kit Type:	Chemiluminescent Western Blot Kit

Target Details

Reactivity:	GFP, eGFP, rGFP
--------------------	-----------------

Purity/Specificity: Rockland Immunochemicals' Chemiluminescent Western Blot Kit for GFP combines all of the necessary reagents with a rapid proven protocol and the extremely high signal detection of our luminol chemiluminescent substrate for the detection of recombinant proteins containing GFP and its variants. The Chemiluminescent Western Blot Kit design includes straightforward procedures and color-coding to allow for ease of use. This kit contains: GFP protein, Mouse IgG control, mouse anti-GFP antibody, anti-mouse IgG peroxidase, Tween-20, BSA, and Femtomax, along with additional supplies and protocol; sufficient substrate for up to 30 mini blots at 7.5 x 8 cm² (1,800 cm²) and is stable for at least 1 year when stored as indicated.

Relevant Links:

- [Chemiluminescent Western Blot Kit Protocol: GFP Green Fluorescent Protein](#)

Application Details

Tested Applications:	WB
Application Note:	GFP Western Blot Kit is ideal for detection of GFP-tagged recombinant proteins by western blot. The GFP Western Blot kit makes use of Rockland's optimized anti-GFP antibody. The Chemiluminescent GFP Western Blot kit is useful for both western blotting and dot blotting methods. Please read the entire product insert prior to use.
Assay Dilutions:	All assays should be optimized by the user. Recommended dilutions (if any) may be listed below.
WB:	User Optimized

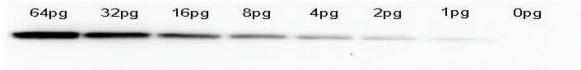
Formulation

Physical State:	n/a
Preservative:	Wash buffers MUST NOT contain SODIUM AZIDE or other inhibitors of peroxidase activity!

Shipping & Handling

Shipping Condition:	Wet Ice
Storage Condition:	See GFP Western Blot kit insert for complete instructions.
Expiration:	See kit insert for complete instructions.

Images



Western Blot

Western Blot of anti-GFP monoclonal antibody. Lane 1: 64pg of recombinant GFP protein (p/n 000-001-215) were spiked into a HeLa cell-derived lysates (p/n W09-000-364). Lane 2: 32pg of recombinant GFP protein were spiked into a HeLa cell-derived lysates. Lane 3: 16pg of recombinant GFP protein were spiked into a HeLa cell-derived lysates. Lane 4: 8pg of recombinant GFP protein were spiked into a HeLa cell-derived lysates. Lane 5: 4pg of recombinant GFP protein were spiked into a HeLa cell-derived lysates. Lane 6: 2pg of recombinant GFP protein were spiked into a HeLa cell-derived lysates. Lane 7: 1pg of recombinant GFP protein were spiked into a HeLa cell-derived lysates. Lane 8: 0pg of recombinant GFP protein were spiked into a HeLa cell-derived lysates. Primary antibody: anti-GFP monoclonal antibody at 1:400 for overnight at 4°C. Secondary antibody: HRP-conjugated anti-Mouse IgG (p/n 610-4302) was performed at a dilution of 1:20,000 for 1h at 4°C. Block: TTBS (p/n MB-013) supplemented with 1% BSA (p/n BSA-50) for 1 h at 4°C. Predicted/Observed size: 27 kDa for GFP. Other band(s): none.

Kit Box

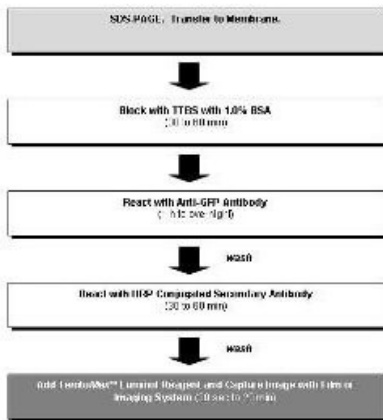
This product is assembled as a kit. See attached protocol or CofA for further details.





Bottle

Rockland Immunochemicals' Chemiluminescent Western Blot Kit for GFP combines all of the necessary reagents with a rapid proven protocol and the extremely high signal detection of our luminol chemiluminescent substrate for the detection of recombinant proteins containing GFP and its variants. The Chemiluminescent Western Blot Kit design includes straightforward procedures and color-coding to allow for ease of use. This kit contains sufficient substrate for up to 30 mini blots at 7.5 x 8 cm² (1,800 cm²) and is stable for at least 1 year when stored as indicated.



Western Blot

Flow Diagram for Chemiluminescent Western Blot Procedure. GFP Western Blot Kit is ideal for detection of GFP-tagged recombinant proteins by western blot. The GFP Western Blot kit makes use of Rockland's optimized anti-GFP antibody. The Chemiluminescent GFP Western Blot kit is useful for both western blotting and dot blotting methods. Please read the entire product insert prior to use.

Disclaimer

This product is for research use only and is not intended for therapeutic or diagnostic applications. Please contact a technical service representative for more information. All products of animal origin manufactured by Rockland Immunochemicals are derived from starting materials of North American origin. Collection was performed in United States Department of Agriculture (USDA) inspected facilities and all materials have been inspected and certified to be free of disease and suitable for exportation. All properties listed are typical characteristics and are not specifications. All suggestions and data are offered in good faith but without guarantee as conditions and methods of use of our products are beyond our control. All claims must be made within 30 days following the date of delivery. The prospective user must determine the suitability of our materials before adopting them on a commercial scale. Suggested uses of our products are not recommendations to use our products in violation of any patent or as a license under any patent of Rockland Immunochemicals, Inc. If you require a commercial license to use this material and do not have one, then return this material, unopened to: Rockland Inc., P.O. BOX 5199, Limerick, Pennsylvania, USA.