



# SZABO SCANDIC

Part of Europa Biosite

## Produktinformation



Forschungsprodukte & Biochemikalien



Zellkultur & Verbrauchsmaterial



Diagnostik & molekulare Diagnostik



Laborgeräte & Service

Weitere Information auf den folgenden Seiten!  
See the following pages for more information!



### Lieferung & Zahlungsart

siehe unsere [Liefer- und Versandbedingungen](#)

### Zuschläge

- Mindermengenzuschlag
- Trockeneiszuschlag
- Gefahrgutzuschlag
- Expressversand

### SZABO-SCANDIC HandelsgmbH

Quellenstraße 110, A-1100 Wien

T. +43(0)1 489 3961-0

F. +43(0)1 489 3961-7

[mail@szabo-scandic.com](mailto:mail@szabo-scandic.com)

[www.szabo-scandic.com](http://www.szabo-scandic.com)

[linkedin.com/company/szaboscandic](https://www.linkedin.com/company/szaboscandic) 

## Datasheet for KCAJ07

**E. coli HCP Chemiluminescent Western Blot Kit****Overview**

<b>Description:</b>	Chemiluminescent Western Blot Kit for detection of E.coli Host Cell Proteins (HCP) - KCAJ07
<b>Item No.:</b>	KCAJ07
<b>Size:</b>	1 Kit
<b>Applications:</b>	WB
<b>Reactivity:</b>	E. coli

**Product Details**

<b>Background:</b>	Host Cell Proteins are process-related impurities derived from a host cell expression system that may be present in trace amounts in a final drug substance. HCP Antibodies are used to detect impurities in biologically-based therapeutics. The antibody provided in this kit recognizes high and low molecular weight protein fractions from E.coli. The Anti-Host Cell Proteins Antibody provided in this kit detects over 300 E.coli proteins and is suitable for western blotting. This antibody has been validated by 2D electrophoresis western blot to assure highest possible coverage of E.coli HCP. Detecting impurities often unseen by 1-D electrophoresis, a 2D electrophoresis western blot analysis delivers more complete insight into the immunocoverage of protein components of the host cell lysate.
<b>Synonyms:</b>	Western Blotting Kit, Chemiluminescent Kit, Peroxidase Kit, Immunoblotting Kit, HCP, Host Cell Protein detection, HCP contaminants detection, ECP, ECP detection, ECP contaminants
<b>Detection Kit Type:</b>	Chemiluminescent Western Blot Kit

**Target Details**

<b>Reactivity:</b>	E. coli
<b>Immunogen:</b>	Anti-Host Cell Protein Antibody (p/n 100-401-J07) was prepared blending antibodies that have been separately developed by repeated immunizations in rabbit with a mixture of high molecular weight (HMW) and a mixture of low molecular weight (LMW) proteins from E.Coli (BL21).
<b>Purity/Specificity:</b>	This Chemiluminescent Western Blot Kit allows for the detection of E.coli host cell proteins present in samples provided by the user. Included in the kit along with Rabbit Anti-Host Cell Protein antibody is a positive protein control, Goat Anti-Rabbit IgG HRP Antibody, and Blocking Buffer.

**Relevant Links:**

- [Chemiluminescent Western Blot Kit for detection of E.coli HCP - KCAJ07](#)

## Application Details

**Tested Applications:**

WB

**Application Note:**

Use Rockland Immunochemicals' Chemiluminescent Western Blot Kit for detection of E.coli Host Cell Proteins. This kit is useful for both "Western blotting" and "dot blotting" methods. After protein separation and transfer, the membrane is probed with Anti-Host Cell Proteins Antibody. Detection of the membrane bound antibody-antigen complex is achieved by the addition of a secondary antibody conjugated to the enzyme horseradish peroxidase. The enzyme reacts with Fentomax, a specialized formulation of luminol which is an extremely sensitive, non-radioactive substrate that emits light (chemiluminescence) and allows visualization using X-ray film or other imaging methods, including highly sensitive CCD cameras and imaging systems. Fentomax reagent (FEMTOMAX-020 or FEMTOMAX-110) is not included with this kit and must be purchased separately.

**Assay Dilutions:**

All assays should be optimized by the user. Recommended dilutions (if any) may be listed below.

**WB:**

User Optimized by Kit Protocol

## Formulation

**Physical State:**

n/a

## Shipping & Handling

**Shipping Condition:**

Wet Ice

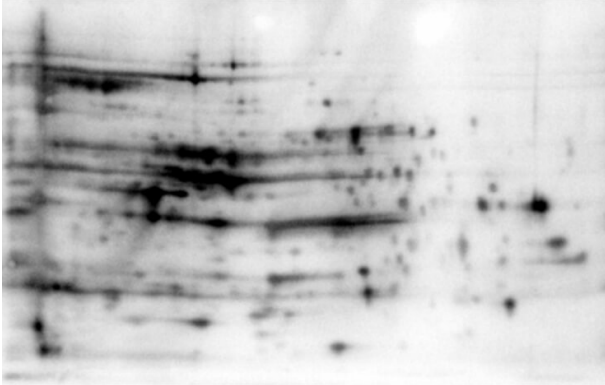
**Storage Condition:**

See kit insert for complete instructions.

**Expiration:**

See kit insert for complete instructions.

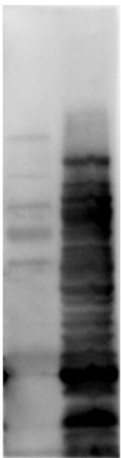
## Images

**Western Blot**

2D Western Blot of anti-E.coli HCP antibody. Load: 35  $\mu$ g Total HCP. pH: 5-8. Primary antibody: Rabbit anti-HCP antibody at 1:200 for overnight at 4°C. Secondary antibody: Goat anti-rabbit secondary antibody at 1:10,000 for 30 min at RT. Block: MB-070 for 1 hour at RT.

**Kit Box**

This product is assembled as a kit. See attached protocol or CofA for further details.

**Western Blot**

Western Blot of Rabbit anti-HCP antibody. Lane 1: Molecular Weight. Lane 2: Total HCP. Load: 10 $\mu$ g per lane. Primary antibody: Rabbit anti-HCP cocktail at 1:50 for overnight at 4°C. Secondary antibody: Goat anti-rabbit secondary antibody at 1:10,000 for 30 min at RT. Block: MB-070 for 1 hour at RT.

**Disclaimer**

This product is for research use only and is not intended for therapeutic or diagnostic applications. Please contact a technical service representative for more information. All products of animal origin manufactured by Rockland Immunochemicals are derived from starting materials of North American origin. Collection was performed in United States Department of Agriculture (USDA) inspected facilities and all materials have been inspected and certified to be free of disease and suitable for exportation. All properties listed are typical characteristics and are not specifications. All suggestions and data are offered in good faith but without guarantee as conditions and methods of use of our products are beyond our control. All claims must be made within 30 days following the date of delivery. The prospective user must determine the suitability of our materials before adopting them on a commercial scale. Suggested uses of our products are not recommendations to use our products in violation of any patent or as a license under any patent of Rockland Immunochemicals, Inc. If you require a commercial license to use this material and do not have one, then return this material, unopened to: Rockland Inc., P.O. BOX 5199, Limerick, Pennsylvania, USA.