



SZABO SCANDIC

Part of Europa Biosite

Produktinformation



Forschungsprodukte & Biochemikalien



Zellkultur & Verbrauchsmaterial



Diagnostik & molekulare Diagnostik



Laborgeräte & Service

Weitere Information auf den folgenden Seiten!
See the following pages for more information!



Lieferung & Zahlungsart

siehe unsere [Liefer- und Versandbedingungen](#)

Zuschläge

- Mindermengenzuschlag
- Trockeneiszuschlag
- Gefahrgutzuschlag
- Expressversand

SZABO-SCANDIC HandelsgmbH

Quellenstraße 110, A-1100 Wien

T. +43(0)1 489 3961-0

F. +43(0)1 489 3961-7

mail@szabo-scandic.com

www.szabo-scandic.com

[linkedin.com/company/szaboscandic](https://www.linkedin.com/company/szaboscandic) 

Datasheet for KOA0172

Human Flt-3ligand ELISA Kit**Overview**

Description:	Human Flt-3ligand AccuSignal ELISA Kit - KOA0172
Item No.:	KOA0172
Size:	1 Kit
Applications:	ELISA
Reactivity:	Human
Range:	15.6 pg/ml - 1000 pg/ml

Product Details

Background:	Fms-related tyrosine kinase 3 ligand(FLT3LG), also known as Flt-3ligand or FL, is a protein which in humans is encoded by the FLT3LG gene. It is mapped to 19q13.3. Flt-3ligand is a hematopoietic four helical bundle cytokine. It is structurally homologous to stem cell factor(SCF) and colony stimulating factor 1(CSF-1). In synergy with other growth factors, Flt-3ligand stimulates the proliferation and differentiation of various blood cell progenitors. Besides that, Flt-3ligand can control the development of Dendritic cells(DCs) and is particularly important for plasmacytoid DCs and CD8-positive classical DCs and their CD103-positive tissue counterparts. Flt-3ligand also can enhance the response of stem and primitive progenitor cells to other growth factors to generate all myeloid lineages except erythroid cells.
Synonyms:	Flt 3L, Flt3 L, FLT3 LG, Flt3L, FLT3LG, Fms related tyrosine kinase 3 ligand, SL cytokine
Detection Kit Type:	ELISA Kit
Detection Range:	15.6 pg/ml - 1000 pg/ml
Sensitivity:	<10 pg/ml

Target Details

Gene Name:	FLT3LG
Reactivity:	Human
Immunogen:	Expression system for standard: sf21; Immunogen sequence: T27-P185
Purity/Specificity:	Natural and recombinant human Flt-3ligand. There is no detectable cross-reactivity with other relevant proteins.

Relevant Links:	<ul style="list-style-type: none">• UniProtKB - P49771• NCBI - NP_001191431.1• GeneID - 2323• KOA0172 Protocol
------------------------	---

Application Details

Tested Applications:	ELISA
Application Note:	Useful in Sandwich ELISA for Quantitative Detection of Antigen. Aliquot 0.1ml per well of the 1000pg/ml, 500pg/ml, 250pg/ml, 125pg/ml, 62.5pg/ml, 31.2pg/ml, 15.6pg/ml human Flt-3ligand standard solutions into the precoated 96-well plate. Add 0.1ml of the sample diluent buffer into the control well (Zero well). Add 0.1ml of each properly diluted sample of human cell culture supernates, serum or plasma(heparin, EDTA, citrate) to each empty well. It is recommended that each human Flt-3ligand standard solution and each sample be measured in duplicate.
Assay Dilutions:	All assays should be optimized by the user. Recommended dilutions (if any) may be listed below.
Other:	DOE: 2-8° C - 12/06/2022 -20° C - 06/06/2023

Formulation

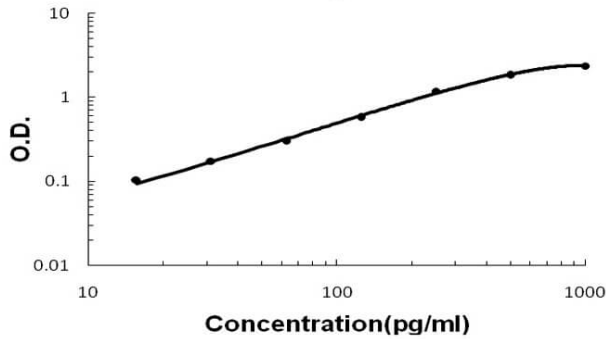
Concentration:	1 Kit
Anticoagulant:	Heparin Sodium

Shipping & Handling

Shipping Condition:	Wet Ice
Storage Condition:	Store vials at 4°C prior to opening. Centrifuge product if not completely clear after standing at room temperature. This product is stable for 6 months at 4°C as an undiluted liquid. Dilute only prior to immediate use. For extended storage freeze at -20°C or below for 12 months. Avoid cycles of freezing and thawing.
Expiration:	See kit insert for complete instructions.

Images

Human Flt-3ligand ELISA Kit



ELISA

Human Flt-3ligand AccuSignal ELISA Kit standard curve.

Assay Range: 15.6pg/ml-1000pg/ml. Sensitivity: <10pg/ml.

Disclaimer

This product is for research use only and is not intended for therapeutic or diagnostic applications. Please contact a technical service representative for more information. All products of animal origin manufactured by Rockland Immunochemicals are derived from starting materials of North American origin. Collection was performed in United States Department of Agriculture (USDA) inspected facilities and all materials have been inspected and certified to be free of disease and suitable for exportation. All properties listed are typical characteristics and are not specifications. All suggestions and data are offered in good faith but without guarantee as conditions and methods of use of our products are beyond our control. All claims must be made within 30 days following the date of delivery. The prospective user must determine the suitability of our materials before adopting them on a commercial scale. Suggested uses of our products are not recommendations to use our products in violation of any patent or as a license under any patent of Rockland Immunochemicals, Inc. If you require a commercial license to use this material and do not have one, then return this material, unopened to: Rockland Inc., P.O. BOX 5199, Limerick, Pennsylvania, USA.