



SZABO SCANDIC

Part of Europa Biosite

Produktinformation



Forschungsprodukte & Biochemikalien



Zellkultur & Verbrauchsmaterial



Diagnostik & molekulare Diagnostik



Laborgeräte & Service

Weitere Information auf den folgenden Seiten!
See the following pages for more information!



Lieferung & Zahlungsart

siehe unsere [Liefer- und Versandbedingungen](#)

Zuschläge

- Mindermengenzuschlag
- Trockeneiszuschlag
- Gefahrgutzuschlag
- Expressversand

SZABO-SCANDIC HandelsgmbH

Quellenstraße 110, A-1100 Wien

T. +43(0)1 489 3961-0

F. +43(0)1 489 3961-7

mail@szabo-scandic.com

www.szabo-scandic.com

[linkedin.com/company/szaboscandic](https://www.linkedin.com/company/szaboscandic) 

Datasheet for KOA0263**Rat MIP-3 alpha - CCL20 ELISA Kit****Overview**

Description:	Rat MIP-3 alpha/CCL20 AccuSignal ELISA Kit - KOA0263
Item No.:	KOA0263
Size:	1 Kit
Applications:	ELISA
Reactivity:	Rat
Range:	7.8 pg/ml - 500 pg/ml

Product Details

Background:	Macrophage Inflammatory Protein 3alpha(MIP3alpha), also called Chemokine, cc motif, ligand 20(CCL20). The MIP-3alpha/CCL20 gene was cloned and sequenced, revealing a four exon, three intron structure, and was localized by FISH analysis to 2q35-q36. MIP3alpha is predominantly expressed in lymph nodes, appendix, PBL, fetal liver, fetal lung and several cell lines. MIP3alpha/CCL20 and its receptor CCR6 are markedly up-regulated in psoriasis, and they may play a role in the recruitment of T cells to lesional psoriatic skin. And Alanine MIP-3alpha and Serine MIP-3alpha, the two forms of MIP3alpha, that differ by one amino acid at the predicted signal peptide cleavage site. Both of them were chemically synthesized and tested for biological activity. And both flu antigen plus IL-2-activated CD4(+) and CD8(+) T lymphoblasts and cord blood-derived dendritic cells responded to Ser and Ala MIP-3alpha.
Synonyms:	Beta chemokine exodus 1, Beta-chemokine exodus-1, C C motif chemokine 20, CC chemokine LARC, Ccl20, CCL20(2-70), CCL20_HUMAN, Chemokine (C C motif) ligand 20, CKb4, Exodus 1, LARC, Liver and activation regulated chemokine, Liver and activation-regulated chemokine, Macrophage inflammatory protein 3 alpha, MIP 3 alpha, MIP 3a, MIP-3-alpha, MIP3 alpha, MIP3A, MIP3alpha, SCYA20, Small inducible cytokine A20, Small inducible cytokine subfamily A (Cys Cys) member 20, Small-inducible cytokine A20, ST38
Detection Kit Type:	ELISA Kit
Detection Range:	7.8 pg/ml - 500 pg/ml
Sensitivity:	<1 pg/ml

Target Details**Gene Name:** CCL20

Reactivity:	Rat
Immunogen:	Expression system for standard: E.coli; Immunogen sequence: S27-M96
Purity/Specificity:	Natural and recombinant rat MIP-3 alpha. There is no detectable cross-reactivity with other relevant proteins.
Relevant Links:	<ul style="list-style-type: none">• UniProtKB - P97884• NCBI - NP_062106.1• GeneID - 29538• KOA0263 Protocol

Application Details

Tested Applications:	ELISA
Application Note:	Useful in Sandwich ELISA for Quantitative Detection of Antigen. Aliquot 0.1ml per well of the 500pg/ml, 250pg/ml, 125pg/ml, 62.5pg/ml, 31.3pg/ml, 15.6pg/ml, 7.8pg/ml rat MIP-3 alpha standard solutions into the precoated 96-well plate. Add 0.1ml of the sample diluent buffer into the control well (Zero well). Add 0.1ml of each properly diluted sample of rat cell culture supernates, serum or plasma(heparin, EDTA) to each empty well. It is recommended that each rat MIP-3 alpha standard solution and each sample be measured in duplicate.
Assay Dilutions:	All assays should be optimized by the user. Recommended dilutions (if any) may be listed below.

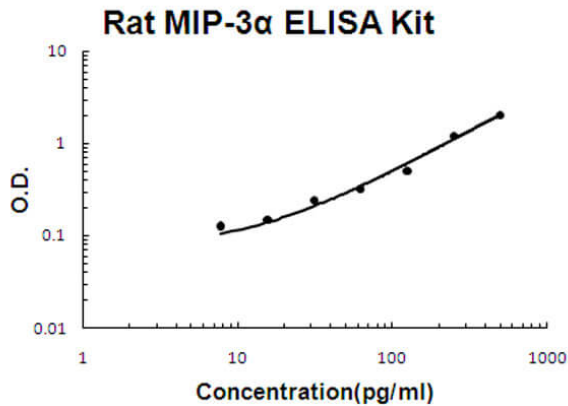
Formulation

Anticoagulant:	Heparin Sodium
-----------------------	----------------

Shipping & Handling

Shipping Condition:	Wet Ice
Storage Condition:	Store vials at 4°C prior to opening. Centrifuge product if not completely clear after standing at room temperature. This product is stable for 6 months at 4°C as an undiluted liquid. Dilute only prior to immediate use. For extended storage freeze at -20°C or below for 12 months. Avoid cycles of freezing and thawing.
Expiration:	See kit insert for complete instructions.

Images

**ELISA**

Rat MIP-3 alpha/CCL20 AccuSignal ELISA Kit standard curve.
Assay Range: 7.8pg/ml-500pg/ml. Sensitivity: <1pg/ml.

Disclaimer

This product is for research use only and is not intended for therapeutic or diagnostic applications. Please contact a technical service representative for more information. All products of animal origin manufactured by Rockland Immunochemicals are derived from starting materials of North American origin. Collection was performed in United States Department of Agriculture (USDA) inspected facilities and all materials have been inspected and certified to be free of disease and suitable for exportation. All properties listed are typical characteristics and are not specifications. All suggestions and data are offered in good faith but without guarantee as conditions and methods of use of our products are beyond our control. All claims must be made within 30 days following the date of delivery. The prospective user must determine the suitability of our materials before adopting them on a commercial scale. Suggested uses of our products are not recommendations to use our products in violation of any patent or as a license under any patent of Rockland Immunochemicals, Inc. If you require a commercial license to use this material and do not have one, then return this material, unopened to: Rockland Inc., P.O. BOX 5199, Limerick, Pennsylvania, USA.