



# SZABO SCANDIC

Part of Europa Biosite

## Produktinformation



Forschungsprodukte & Biochemikalien



Zellkultur & Verbrauchsmaterial



Diagnostik & molekulare Diagnostik



Laborgeräte & Service

Weitere Information auf den folgenden Seiten!  
See the following pages for more information!



### Lieferung & Zahlungsart

siehe unsere [Liefer- und Versandbedingungen](#)

### Zuschläge

- Mindermengenzuschlag
- Trockeneiszuschlag
- Gefahrgutzuschlag
- Expressversand

### SZABO-SCANDIC HandelsgmbH

Quellenstraße 110, A-1100 Wien

T. +43(0)1 489 3961-0

F. +43(0)1 489 3961-7

[mail@szabo-scandic.com](mailto:mail@szabo-scandic.com)

[www.szabo-scandic.com](http://www.szabo-scandic.com)

[linkedin.com/company/szaboscandic](https://www.linkedin.com/company/szaboscandic) 

## Datasheet for KOA0265

**Mouse CCL19 - MIP-3 beta ELISA Kit****Overview**

<b>Description:</b>	Mouse CCL19/MIP-3 beta AccuSignal ELISA Kit - KOA0265
<b>Item No.:</b>	KOA0265
<b>Size:</b>	1 Kit
<b>Applications:</b>	ELISA
<b>Reactivity:</b>	Mouse
<b>Range:</b>	15.6 pg/ml - 1000 pg/ml

**Product Details**

<b>Background:</b>	Chemokine(C-C motif) ligand 19 (CCL19) is a small cytokine belonging to the CC chemokine family that is also known as EBI1 ligand chemokine (ELC) and macrophage inflammatory protein-3-beta (MIP-3-beta). Using PCR of human-rodent hybrids, the CCL19 gene was mapped to human chromosome 9p13, and the CCL19 gene is not part of the CC chemokine gene cluster on chromosome 17. The cytokine encoded by this gene may play a role in normal lymphocyte recirculation and homing. It also plays an important role in trafficking of T cells in thymus, and in T cell and B cell migration to secondary lymphoid organs.
<b>Synonyms:</b>	Beta chemokine exodus 3, Beta-chemokine exodus-3, C C chemokine ligand 19, C-C motif chemokine 19, CC chemokine ligand 19, CCL19_HUMAN, Chemokine ligand 19, Chemokine ligand 19, Chemokine CC Motif Ligand 19, CK beta 11, CK beta-11, CKb11, EBI1 ligand chemokine, ELC, Epstein-Barr virus-induced molecule 1 ligand chemokine, Exodus 3, Macrophage inflammatory protein 3 beta, MIP 3 beta, MIP-3-beta, MIP-3B, MIP3 beta, MIP3B, SCYA19, Small inducible cytokine A19, Small-inducible cytokine A19
<b>Detection Kit Type:</b>	ELISA Kit
<b>Detection Range:</b>	15.6 pg/ml - 1000 pg/ml
<b>Sensitivity:</b>	<10 pg/ml

**Target Details**

<b>Gene Name:</b>	CCL19
<b>Reactivity:</b>	Mouse

<b>Immunogen:</b>	Expression system for standard: E.coli; Immunogen sequence: G26-S108
<b>Purity/Specificity:</b>	Natural and recombinant mouse CCL19. There is no detectable cross-reactivity with other relevant proteins.
<b>Relevant Links:</b>	<ul style="list-style-type: none"><li>• <a href="#">UniProtKB - O70460</a></li><li>• <a href="#">NCBI - NP_036018.1</a></li><li>• <a href="#">GenelD - 24047</a></li><li>• <a href="#">KOA0265 Protocol</a></li></ul>

## Application Details

<b>Tested Applications:</b>	ELISA
<b>Application Note:</b>	Useful in Sandwich ELISA for Quantitative Detection of Antigen. Aliquot 0.1ml per well of the 1000pg/ml, 500pg/ml, 250pg/ml, 125pg/ml, 62.5pg/ml, 31.3pg/ml, 15.6pg/ml mouse CCL19 standard solutions into the pre-coated 96-well plate. Add 0.1ml of the sample diluent buffer into the control well (Zero well). Add 0.1ml of each properly diluted sample of mouse cell culture supernates, serum or plasma(heparin, EDTA) to each empty well. We recommend that each mouse CCL19 standard solution and each sample is measured in duplicate.
<b>Assay Dilutions:</b>	All assays should be optimized by the user. Recommended dilutions (if any) may be listed below.
<b>Other:</b>	DOE: 2-8° C - 09/25/2021 -20° C - 03/25/2022

## Formulation

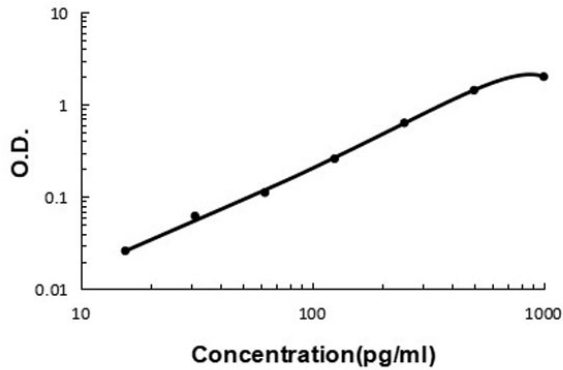
<b>Concentration:</b>	1 Kit
<b>Anticoagulant:</b>	Heparin Sodium

## Shipping & Handling

<b>Shipping Condition:</b>	Wet Ice
<b>Storage Condition:</b>	Store vials at 4°C prior to opening. Centrifuge product if not completely clear after standing at room temperature. This product is stable for 6 months at 4°C as an undiluted liquid. Dilute only prior to immediate use. For extended storage freeze at -20°C or below for 12 months. Avoid cycles of freezing and thawing.
<b>Expiration:</b>	See kit insert for complete instructions.

## Images

### Mouse CCL19 ELISA Kit



### ELISA

Mouse CCL19 ELISA Kit standard curve.

## Disclaimer

This product is for research use only and is not intended for therapeutic or diagnostic applications. Please contact a technical service representative for more information. All products of animal origin manufactured by Rockland Immunochemicals are derived from starting materials of North American origin. Collection was performed in United States Department of Agriculture (USDA) inspected facilities and all materials have been inspected and certified to be free of disease and suitable for exportation. All properties listed are typical characteristics and are not specifications. All suggestions and data are offered in good faith but without guarantee as conditions and methods of use of our products are beyond our control. All claims must be made within 30 days following the date of delivery. The prospective user must determine the suitability of our materials before adopting them on a commercial scale. Suggested uses of our products are not recommendations to use our products in violation of any patent or as a license under any patent of Rockland Immunochemicals, Inc. If you require a commercial license to use this material and do not have one, then return this material, unopened to: Rockland Inc., P.O. BOX 5199, Limerick, Pennsylvania, USA.