



SZABO SCANDIC

Part of Europa Biosite

Produktinformation



Forschungsprodukte & Biochemikalien



Zellkultur & Verbrauchsmaterial



Diagnostik & molekulare Diagnostik



Laborgeräte & Service

Weitere Information auf den folgenden Seiten!
See the following pages for more information!



Lieferung & Zahlungsart

siehe unsere [Liefer- und Versandbedingungen](#)

Zuschläge

- Mindermengenzuschlag
- Trockeneiszuschlag
- Gefahrgutzuschlag
- Expressversand

SZABO-SCANDIC HandelsgmbH

Quellenstraße 110, A-1100 Wien

T. +43(0)1 489 3961-0

F. +43(0)1 489 3961-7

mail@szabo-scandic.com

www.szabo-scandic.com

[linkedin.com/company/szaboscandic](https://www.linkedin.com/company/szaboscandic) 

Datasheet for KOA0272

Human MMP-8 ELISA Kit**Overview**

Description:	Human MMP-8 AccuSignal ELISA Kit - KOA0272
Item No.:	KOA0272
Size:	1 Kit
Applications:	ELISA
Reactivity:	Human
Range:	156 pg/ml - 10000 pg/ml

Product Details

Background:	Matrix metalloproteinase 8(MMP8) also called neutrophil collagenase. Neutrophil collagenase, a member of the family of matrix metalloproteinases, is distinct from the collagenase of skin fibroblasts and synovial cells in substrate specificity and immunologic cross reactivity. MMP8, an enzyme that degrades fibrillar collagens imparting strength to the fetal membranes, is expressed by leukocytes and chorionic cytotrophoblast cells. The human neutrophil collagenase (HNC) cDNA clone has been sequenced and shown to encode a 467-residue protein. Neutrophil collagenase has been found to possess 57% identity with the deduced protein sequence for fibroblast collagenase with 72% chemical similarity. Certain regions of the molecule, including the putative zinc-binding region, are highly conserved. When compared with the published sequence for fibroblast collagenase, neutrophil collagenase contains four additional sites for glycosylation. The standard product used in this kit is natural, isolating from human MMP-8. The detected MMP-8 includes zymogen and active enzyme.
Synonyms:	BB138268, CLG 1, CLG1, Collagenase 1, Collagenase 1 neutrophil, HNC, Matrix metalloproteinase 8, Matrix metalloproteinase 8 (neutrophil collagenase), Matrix metalloproteinase-8, MMP 8, MMP-8, Mmp8, MMP8_HUMAN, Neutrophil collagenase, PMNL CL, PMNL collagenase, PMNL-CL
Detection Kit Type:	ELISA Kit
Detection Range:	156 pg/ml - 10000 pg/ml
Sensitivity:	<10 pg/ml

Target Details**Gene Name:** MMP8

Reactivity:	Human
Immunogen:	Expression system for standard: E.coli; Immunogen sequence: F21-G467
Purity/Specificity:	Natural and recombinant human total MMP-8. There is no detectable cross-reactivity with other relevant proteins.
Relevant Links:	<ul style="list-style-type: none">• UniProtKB - P22894• NCBI - NP_001291370.1• GeneID - 4317• KOA0272 Protocol

Application Details

Tested Applications:	ELISA
Application Note:	Useful in Sandwich ELISA for Quantitative Detection of Antigen. Aliquot 0.1ml per well of the 10000pg/ml, 5000pg/ml, 2500pg/ml, 1250pg/ml, 625pg/ml, 312pg/ml, 156pg/ml human MMP-8 standard solutions into the precoated 96-well plate. Add 0.1ml of the sample diluent buffer into the control well (Zero well). Add 0.1ml of each properly diluted sample of human cell culture supernates, serum, plasma (heparin) or saliva to each empty well. It is recommended that each human MMP-8 standard solution and each sample be measured in duplicate.
Assay Dilutions:	All assays should be optimized by the user. Recommended dilutions (if any) may be listed below.

Formulation

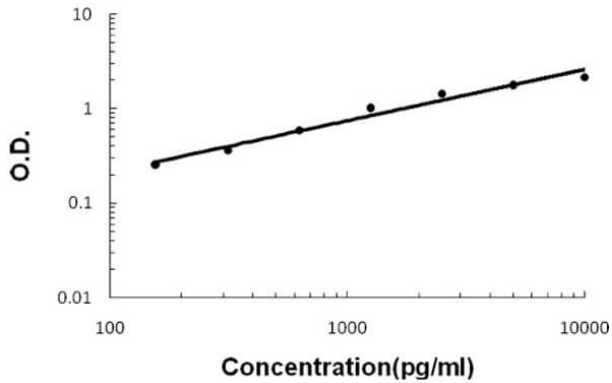
Anticoagulant:	Heparin Sodium
-----------------------	----------------

Shipping & Handling

Shipping Condition:	Wet Ice
Storage Condition:	Store vials at 4°C prior to opening. Centrifuge product if not completely clear after standing at room temperature. This product is stable for 6 months at 4°C as an undiluted liquid. Dilute only prior to immediate use. For extended storage freeze at -20°C or below for 12 months. Avoid cycles of freezing and thawing.
Expiration:	See kit insert for complete instructions.

Images

Human MMP-8 ELISA Kit



ELISA

Human MMP-8 AccuSignal ELISA Kit standard curve. Assay Range: 156pg/ml-10000pg/ml. Sensitivity: <10pg/ml.

Disclaimer

This product is for research use only and is not intended for therapeutic or diagnostic applications. Please contact a technical service representative for more information. All products of animal origin manufactured by Rockland Immunochemicals are derived from starting materials of North American origin. Collection was performed in United States Department of Agriculture (USDA) inspected facilities and all materials have been inspected and certified to be free of disease and suitable for exportation. All properties listed are typical characteristics and are not specifications. All suggestions and data are offered in good faith but without guarantee as conditions and methods of use of our products are beyond our control. All claims must be made within 30 days following the date of delivery. The prospective user must determine the suitability of our materials before adopting them on a commercial scale. Suggested uses of our products are not recommendations to use our products in violation of any patent or as a license under any patent of Rockland Immunochemicals, Inc. If you require a commercial license to use this material and do not have one, then return this material, unopened to: Rockland Inc., P.O. BOX 5199, Limerick, Pennsylvania, USA.