



# SZABO SCANDIC

Part of Europa Biosite

## Produktinformation



Forschungsprodukte & Biochemikalien



Zellkultur & Verbrauchsmaterial



Diagnostik & molekulare Diagnostik



Laborgeräte & Service

Weitere Information auf den folgenden Seiten!  
See the following pages for more information!



### Lieferung & Zahlungsart

siehe unsere [Liefer- und Versandbedingungen](#)

### Zuschläge

- Mindermengenzuschlag
- Trockeneiszuschlag
- Gefahrgutzuschlag
- Expressversand

### SZABO-SCANDIC HandelsgmbH

Quellenstraße 110, A-1100 Wien

T. +43(0)1 489 3961-0

F. +43(0)1 489 3961-7

[mail@szabo-scandic.com](mailto:mail@szabo-scandic.com)

[www.szabo-scandic.com](http://www.szabo-scandic.com)

[linkedin.com/company/szaboscandic](https://www.linkedin.com/company/szaboscandic) 

## Datasheet for MB-104-0500

# DNA (Lambda Phage)

### Overview

<b>Description:</b>	DNA (Lambda Phage) E.coli W8850 (lambda C1857S7) - MB-104-0500
<b>Item No.:</b>	MB-104-0500
<b>Size:</b>	500 µg

### Product Details

<b>Background:</b>	Lambda phage consists of a virus particle including a head (also known as a capsid), a tail, and tail fibers. The head contains the phage's double-stranded circular DNA genome. The phage particle recognizes and binds to its host, E. coli, causing DNA in the head of the phage to be ejected through the tail into the cytoplasm of the bacterial cell. Lambda phage DNA is commonly used as a DNA molecular weight marker. Digestion of the Lambda phage genome with HindIII produces a set of 8 fragments consisting of 125, 560, 2000, 2300, 4300, 9400, and 23000 base pairs.
<b>Synonyms:</b>	Deoxyribonucleic Acid, DNA Lambda Phage
<b>Reagent Type:</b>	DNA

### Target Details

<b>Purity/Specificity:</b>	DNA Lambda Phage is purified by CsCl centrifugation to an A260/A280 $\geq 1.8$ , and is homogeneous in agarose gel electrophoresis. The DNA solution is in 10 mM Tris-HCl pH 8.0 with 1 mM EDTA.
----------------------------	--

### Application Details

<b>Application Note:</b>	Purified Lambda phage DNA is in a solution in 10 mM Tris-Cl and 1 mM EDTA, pH 8.0. This product may be used for to perform activity assays for restriction enzymes, the preparation of DNA molecular weight standards, and other cloning procedures.
<b>Assay Dilutions:</b>	All assays should be optimized by the user. Recommended dilutions (if any) may be listed below.

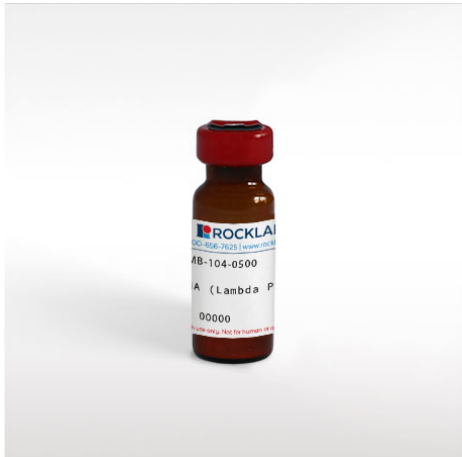
### Formulation

<b>Physical State:</b>	Liquid (sterile filtered)
<b>Concentration:</b>	800 µg/mL by UV absorbance at 280 nm
<b>Buffer:</b>	See application note.
<b>Stabilizer:</b>	None

## Shipping & Handling

<b>Shipping Condition:</b>	Dry Ice
<b>Storage Condition:</b>	Store DNA Lambda Phage at -20° C or colder.
<b>Expiration:</b>	Expiration date is six (6) months from date of receipt.

## Images



### Bottle

DNA (Lambda Phage) E.coli W8850 (lambda C1857S7)

## Disclaimer

This product is for research use only and is not intended for therapeutic or diagnostic applications. Please contact a technical service representative for more information. All products of animal origin manufactured by Rockland Immunochemicals are derived from starting materials of North American origin. Collection was performed in United States Department of Agriculture (USDA) inspected facilities and all materials have been inspected and certified to be free of disease and suitable for exportation. All properties listed are typical characteristics and are not specifications. All suggestions and data are offered in good faith but without guarantee as conditions and methods of use of our products are beyond our control. All claims must be made within 30 days following the date of delivery. The prospective user must determine the suitability of our materials before adopting them on a commercial scale. Suggested uses of our products are not recommendations to use our products in violation of any patent or as a license under any patent of Rockland Immunochemicals, Inc. If you require a commercial license to use this material and do not have one, then return this material, unopened to: Rockland Inc., P.O. BOX 5199, Limerick, Pennsylvania, USA.

[www.rockland.com](http://www.rockland.com)  
[tech@rockland.com](mailto:tech@rockland.com)  
+1 484.791.3823